



**Water Monitoring Result at WSD9 - Tai Wan  
Mid-Flood Tide**

Date	Time	Weather Condition	Sampling Depth		Water Temperature			pH			Salinity			DO Saturation			DO			Turbidity			Suspended Solids	
			m		°C		-		ppt		%		mg/L		NTU		mg/L							
					Value	Average	Value	Average	Value	Average	Value	Average	Value	Average	Value	Average	Value	Average						
28/3/2014	17:35	Cloudy	Middle	3.5	20.60	20.60	20.65	8.09	8.09	8.10	32.51	32.51	32.52	87.0	87.4	87.5	6.46	6.49	6.49	4.24	4.30	4.29	2	3.00
	17:37		Middle	3.5	20.70	20.70		8.10	8.10		32.52	32.52		87.9	87.7		6.52	6.50		6.49	4.30		4.30	
31/3/2014	18:32	Cloudy	Middle	2.5	20.10	20.10	20.10	8.10	8.10	8.10	33.40	33.39	33.39	70.0	69.9	70.0	5.22	5.21	5.22	3.29	3.31	3.25	7	6.00
	18:33		Middle	2.5	20.10	20.10		8.10	8.10		33.39	33.39		70.1	69.9		5.23	5.21		5.22	3.26		3.13	
2/4/2014	19:25	Cloudy	Middle	2.0	20.80	20.80	20.80	7.84	7.84	7.85	32.85	32.91	32.87	67.0	67.7	67.8	5.15	5.10	5.10	4.09	4.10	4.07	4	4.00
	19:26		Middle	2.0	20.80	20.80		7.85	7.85		32.85	32.85		68.6	67.9		5.09	5.04		5.10	4.06		4.02	
4/4/2014	19:35	Cloudy	Middle	2.0	20.40	20.40	20.40	7.78	7.78	7.79	34.33	34.32	34.29	64.8	67.4	66.5	5.00	5.08	5.10	3.28	3.30	3.26	2	3.00
	19:36		Middle	2.0	20.40	20.40		7.79	7.79		34.26	34.26		66.9	66.9		5.15	5.15		5.10	3.26		3.21	
7/4/2014	4:55	Cloudy	Middle	2.5	21.00	21.00	21.00	7.95	7.95	7.95	34.38	34.38	34.39	77.4	77.9	76.4	6.02	6.00	5.89	1.04	1.03	1.06	5	4.50
	4:56		Middle	2.5	21.00	21.00		7.95	7.95		34.40	34.40		75.3	74.9		5.74	5.79		5.89	1.10		1.07	
9/4/2014	7:30	Fine	Middle	3.0	20.00	20.00	20.00	8.28	8.28	8.28	32.01	32.01	32.01	59.0	59.1	59.1	4.44	4.45	4.45	3.38	3.33	3.33	3	3.00
	7:32		Middle	3.0	20.00	20.00		8.28	8.28		32.01	32.01		59.1	59.0		4.45	4.44		4.45	3.31		3.31	
11/4/2014	17:25	Fine	Middle	2.5	21.60	21.60	21.75	8.24	8.24	8.25	32.57	32.57	32.58	85.9	86.5	86.0	6.21	6.29	6.24	2.87	2.90	2.88	2	2.00
	17:27		Middle	2.5	21.90	21.90		8.26	8.26		32.59	32.59		86.1	85.6		6.25	6.21		6.24	2.90		2.86	
14/4/2014	18:25	Cloudy	Middle	3.0	21.10	21.10	21.15	8.36	8.36	8.35	32.36	32.36	32.37	83.0	83.0	83.0	6.10	6.10	6.11	6.11	6.09	6.08	4	4.00
	18:27		Middle	3.0	21.20	21.20		8.33	8.33		32.37	32.37		82.9	83.2		6.10	6.12		6.11	6.06		6.05	
16/4/2014	18:22	Cloudy	Middle	2.5	23.00	23.20	23.13	7.99	7.99	7.99	32.40	32.40	32.40	79.8	79.9	79.9	5.67	5.68	5.68	3.90	3.24	3.43	7	7.00
	18:23		Middle	2.5	23.20	23.10		7.99	7.99		32.40	32.40		80.0	80.0		5.69	5.69		5.68	3.26		3.30	
18/4/2014	21:30	Fine	Middle	2.5	23.90	23.90	23.95	8.27	8.27	8.28	31.69	31.69	31.69	84.6	84.2	84.2	5.94	5.91	5.91	1.85	1.83	1.84	5	4.50
	21:31		Middle	2.5	24.00	24.00		8.28	8.28		31.69	31.69		84.0	84.1		5.90	5.90		5.91	1.86		1.80	
22/4/2014	9:30	Fine	Middle	2.5	23.30	23.30	23.40	7.83	7.83	7.83	35.57	35.57	35.60	80.8	80.6	80.4	5.59	5.59	5.57	3.18	3.20	3.24	4	4.50
	9:32		Middle	2.5	23.50	23.50		7.83	7.83		35.62	35.62		80.3	79.7		5.56	5.52		5.57	3.29		3.29	
24/4/2014	11:15	Fine	Middle	2.5	22.40	22.40	22.40	8.16	8.16	8.15	35.94	35.94	35.95	83.3	85.9	85.5	5.87	6.06	6.03	2.06	2.04	2.02	5	5.00
	11:17		Middle	2.5	22.40	22.40		8.13	8.13		35.95	35.95		86.5	86.4		5.87	6.09		6.03	2.00		1.99	
26/4/2014	18:34	Cloudy	Middle	3.5	22.90	22.90	22.90	8.27	8.27	8.27	35.78	35.78	35.79	76.1	75.5	76.0	5.31	5.28	5.31	3.03	3.06	3.07	5	4.00
	18:36		Middle	3.5	22.90	22.90		8.27	8.27		35.80	35.80		76.4	76.1		5.33	5.31		5.31	3.08		3.11	

Remarks:

Single underline denotes exceedance over Action Level.

Double underline denotes exceedance over Limit Level.

Due to the Amber Rainstorm signal was hoisted on 31 March 2014, water quality monitoring at ebb tide were cancelled



**Water Monitoring Result at WSD17 - Quarry Bay  
Mid-Flood Tide**

Date	Time	Weather Condition	Sampling Depth		Water Temperature			pH			Salinity			DO Saturation			DO			Turbidity			Suspended Solids	
			m		°C		Average	-		Average	ppt		Average	%		mg/L		NTU		mg/L				
					Value	Value		Value	Value		Value	Value		Value	Value	Value	Value	Value	Value	Value	Value	Value	Value	
28/3/2014	15:45	Cloudy	Middle	2.5	19.30	19.30	19.30	8.04	8.04	8.04	32.70	32.70	32.69	88.6	88.5	88.3	6.72	6.70	6.68	6.91	6.85	6.79	4	4.50
	15:47		Middle	2.5	19.30	19.30		8.04	8.04		32.67	32.67		88.2	88.0		6.66	6.65		6.77	6.61		5	
31/3/2014	20:10	Cloudy	Middle	3.5	20.80	20.80	20.85	8.05	8.05	8.05	32.21	32.78	32.84	68.6	69.0	69.5	4.95	5.06	5.07	4.21	4.11	4.14	9	8.50
	20:11		Middle	3.5	20.90	20.90		8.05	8.05		33.19	33.19		70.2	70.0		5.13	5.15		4.16	4.06		8	
2/4/2014	20:30	Cloudy	Middle	3.5	20.60	20.60	20.65	7.97	7.97	7.98	34.13	34.13	34.59	68.2	68.0	67.7	5.00	4.97	4.95	5.56	5.59	5.53	4	4.50
	20:31		Middle	3.5	20.70	20.70		7.99	7.99		35.04	35.04		67.4	67.2		4.92	4.92		5.50	5.48		5	
4/4/2014	20:30	Cloudy	Middle	3.0	20.10	20.10	20.10	7.93	7.93	7.93	34.57	34.57	34.72	68.9	68.9	69.1	5.18	5.18	5.19	6.32	6.23	6.26	6	5.50
	20:31		Middle	3.0	20.10	20.10		7.93	7.93		34.86	34.86		69.4	69.0		5.19	5.19		6.29	6.20		5	
7/4/2014	7:00	Cloudy	Middle	3.5	21.00	21.00	21.00	8.18	8.18	8.18	34.56	34.56	34.43	70.4	72.6	72.4	5.13	5.29	5.28	2.44	2.77	2.38	3	4.00
	7:01		Middle	3.5	21.00	21.00		8.18	8.18		34.30	34.30		73.8	72.8		5.39	5.31		2.25	2.07		5	
9/4/2014	8:55	Fine	Middle	3.0	20.40	20.40	20.60	8.32	8.32	8.33	32.58	32.58	32.58	88.0	88.5	87.6	6.51	6.54	6.48	4.30	4.30	4.31	2	2.50
	8:57		Middle	3.0	20.80	20.80		8.34	8.34		32.58	32.58		87.5	86.3		6.47	6.38		4.31	4.31		3	
11/4/2014	15:00	Fine	Middle	2.5	22.00	22.00	22.05	8.19	8.19	8.21	32.51	32.51	32.50	87.7	86.8	86.7	6.34	6.28	6.27	2.61	2.60	2.60	4	4.00
	15:02		Middle	2.5	22.10	22.10		8.23	8.23		32.49	32.49		86.0	86.1		6.22	6.22		2.59	2.59		4	
14/4/2014	15:05	Cloudy	Middle	3.0	21.40	21.40	21.45	8.22	8.22	8.24	32.50	32.50	32.50	83.9	84.2	83.8	6.13	6.16	6.12	3.31	3.40	3.31	6	6.00
	15:07		Middle	3.0	21.50	21.50		8.26	8.26		32.49	32.49		83.6	83.4		6.11	6.09		3.23	3.29		6	
16/4/2014	19:42	Cloudy	Middle	3.5	23.00	23.00	23.00	8.25	8.25	8.26	33.00	33.00	33.00	83.2	84.9	84.5	5.90	6.02	5.99	4.89	4.96	4.68	8	7.00
	19:43		Middle	3.5	23.00	23.00		8.27	8.27		33.00	33.00		85.1	84.9		6.03	6.02		4.41	4.44		6	
18/4/2014	18:40	Fine	Middle	3.0	24.50	24.50	24.55	8.28	8.28	8.28	31.70	31.70	31.70	73.1	73.5	73.5	5.08	5.11	5.11	2.37	2.43	2.39	4	4.50
	18:41		Middle	3.0	24.60	24.60		8.28	8.28		31.70	31.70		73.9	73.6		5.14	5.12		2.41	2.34		5	
22/4/2014	10:35	Fine	Middle	2.5	23.20	23.20	23.25	8.16	8.16	8.16	35.34	35.34	35.42	89.5	88.3	88.3	6.22	6.14	6.12	1.79	1.79	1.79	5	5.00
	10:37		Middle	2.5	23.30	23.30		8.16	8.16		35.50	35.50		88.0	87.3		6.11	6.01		1.78	1.79		5	
24/4/2014	15:15	Fine	Middle	3.0	22.50	22.50	22.50	8.24	8.24	8.25	35.96	35.96	35.96	85.4	85.3	84.7	6.00	6.00	5.82	2.41	2.42	2.39	4	4.00
	15:17		Middle	3.0	22.50	22.50		8.26	8.26		35.96	35.96		85.4	82.8		6.01	5.28		2.40	2.31		4	
26/4/2014	16:41	Cloudy	Middle	3.0	22.80	22.80	22.85	8.18	8.18	8.18	36.01	36.01	36.01	81.1	82.4	81.3	5.66	5.76	5.68	5.94	5.81	5.74	8	8.00
	16:43		Middle	3.0	22.90	22.90		8.18	8.18		36.00	36.00		81.8	80.0		5.71	5.57		5.60	5.59		8	

Remarks:

Single underline denotes exceedance over Action Level.

Double underline denotes exceedance over Limit Level.

Due to the Amber Rainstorm signal was hoisted on 31 March 2014, water quality monitoring at ebb tide were cancelled



**Water Monitoring Result at C7 - Windsor House  
Mid-Flood Tide**

Date	Time	Weather Condition	Sampling Depth		Water Temperature			pH			Salinity		DO Saturation		DO		Turbidity			Suspended Solids				
					°C			-			ppt		%		mg/L		NTU			mg/L				
					Value	Average		Value	Average		Value	Average	Value	Average	Value	Average	Value	Average	Value	Average	Value	Average		
28/3/2014	15:12	Cloudy	Middle	1.5	20.70	20.70	20.75	8.02	8.02	8.02	31.69	31.69	31.69	60.7	60.6	60.8	4.32	4.50	4.47	3.12	3.12	3.12	2	2.50
	15:14		Middle	1.5	20.80	20.80		8.01	8.01		31.69	31.69		60.8	61.0		4.52	4.53		3.12	3.12		3	
31/3/2014	19:25	Cloudy	Middle	1.5	20.00	20.00	20.05	8.09	8.09	8.09	30.17	30.16	30.60	51.9	52.6	52.6	3.95	4.00	4.00	2.16	1.97	1.99	3	3.00
	19:26		Middle	1.5	20.10	20.10		8.08	8.08		31.03	31.03		53.0	53.0		4.03	4.03		1.93	1.90		3	
2/4/2014	20:05	Cloudy	Middle	1.5	20.60	20.70	20.68	8.04	8.04	8.04	34.16	34.16	34.18	53.2	53.0	51.8	4.48	4.47	4.36	1.39	1.41	1.57	<2	<2
	20:06		Middle	1.5	20.70	20.70		8.04	8.04		34.20	34.20		50.4	50.6		4.24	4.25		1.82	1.66		<2	
4/4/2014	20:00	Cloudy	Middle	1.0	20.30	20.30	20.30	7.71	7.71	7.71	32.56	32.49	32.58	53.2	54.2	54.0	4.38	4.42	4.49	1.73	1.81	1.77	<2	<2
	20:01		Middle	1.0	20.30	20.30		7.71	7.72		32.63	32.63		54.5	54.1		4.63	4.53		1.79	1.76		<2	
7/4/2014	6:31	Cloudy	Middle	1.5	20.80	20.80	20.80	8.15	8.15	8.13	33.40	33.40	33.24	47.5	47.8	47.6	3.60	3.61	3.60	1.14	1.06	1.12	<2	<2
	6:32		Middle	1.5	20.80	20.80		8.11	8.11		33.08	33.08		47.6	47.4		3.60	3.58		1.12	1.16		<2	
9/4/2014	10:42	Fine	Middle	1.5	20.90	20.90	20.95	8.18	8.18	8.18	31.30	31.30	31.30	57.4	57.4	57.6	4.27	4.26	4.28	1.97	1.96	1.95	2	2.50
	10:44		Middle	1.5	21.00	21.00		8.18	8.18		31.30	31.30		57.7	57.8		4.29	4.29		1.95	1.91		3	
11/4/2014	14:37	Fine	Middle	1.5	22.10	22.10	22.10	8.15	8.15	8.15	31.56	31.56	31.56	62.1	62.0	62.1	4.51	4.50	4.51	1.79	1.79	1.79	2	2.50
	14:39		Middle	1.5	22.10	22.10		8.14	8.14		31.55	31.55		62.0	62.4		4.50	4.53		1.79	1.78		3	
14/4/2014	16:47	Cloudy	Middle	1.5	21.90	21.90	21.95	8.22	8.22	8.21	30.81	30.81	30.81	62.8	62.9	63.2	4.59	4.61	4.63	2.22	2.20	2.19	4	3.50
	16:49		Middle	1.5	22.00	22.00		8.20	8.20		30.81	30.81		63.2	63.7		4.63	4.67		2.17	2.16		3	
16/4/2014	19:12	Cloudy	Middle	1.5	23.10	23.10	23.10	8.30	8.30	8.29	31.88	31.88	31.88	61.6	62.8	62.2	4.38	4.48	4.43	1.04	1.08	1.09	3	3.00
	19:13		Middle	1.5	23.10	23.10		8.28	8.28		31.88	31.88		62.6	61.8		4.46	4.38		1.14	1.11		3	
18/4/2014	19:32	Fine	Middle	1.0	24.10	24.10	24.15	7.79	7.80	7.81	30.38	30.38	30.38	56.4	56.6	56.8	3.98	3.99	4.00	1.02	1.05	1.05	3	3.00
	19:33		Middle	1.0	24.20	24.20		7.82	7.82		30.38	30.38		57.2	57.0		4.03	4.01		1.04	1.08		3	
22/4/2014	12:27	Fine	Middle	1.5	23.30	23.30	23.35	8.03	8.03	8.03	34.68	34.68	34.68	59.0	58.5	58.8	4.12	4.08	4.11	1.34	1.34	1.35	3	3.00
	12:29		Middle	1.5	23.40	23.40		8.02	8.02		34.69	34.68		58.7	59.0		4.10	4.12		1.35	1.37		3	
24/4/2014	14:52	Fine	Middle	1.5	22.70	22.70	22.75	8.15	8.15	8.15	34.95	34.95	34.95	61.9	62.3	61.3	4.36	4.40	4.33	2.62	2.62	2.62	5	4.50
	14:54		Middle	1.5	22.80	22.80		8.14	8.14		34.94	34.94		61.0	60.1		4.30	4.24		2.61	2.61		4	
26/4/2014	16:11	Cloudy	Middle	1.5	22.90	22.90	22.90	8.13	8.13	8.13	35.13	35.13	35.14	58.5	57.6	57.9	4.10	4.04	4.06	2.91	2.91	2.91	5	6.00
	16:13		Middle	1.5	22.90	22.90		8.13	8.13		35.14	35.14		58.3	57.2		4.09	4.01		2.92	2.91		7	

Remarks:

Single underline denotes exceedance over Action Level.

Double underline denotes exceedance over Limit Level.

Due to the Amber Rainstorm signal was hoisted on 31 March 2014, water quality monitoring at ebb tide were cancelled



**Water Monitoring Result at C1 - HKCEC Extension  
Mid-Flood Tide**

Date	Time	Weather Condition	Sampling Depth		Water Temperature			pH			Salinity			DO Saturation			DO			Turbidity			Suspended Solids	
			m		°C		-		ppt		%		mg/L		NTU		mg/L							
					Value	Average	Value	Average	Value	Average	Value	Average	Value	Average	Value	Average	Value	Average						
28/3/2014	15:56	Cloudy	Middle	2.5	19.10	19.10	19.15	8.16	8.16	8.16	33.09	33.09	33.08	70.1	70.6	70.4	5.32	5.36	5.34	4.16	4.22	4.27	4	4.50
	15:58		Middle	2.5	19.20	19.20		8.15	8.15		33.07	33.07		70.7	70.1		5.37	5.32		4.24	4.45		5	
31/3/2014	18:50	Cloudy	Middle	2.5	19.10	19.10	19.15	8.22	8.22	8.21	31.79	31.79	31.80	79.7	79.6	79.4	6.09	6.08	6.07	4.10	4.06	4.05	4	4.00
	18:52		Middle	2.5	19.20	19.20		8.20	8.20		31.80	31.80		79.2	79.1		6.06	6.06		4.02	4.01		4	
2/4/2014	21:15	Cloudy	Middle	2.5	19.20	19.20	19.20	8.16	8.16	8.16	32.12	32.12	32.13	74.7	74.5	74.4	5.70	5.69	5.69	5.38	5.41	5.36	7	6.50
	21:17		Middle	2.5	19.20	19.20		8.16	8.16		32.14	32.14		74.4	74.1		5.69	5.67		5.35	5.31		6	
4/4/2014	22:01	Cloudy	Middle	2.5	19.40	19.40	19.40	8.16	8.16	8.17	31.87	31.87	31.85	73.8	73.6	73.4	5.63	5.62	5.61	3.01	2.99	2.95	3	4.00
	22:03		Middle	2.5	19.40	19.40		8.17	8.17		31.83	31.83		73.2	73.0		5.60	5.59		2.94	2.87		5	
7/4/2014	10:00	Cloudy	Middle	3.0	19.30	19.30	19.30	8.20	8.20	8.20	33.25	33.25	33.25	84.2	86.6	85.7	6.36	6.51	6.45	1.96	1.96	1.96	5	5.00
	10:02		Middle	3.0	19.30	19.30		8.20	8.20		33.25	33.25		86.7	85.4		6.52	6.41		1.95	1.95		5	
9/4/2014	9:52	Fine	Middle	2.5	20.10	20.10	20.20	8.29	8.29	8.28	33.11	33.11	33.10	71.2	73.5	72.4	5.31	5.48	5.39	2.11	2.11	2.11	3	3.00
	9:54		Middle	2.5	20.30	20.30		8.27	8.27		33.08	33.08		72.2	72.8		5.37	5.41		2.11	2.11		3	
11/4/2014	15:44	Fine	Middle	2.5	21.00	21.00	21.00	8.16	8.16	8.17	32.92	32.92	32.92	68.0	66.7	67.2	5.00	4.90	4.94	1.08	1.08	1.08	3	3.50
	15:46		Middle	2.5	21.00	21.00		8.17	8.17		32.91	32.91		66.8	67.4		4.91	4.96		1.09	1.07		4	
14/4/2014	16:41	Cloudy	Middle	2.5	21.20	21.30	21.23	8.21	8.21	8.22	32.17	32.17	32.19	77.9	77.6	79.1	5.73	5.71	5.82	2.10	2.00	2.02	3	4.00
	16:43		Middle	2.5	21.20	21.20		8.22	8.22		32.20	32.20		80.2	80.6		5.90	5.92		2.00	1.97		5	
16/4/2014	16:56	Cloudy	Middle	2.0	21.50	21.50	21.50	8.29	8.29	8.30	32.86	32.86	32.86	83.7	83.5	83.3	6.10	6.09	6.08	1.69	1.64	1.62	5	5.50
	16:58		Middle	2.0	21.50	21.50		8.31	8.31		32.85	32.85		83.1	82.8		6.07	6.05		1.58	1.55		6	
18/4/2014	18:54	Fine	Middle	2.0	22.70	22.70	22.75	8.31	8.31	8.31	32.24	32.24	32.23	79.1	78.8	78.7	5.65	5.63	5.63	1.30	1.28	1.28	3	3.00
	18:56		Middle	2.0	22.80	22.80		8.31	8.31		32.22	32.22		78.6	78.4		5.62	5.61		1.27	1.25		3	
22/4/2014	10:23	Fine	Middle	3.0	22.70	22.70	22.70	8.24	8.24	8.24	32.96	32.97	32.97	75.5	76.7	75.2	5.37	5.46	5.34	1.52	1.48	1.49	3	3.00
	10:25		Middle	3.0	22.70	22.70		8.24	8.24		32.97	32.96		73.2	75.4		5.21	5.31		1.50	1.46		3	
24/4/2014	13:58	Fine	Middle	3.0	22.20	22.20	22.20	8.25	8.26	8.26	33.38	33.39	33.39	77.8	79.5	78.6	5.56	5.72	5.64	1.69	1.69	1.69	5	5.50
	14:00		Middle	3.0	22.20	22.20		8.25	8.26		33.39	33.38		77.7	79.4		5.58	5.71		1.69	1.69		6	
26/4/2014	15:25	Cloudy	Middle	2.5	22.60	22.60	22.55	8.30	8.26	8.29	33.43	33.43	33.43	62.7	69.2	66.6	4.48	4.96	4.76	4.26	4.27	4.27	6	5.00
	15:27		Middle	2.5	22.50	22.50		8.30	8.29		33.43	33.43		67.2	67.1		4.80	4.80		4.27	4.27		4	

Remarks:  
 Single underline denotes exceedance over Action Level.  
 Double underline denotes exceedance over Limit Level.  
 Due to the Amber Rainstorm signal was hoisted on 31 March 2014, water quality monitoring at ebb tide were cancelled



**Water Monitoring Result at P1 - HKCEC Phase I  
Mid-Flood Tide**

Date	Time	Weather Condition	Sampling Depth		Water Temperature			pH			Salinity			DO Saturation			DO			Turbidity			Suspended Solids	
			m		°C		-		ppt		%		mg/L		NTU		mg/L							
					Value	Average	Value	Average	Value	Average	Value	Average	Value	Average	Value	Average	Value	Average						
28/3/2014	16:27	Cloudy	Middle	2.5	19.40	19.40	19.45	8.12	8.12	8.12	33.18	33.18	33.14	74.2	74.1	74.0	5.60	5.60	5.59	2.81	2.80	2.79	5	4.50
	16:29		Middle	2.5	19.50	19.50		8.12	8.12		33.10	33.10		73.1	74.5		5.52	5.62		2.80	2.74		4	
31/3/2014	19:40	Cloudy	Middle	2.5	19.20	19.20	19.25	8.16	8.16	8.16	31.98	31.98	31.97	75.0	74.8	74.5	5.72	5.71	5.69	3.41	3.38	3.38	4	4.50
	19:42		Middle	2.5	19.30	19.30		8.15	8.15		31.96	31.96		74.3	73.9		5.68	5.66		3.39	3.33		5	
2/4/2014	20:27	Cloudy	Middle	2.5	19.50	19.50	19.55	8.14	8.14	8.14	31.67	31.67	31.68	73.9	73.7	73.6	5.62	5.61	5.61	2.54	2.54	2.50	4	3.50
	20:29		Middle	2.5	19.60	19.60		8.14	8.14		31.69	31.69		73.5	73.4		5.60	5.60		2.48	2.43		3	
4/4/2014	21:16	Cloudy	Middle	2.5	19.90	19.90	19.90	8.12	8.12	8.13	31.57	31.57	31.59	74.6	74.3	74.2	5.64	5.62	5.62	2.11	2.07	2.05	3	3.00
	21:18		Middle	2.5	19.90	19.90		8.13	8.13		31.61	31.61		74.1	73.9		5.61	5.60		2.02	1.98		3	
7/4/2014	10:31	Cloudy	Middle	3.0	19.40	19.40	19.40	8.29	8.29	8.30	33.26	33.26	33.26	79.0	82.2	81.7	5.97	6.21	6.18	1.81	1.81	1.81	3	3.50
	10:32		Middle	3.0	19.40	19.40		8.30	8.30		33.26	33.26		82.9	82.6		6.29	6.24		1.81	1.81		4	
9/4/2014	10:30	Fine	Middle	3.0	20.90	20.90	20.90	8.26	8.26	8.26	33.13	33.12	33.11	74.9	75.2	75.6	5.51	5.53	5.56	1.10	1.10	1.10	4	4.00
	10:32		Middle	3.0	20.90	20.90		8.25	8.25		33.10	33.10		75.7	76.7		5.57	5.64		1.10	1.11		4	
11/4/2014	16:16	Fine	Middle	3.0	21.50	21.50	21.50	8.23	8.23	8.23	33.03	33.03	33.02	75.0	75.6	75.5	5.46	5.51	5.50	0.69	0.73	0.72	3	2.50
	16:18		Middle	3.0	21.50	21.50		8.23	8.23		33.00	33.00		74.6	76.7		5.43	5.58		0.73	0.74		2	
14/4/2014	17:16	Cloudy	Middle	2.5	21.70	21.70	21.70	8.27	8.27	8.28	32.25	32.25	32.26	75.1	75.8	74.6	5.47	5.52	5.44	0.96	0.86	0.89	2	2.00
	17:18		Middle	2.5	21.70	21.70		8.28	8.28		32.27	32.27		74.0	73.5		5.39	5.36		0.86	0.89		2	
16/4/2014	17:38	Cloudy	Middle	2.0	21.70	21.70	21.70	8.35	8.35	8.35	32.86	32.86	32.87	86.7	86.4	86.3	6.30	6.28	6.28	1.17	1.13	1.13	3	3.00
	17:40		Middle	2.0	21.70	21.70		8.35	8.35		32.88	32.88		86.2	85.7		6.27	6.25		1.12	1.08		3	
18/4/2014	18:19	Fine	Middle	2.0	22.30	22.30	22.35	8.34	8.34	8.36	32.28	32.28	32.28	79.7	79.5	78.9	5.74	5.73	5.72	1.43	1.45	1.42	6	5.00
	18:21		Middle	2.0	22.40	22.40		8.38	8.38		32.27	32.27		77.2	79.1		5.71	5.71		1.42	1.36		4	
22/4/2014	10:58	Fine	Middle	3.0	23.10	23.10	23.10	8.25	8.25	8.25	32.88	32.88	32.88	76.9	78.3	78.0	5.45	5.54	5.51	0.96	0.98	0.97	3	3.50
	11:00		Middle	3.0	23.10	23.10		8.25	8.25		32.88	32.88		77.7	78.9		5.50	5.56		0.96	0.98		4	
24/4/2014	14:38	Fine	Middle	3.0	22.60	22.60	22.60	8.31	8.31	8.31	33.43	33.43	33.43	77.6	79.0	78.2	5.53	5.63	5.82	1.17	1.17	1.18	7	7.00
	14:40		Middle	3.0	22.60	22.60		8.31	8.31		33.43	33.43		77.0	79.1		6.49	5.64		1.18	1.18		7	
26/4/2014	15:52	Cloudy	Middle	3.0	23.10	23.10	23.10	8.28	8.28	8.28	33.41	33.41	33.41	62.4	68.1	66.2	4.44	4.81	4.67	3.77	3.70	3.70	6	5.00
	15:54		Middle	3.0	23.10	23.10		8.28	8.28		33.41	33.41		66.7	67.7		4.71	4.71		3.68	3.63		4	

Remarks:

Single underline denotes exceedance over Action Level.

Double underline denotes exceedance over Limit Level.

Due to the Amber Rainstorm signal was hoisted on 31 March 2014, water quality monitoring at ebb tide were cancelled



**Water Monitoring Result at P3 - APA  
Mid-Flood Tide**

Date	Time	Weather Condition	Sampling Depth		Water Temperature			pH			Salinity			DO Saturation			DO			Turbidity			Suspended Solids	
			m		°C		Average	-		Average	ppt		Average	%		mg/L		NTU		mg/L				
					Value	Value		Value	Value		Value	Value		Value	Value	Value	Value	Value	Value	Value	Value	Value		
28/3/2014	16:19	Cloudy	Middle	2.5	19.30	19.30	19.35	8.13	8.13	8.13	33.15	33.15	33.12	69.0	68.9	68.2	5.22	5.21	5.16	1.89	1.84	1.82	5	4.00
	16:21		Middle	2.5	19.40	19.40		8.12	8.12		33.09	33.09		67.9	67.1		5.14	5.07		1.77	1.76		3	
31/3/2014	19:33	Cloudy	Middle	2.5	19.20	19.20	19.20	8.17	8.17	8.17	32.12	32.12	32.13	74.7	74.4	74.3	5.70	5.68	5.67	3.36	3.31	3.30	5	4.50
	19:35		Middle	2.5	19.20	19.20		8.16	8.16		32.13	32.13		74.1	73.9		5.66	5.65		3.29	3.24		4	
2/4/2014	20:44	Cloudy	Middle	2.5	19.30	19.30	19.30	8.15	8.15	8.15	31.94	31.94	31.93	72.6	72.1	72.0	5.54	5.51	5.51	5.86	5.83	5.81	8	7.50
	20:46		Middle	2.5	19.30	19.30		8.15	8.15		31.91	31.91		71.9	71.4		5.50	5.47		5.79	5.77		7	
4/4/2014	21:31	Cloudy	Middle	2.5	19.70	19.70	19.70	8.16	8.16	8.16	31.62	31.62	31.62	72.9	72.7	72.6	6.52	6.51	6.51	2.02	1.96	1.95	4	3.50
	21:33		Middle	2.5	19.70	19.70		8.15	8.15		31.62	31.62		72.5	72.4		6.50	6.50		1.92	1.90		3	
7/4/2014	10:22	Cloudy	Middle	3.0	19.20	19.20	19.20	8.30	8.30	8.30	33.29	33.29	33.29	82.7	84.9	83.4	6.27	6.47	6.33	1.78	1.79	1.78	5	5.00
	10:24		Middle	3.0	19.20	19.20		8.30	8.30		33.29	33.29		81.9	83.9		6.21	6.36		1.77	1.78		5	
9/4/2014	10:20	Fine	Middle	2.5	20.00	20.00	20.05	8.26	8.26	8.26	33.11	33.11	33.10	70.5	70.0	70.9	5.27	5.22	5.29	2.13	2.12	2.12	5	5.00
	10:22		Middle	2.5	20.10	20.10		8.26	8.26		33.09	33.09		71.2	71.7		5.32	5.35		2.12	2.12		5	
11/4/2014	16:07	Fine	Middle	2.5	21.10	21.10	21.10	8.22	8.22	8.23	33.00	33.00	32.99	71.8	71.1	71.2	5.27	5.22	5.23	1.69	1.67	1.65	2	3.00
	16:09		Middle	2.5	21.10	21.10		8.23	8.23		32.98	32.98		71.4	70.6		5.24	5.18		1.63	1.60		4	
14/4/2014	17:06	Cloudy	Middle	2.5	21.40	21.40	21.40	8.28	8.28	8.29	32.21	32.21	32.23	75.1	75.6	75.4	5.50	5.55	5.53	1.26	1.25	1.23	4	3.00
	17:08		Middle	2.5	21.40	21.40		8.29	8.29		32.25	32.25		75.3	75.5		5.52	5.53		1.22	1.20		2	
16/4/2014	17:23	Cloudy	Middle	2.0	21.40	21.40	21.40	8.34	8.34	8.34	32.92	32.92	32.92	85.8	85.5	85.4	6.26	6.24	6.23	1.16	1.15	1.14	3	3.00
	17:25		Middle	2.0	21.40	21.40		8.34	8.34		32.92	32.92		85.2	85.0		6.22	6.21		1.15	1.09		3	
18/4/2014	18:27	Fine	Middle	2.0	22.50	22.50	22.55	8.33	8.33	8.33	32.24	32.24	32.25	80.9	80.7	80.6	5.80	5.79	5.78	1.79	1.73	1.73	3	3.00
	18:29		Middle	2.0	22.60	22.60		8.32	8.32		32.25	32.25		80.4	80.2		5.76	5.75		1.71	1.69		3	
22/4/2014	10:50	Fine	Middle	3.0	22.80	22.80	22.80	8.24	8.24	8.24	32.91	32.91	32.91	76.7	76.0	76.2	5.46	5.40	5.42	0.53	0.53	0.56	3	3.00
	10:52		Middle	3.0	22.80	22.80		8.24	8.24		32.91	32.91		75.9	76.3		5.40	5.43		0.59	0.59		3	
24/4/2014	14:28	Fine	Middle	3.0	22.50	22.50	22.50	8.31	8.31	8.31	33.42	33.42	33.42	74.4	75.1	75.1	5.32	5.37	5.37	1.11	1.11	1.12	6	6.00
	14:30		Middle	3.0	22.50	22.50		8.31	8.31		33.42	33.42		74.9	75.8		5.36	5.42		1.12	1.12		6	
26/4/2014	15:46	Cloudy	Middle	2.5	22.80	22.80	22.78	8.29	8.29	8.29	33.37	33.37	33.37	64.3	61.9	64.1	4.57	4.40	4.55	2.98	2.93	2.93	3	3.50
	15:48		Middle	2.5	22.70	22.80		8.29	8.29		33.37	33.37		64.5	65.5		4.58	4.66		2.95	2.85		4	

Remarks:

Single underline denotes exceedance over Action Level.

Double underline denotes exceedance over Limit Level.

Due to the Amber Rainstorm signal was hoisted on 31 March 2014, water quality monitoring at ebb tide were cancelled



**Water Monitoring Result at P4 - SOC  
Mid-Flood Tide**

Date	Time	Weather Condition	Sampling Depth		Water Temperature			pH			Salinity			DO Saturation			DO			Turbidity			Suspended Solids	
			m		°C		Average	-		Average	ppt		Average	%		mg/L		NTU		mg/L				
					Value	Value		Value	Value		Value	Value		Value	Value	Value	Value	Value	Value	Value	Value	Value		
28/3/2014	16:10	Cloudy	Middle	2.5	19.30	19.30	19.35	8.14	8.14	8.14	33.06	33.06	33.08	69.0	69.5	70.2	5.23	5.26	5.32	3.63	3.61	3.62	5	4.50
	16:12		Middle	2.5	19.40	19.40		8.13	8.13		33.09	33.09		70.8	71.6		5.35	5.42		3.61	3.63		4	
31/3/2014	19:24	Cloudy	Middle	2.5	19.10	19.10	19.15	8.18	8.18	8.18	32.20	32.20	32.20	79.1	78.7	78.6	6.05	6.03	6.03	4.72	4.68	4.67	9	8.50
	19:26		Middle	2.5	19.20	19.20		8.17	8.17		32.20	32.20		78.4	78.1		6.02	6.00		4.65	4.62		8	
2/4/2014	20:55	Cloudy	Middle	2.5	19.40	19.40	19.40	8.15	0.15	6.15	31.79	31.79	31.79	73.1	72.8	72.7	5.57	5.55	5.54	3.36	3.31	3.30	5	4.50
	20:57		Middle	2.5	19.40	19.40		8.15	8.15		31.78	31.78		72.5	72.3		5.53	5.52		3.29	3.24		4	
4/4/2014	21:47	Cloudy	Middle	2.5	20.00	20.00	20.00	8.14	8.14	8.14	31.62	31.62	31.63	76.5	76.3	76.2	5.77	5.76	5.76	1.70	1.64	1.65	2	2.50
	21:49		Middle	2.5	20.00	20.00		8.14	8.14		31.63	31.63		76.2	75.8		5.76	5.74		1.63	1.61		3	
7/4/2014	10:12	Cloudy	Middle	3.0	19.20	19.20	19.20	8.30	8.29	8.30	33.32	33.32	33.32	84.3	86.6	85.4	6.39	6.57	6.47	2.74	2.70	2.72	5	4.50
	10:14		Middle	3.0	19.20	19.20		8.29	8.30		33.32	33.32		86.0	84.5		6.52	6.41		2.73	2.71		4	
9/4/2014	10:10	Fine	Middle	2.5	20.40	20.40	20.45	8.27	8.27	8.27	33.04	33.00	33.01	75.2	73.2	74.2	5.55	5.47	5.51	1.17	1.18	1.19	3	3.00
	10:12		Middle	2.5	20.50	20.50		8.26	8.26		33.00	33.00		74.9	73.6		5.55	5.48		1.18	1.21		3	
11/4/2014	15:57	Fine	Middle	2.5	20.90	20.90	20.95	8.22	8.22	8.22	32.98	32.98	32.97	66.9	67.1	67.4	4.92	4.94	4.96	1.45	1.44	1.35	2	2.50
	15:59		Middle	2.5	21.00	21.00		8.22	8.22		32.95	32.95		67.7	67.7		4.98	4.98		1.25	1.26		3	
14/4/2014	16:56	Cloudy	Middle	2.5	21.30	21.30	21.25	8.29	8.29	8.29	32.34	32.34	32.36	81.2	80.7	80.9	5.96	5.93	5.94	2.24	2.25	2.23	4	3.50
	16:58		Middle	2.5	21.20	21.20		8.29	8.29		32.38	32.38		80.4	81.3		5.90	5.97		2.22	2.21		3	
16/4/2014	17:18	Cloudy	Middle	2.0	21.40	21.40	21.40	8.36	8.36	8.36	32.91	32.91	32.92	88.5	88.3	88.1	6.47	6.46	6.45	1.25	1.21	1.22	3	3.00
	17:20		Middle	2.0	21.40	21.40		8.36	8.36		32.92	32.92		87.9	87.7		6.44	6.43		1.22	1.18		3	
18/4/2014	18:39	Fine	Middle	2.0	22.60	22.60	22.60	8.32	8.32	8.32	32.23	32.23	32.24	81.2	80.9	80.8	5.83	5.81	5.81	1.57	1.54	1.52	3	3.50
	18:41		Middle	2.0	22.60	22.60		8.32	8.32		32.24	32.24		80.8	80.3		5.81	5.78		1.51	1.47		4	
22/4/2014	10:40	Fine	Middle	3.0	22.70	22.70	22.70	8.25	8.25	8.25	32.99	32.99	32.99	71.0	74.9	74.1	5.06	5.34	5.28	1.11	1.10	1.09	4	4.00
	10:42		Middle	3.0	22.70	22.70		8.25	8.25		32.99	32.99		74.9	75.7		5.34	5.39		1.07	1.08		4	
24/4/2014	14:19	Fine	Middle	3.0	22.30	22.30	22.30	8.34	8.34	8.34	33.40	33.40	33.40	78.7	78.8	78.0	5.64	5.64	5.59	1.89	1.90	1.90	3	4.00
	14:21		Middle	3.0	22.30	22.30		8.34	8.34		33.40	33.40		77.4	77.1		5.55	5.53		1.91	1.90		5	
26/4/2014	15:40	Cloudy	Middle	2.5	22.70	22.70	22.70	8.30	8.29	8.29	33.38	33.38	33.38	68.8	67.3	67.6	4.82	4.79	4.79	3.66	3.66	3.66	7	7.00
	15:42		Middle	2.5	22.70	22.70		8.29	8.29		33.38	33.38		65.8	68.4		4.68	4.86		3.66	3.66		7	

Remarks:  
 Single underline denotes exceedance over Action Level.  
 Double underline denotes exceedance over Limit Level.

Due to the Amber Rainstorm signal was hoisted on 31 March 2014, water quality monitoring at ebb tide were cancelled



**Water Monitoring Result at P5 - WCT / RT / IT  
Mid-Flood Tide**

Date	Time	Weather Condition	Sampling Depth		Water Temperature			pH			Salinity			DO Saturation			DO			Turbidity			Suspended Solids	
			m		°C		Average	-		Average	ppt		Average	%		mg/L		NTU		mg/L				
					Value	Value		Value	Value		Value	Value		Value	Value	Value	Value	Value	Value	Value	Value	Value		
28/3/2014	16:06	Cloudy	Middle	2.5	19.40	19.40	19.40	8.15	8.15	8.15	33.08	33.08	33.07	62.1	61.7	62.1	4.70	4.67	4.70	2.75	2.74	2.76	4	3.50
	16:08		Middle	2.5	19.40	19.40		8.14	8.14		33.06	33.06		62.1	62.4		4.70	4.72		2.77	2.78		3	
31/3/2014	19:19	Cloudy	Middle	2.5	19.20	19.20	19.25	8.19	8.19	8.19	31.99	31.99	31.99	80.1	79.9	79.7	6.11	6.10	6.09	3.81	3.77	3.76	6	5.00
	19:21		Middle	2.5	19.30	19.30		8.19	8.19		31.99	31.99		79.5	79.3		6.08	6.07		3.74	3.70		4	
2/4/2014	21:05	Cloudy	Middle	2.5	19.30	19.30	19.30	8.16	8.16	8.16	31.86	31.86	31.88	73.7	73.4	73.3	5.63	5.61	5.60	4.19	4.15	4.15	6	5.00
	21:07		Middle	2.5	19.30	19.30		8.16	8.16		31.90	31.90		73.1	72.8		5.59	5.57		4.13	4.11		4	
4/4/2014	21:54	Cloudy	Middle	2.5	19.60	19.60	19.60	8.15	8.15	8.15	31.68	31.68	31.68	78.6	78.2	78.1	5.97	5.95	5.94	3.02	2.98	2.96	2	3.00
	21:56		Middle	2.5	19.60	19.60		8.15	8.15		31.67	31.67		77.9	77.7		5.93	5.92		2.95	2.90		4	
7/4/2014	10:07	Cloudy	Middle	3.0	19.20	19.20	19.20	8.27	8.27	8.28	33.31	33.31	33.31	85.8	88.7	87.3	6.54	6.72	6.64	2.13	2.15	2.15	6	6.00
	10:09		Middle	3.0	19.20	19.20		8.28	8.28		33.31	33.31		86.1	88.6		6.58	6.72		2.15	2.17		6	
9/4/2014	10:02	Fine	Middle	2.5	20.60	20.60	20.70	8.26	8.26	8.27	33.02	33.02	33.01	77.7	78.8	78.5	5.74	5.82	5.80	1.55	1.55	1.53	3	3.00
	10:04		Middle	2.5	20.80	20.80		8.27	8.27		33.00	33.00		78.4	79.2		5.79	5.84		1.52	1.48		3	
11/4/2014	15:53	Fine	Middle	2.5	21.00	21.00	21.05	8.20	8.20	8.21	32.95	32.95	32.93	72.1	71.5	71.4	5.30	5.25	5.25	1.42	1.52	1.48	4	4.00
	15:55		Middle	2.5	21.10	21.10		8.21	8.21		32.91	32.91		71.3	70.7		5.24	5.19		1.52	1.47		4	
14/4/2014	16:52	Cloudy	Middle	2.5	21.30	21.30	21.30	8.27	8.27	8.28	32.35	32.35	32.36	80.9	79.5	79.9	5.93	5.83	5.86	2.14	2.12	2.13	4	3.50
	16:54		Middle	2.5	21.30	21.30		8.28	8.28		32.36	32.36		79.5	79.6		5.83	5.84		2.12	2.12		3	
16/4/2014	17:10	Cloudy	Middle	2.0	21.40	21.40	21.40	8.35	8.35	8.36	32.91	32.91	32.91	89.3	89.1	88.9	6.52	6.51	6.50	2.56	2.52	2.51	3	3.00
	17:12		Middle	2.0	21.40	21.40		8.36	8.36		32.91	32.91		88.7	88.4		6.49	6.47		2.49	2.47		3	
18/4/2014	18:47	Fine	Middle	2.0	22.70	22.70	22.75	8.32	8.32	8.32	32.23	32.23	32.23	83.6	83.4	83.2	5.99	5.98	5.97	5.49	5.45	5.43	8	7.50
	18:49		Middle	2.0	22.80	22.80		8.31	8.31		32.23	32.23		83.0	82.8		5.96	5.95		5.41	5.38		7	
22/4/2014	10:35	Fine	Middle	3.0	22.80	22.80	22.80	8.23	8.23	8.23	332.99	32.98	107.99	76.8	79.1	77.2	5.46	5.62	5.49	0.80	0.80	0.80	3	3.00
	10:37		Middle	3.0	22.80	22.80		8.23	8.23		32.98	32.99		75.5	77.4		5.37	5.51		0.80	0.80		3	
24/4/2014	14:13	Fine	Middle	3.0	22.20	22.20	22.20	8.32	8.33	8.33	33.39	33.39	33.39	79.3	79.4	79.9	5.69	5.70	5.74	1.64	1.63	1.63	4	4.00
	14:15		Middle	3.0	22.20	22.20		8.32	8.33		33.39	33.39		80.1	80.9		5.74	5.81		1.63	1.62		4	
26/4/2014	15:37	Cloudy	Middle	2.5	22.80	22.80	22.80	8.29	8.28	8.29	33.36	33.36	33.36	66.6	68.4	67.1	4.73	4.86	4.77	2.38	2.38	2.38	8	7.50
	15:39		Middle	2.5	22.80	22.80		8.29	8.29		33.36	33.36		66.6	66.8		4.73	4.74		2.38	2.37		7	

Remarks:  
Single underline denotes exceedance over Action Level.  
Double underline denotes exceedance over Limit Level.

Due to the Amber Rainstorm signal was hoisted on 31 March 2014, water quality monitoring at ebb tide were cancelled





**Water Monitoring Result at RW21-P789 - Sun Hung Kai Centre  
Mid-Flood Tide**

Date	Time	Weather Condition	Sampling Depth		Water Temperature			pH			Salinity			DO Saturation			DO			Turbidity			Suspended Solids	
			m		°C		Average	-		Average	ppt		Average	%		mg/L		NTU		mg/L				
					Value	Value		Value	Value		Value	Value		Value	Value	Value	Value	Value	Value	Value	Value	Value	Value	Value
28/3/2014	14:30	Cloudy	Middle	3.0	19.90	19.90	20.05	8.07	8.07	8.08	32.29	32.29	32.30	82.1	81.8	81.3	6.15	6.13	6.09	2.40	2.39	2.40	4	3.50
	14:32		Middle	3.0	20.20	20.20		8.08	8.08		32.31	32.31		81.0	80.4		6.07	6.02		2.39	2.40		3	
31/3/2014	20:50	Cloudy	Middle	3.5	21.30	21.30	21.30	7.95	7.95	7.95	31.64	31.64	31.64	68.9	71.2	69.8	5.02	5.13	5.06	2.90	2.88	2.91	4	4.00
	20:51		Middle	3.5	21.30	21.30		7.95	7.95		31.64	31.64		70.3	68.6		5.11	4.99		2.92	2.94		4	
2/4/2014	21:15	Cloudy	Middle	3.5	20.40	20.40	20.40	7.92	7.92	7.92	34.20	34.69	34.38	61.1	65.2	64.5	4.78	5.10	5.04	6.44	6.06	6.41	4	4.00
	21:16		Middle	3.5	20.40	20.40		7.92	7.92		34.31	34.31		66.3	65.3		5.18	5.10		6.63	6.50		4	
4/4/2014	21:13	Cloudy	Middle	3.0	20.40	20.40	20.45	7.97	7.97	7.97	33.24	33.24	33.25	70.5	70.6	70.5	5.23	5.25	5.23	4.33	4.36	4.35	4	3.50
	21:14		Middle	3.0	20.50	20.50		7.97	7.97		33.22	33.29		70.7	70.2		5.23	5.21		4.38	4.31		3	
7/4/2014	7:40	Cloudy	Middle	3.5	20.90	20.90	20.90	7.85	7.85	7.86	34.94	34.94	34.81	65.8	66.4	66.1	4.81	4.83	4.81	1.49	1.17	1.34	3	3.00
	7:41		Middle	3.5	20.90	20.90		7.86	7.86		34.67	34.67		66.0	66.0		4.79	4.79		1.31	1.39		3	
9/4/2014	10:05	Fine	Middle	3.5	21.10	21.10	21.20	8.25	8.25	8.26	32.01	32.01	32.01	81.1	80.6	81.3	5.97	5.94	5.99	2.61	2.50	2.51	3	2.50
	10:07		Middle	3.5	21.30	21.30		8.26	8.26		32.00	32.00		81.5	82.1		6.00	6.04		2.44	2.49		2	
11/4/2014	14:00	Fine	Middle	3.5	22.20	22.20	22.30	8.25	8.25	8.25	32.09	32.09	32.09	83.0	82.3	82.3	5.98	5.94	5.93	2.41	2.31	2.33	4	3.00
	14:02		Middle	3.5	22.40	22.40		8.25	8.25		32.08	32.08		81.7	82.0		5.89	5.91		2.30	2.28		2	
14/4/2014	16:25	Cloudy	Middle	3.5	21.50	21.50	21.50	8.24	8.24	8.25	31.44	31.44	31.44	78.7	80.3	80.4	5.78	5.90	5.91	3.91	3.98	3.89	3	3.00
	16:27		Middle	3.5	21.50	21.50		8.25	8.25		31.44	31.44		81.1	81.6		5.96	5.99		3.92	3.73		3	
16/4/2014	20:30	Cloudy	Middle	3.5	23.00	23.00	23.05	8.27	8.27	8.27	32.41	32.41	32.41	74.5	76.3	75.4	5.29	5.42	5.36	2.85	2.59	2.62	3	4.00
	20:31		Middle	3.5	23.10	23.10		8.27	8.27		32.40	32.40		75.6	75.2		5.37	5.34		2.56	2.47		5	
18/4/2014	18:56	Fine	Middle	3.0	24.30	24.30	24.30	8.30	8.30	8.30	31.26	31.26	31.26	71.6	73.7	73.0	5.03	5.15	5.11	2.67	2.60	2.56	5	5.00
	18:57		Middle	3.0	24.30	24.30		8.30	8.30		31.25	31.25		73.7	73.1		5.16	5.11		2.51	2.45		5	
22/4/2014	11:55	Fine	Middle	4.0	23.40	23.40	23.45	8.14	8.14	6.14	35.28	35.28	35.29	83.1	82.9	82.7	5.77	5.75	5.74	1.60	1.61	1.63	4	3.50
	11:57		Middle	4.0	23.50	23.50		8.14	0.14		35.29	35.29		82.4	82.2		5.72	5.71		1.63	1.66		3	
24/4/2014	14:15	Fine	Middle	3.5	22.50	22.50	22.50	8.17	8.17	8.17	35.74	35.74	35.74	79.6	81.0	79.9	5.61	5.77	5.66	3.78	3.73	3.74	4	4.00
	14:17		Middle	3.5	22.50	22.50		8.17	8.17		35.74	35.74		78.6	80.5		5.57	5.67		3.73	3.73		4	
26/4/2014	15:17	Cloudy	Middle	3.0	22.80	22.80	22.80	8.18	8.18	8.18	35.60	35.60	35.60	80.1	79.0	77.9	5.82	5.77	5.68	3.43	3.43	3.36	10	10.00
	15:19		Middle	3.0	22.80	22.80		8.18	8.18		35.60	35.60		76.5	75.8		5.58	5.53		3.34	3.25		10	

Remarks:  
Single underline denotes exceedance over Action Level.  
Double underline denotes exceedance over Limit Level.

Due to the Amber Rainstorm signal was hoisted on 31 March 2014, water quality monitoring at ebb tide were cancelled



**Water Monitoring Result at WSD19 - Sheung Wan  
Mid-Flood Tide**

Date	Time	Weather Condition	Sampling Depth		Water Temperature			pH			Salinity			DO Saturation			DO			Turbidity			Suspended Solids	
			m		°C		Average	-		Average	ppt		Average	%		mg/L		NTU		mg/L				
					Value	Average		Value	Average		Value	Average		Value	Average	Value	Average	Value	Average	Value	Average			
28/3/2014	14:05	Cloudy	Middle	3.0	20.70	20.70	20.80	8.08	8.08	8.08	32.24	32.24	32.23	77.9	78.2	78.4	5.78	5.80	5.81	10.04	10.01	<b>10.10</b>	8	7.50
	14:07		Middle	3.0	20.90	20.90		8.08	8.08		32.22	32.22		78.8	78.8		5.84	5.83		10.07	10.26		7	
31/3/2014	21:35	Cloudy	Middle	2.5	20.90	20.90	20.90	7.90	7.90	7.91	31.99	31.99	31.89	63.7	67.7	65.4	4.89	5.32	5.04	5.67	5.64	5.63	6	6.50
	21:36		Middle	2.5	20.90	20.90		7.91	7.91		31.78	31.78		63.8	66.4		4.89	5.04		5.62	5.57		7	
2/4/2014	21:55	Cloudy	Middle	2.5	20.70	20.70	20.70	8.06	8.06	8.06	33.97	33.97	33.65	62.8	62.5	62.3	4.64	4.63	4.63	6.61	6.46	6.54	5	5.50
	21:56		Middle	2.5	20.70	20.70		8.05	8.05		33.17	33.48		62.1	61.8		4.66	4.58		6.53	6.55		6	
4/4/2014	22:35	Cloudy	Middle	2.5	20.70	20.70	20.70	7.90	7.90	7.90	33.60	33.60	33.60	73.3	73.4	72.9	5.41	5.42	5.38	5.24	5.04	5.02	5	4.50
	22:36		Middle	2.5	20.70	20.70		7.90	7.90		33.60	33.60		73.1	71.6		5.44	5.26		4.86	4.92		4	
7/4/2014	5:56	Cloudy	Middle	2.5	20.90	20.90	20.90	8.03	8.03	8.04	34.39	34.39	34.39	65.2	65.0	64.8	4.73	4.74	4.71	1.38	1.42	1.44	5	5.00
	5:57		Middle	2.5	20.90	20.90		8.04	8.04		34.39	34.39		65.1	63.8		4.74	4.64		1.47	1.49		5	
9/4/2014	9:45	Fine	Middle	3.0	21.30	21.30	21.40	8.20	8.20	8.21	32.00	32.00	32.01	83.1	83.0	82.5	6.10	6.09	6.05	2.76	2.75	2.75	4	3.00
	9:47		Middle	3.0	21.50	21.50		8.21	8.21		32.01	32.01		82.2	81.7		6.03	5.99		2.75	2.75		2	
11/4/2014	13:35	Fine	Middle	3.0	22.60	22.60	22.85	8.32	8.32	8.31	32.33	32.33	32.32	87.8	86.7	86.3	6.27	6.18	6.15	3.47	3.60	3.58	3	3.00
	13:37		Middle	3.0	23.10	23.10		8.30	8.30		32.30	32.30		85.3	85.3		6.08	6.07		3.62	3.64		3	
14/4/2014	15:35	Cloudy	Middle	3.0	22.30	22.30	22.30	8.26	8.26	8.26	31.44	31.44	31.44	83.8	84.9	84.2	6.07	6.14	6.09	3.74	3.67	3.68	5	5.00
	15:37		Middle	3.0	22.30	22.30		8.26	8.26		31.44	31.44		83.7	84.4		6.06	6.10		3.66	3.66		5	
16/4/2014	21:20	Cloudy	Middle	2.5	23.00	23.00	23.00	8.19	8.19	8.20	32.19	32.19	32.20	77.6	78.9	78.6	5.52	5.62	5.59	3.91	4.07	4.06	6	6.50
	21:21		Middle	2.5	23.00	23.00		8.20	8.20		32.20	32.20		79.3	78.5		5.64	5.59		4.17	4.09		7	
18/4/2014	20:00	Fine	Middle	2.0	24.30	24.30	24.30	8.28	8.28	8.28	31.50	31.50	31.50	72.7	73.1	72.8	5.07	5.10	5.08	4.28	4.25	4.06	5	6.00
	20:01		Middle	2.0	24.30	24.30		8.28	8.28		31.50	31.50		72.9	72.5		5.09	5.04		3.91	3.79		7	
22/4/2014	11:30	Fine	Middle	3.5	24.00	24.00	24.00	8.12	8.12	8.12	35.12	35.12	35.26	87.2	87.5	86.3	6.00	6.02	5.94	3.11	3.19	3.18	3	3.00
	11:32		Middle	3.5	24.00	24.00		8.12	8.12		35.40	35.40		86.0	84.6		5.92	5.82		3.24	3.18		3	
24/4/2014	13:45	Fine	Middle	3.0	22.50	22.50	22.50	8.21	8.21	8.22	35.40	35.40	35.53	76.2	76.5	76.3	5.37	5.39	5.38	4.35	4.38	4.45	5	5.00
	13:47		Middle	3.0	22.50	22.50		8.22	8.22		35.66	35.66		76.6	75.8		5.40	5.34		4.48	4.59		5	
26/4/2014	14:28	Cloudy	Middle	3.5	23.10	23.10	23.15	8.24	8.24	8.23	35.80	35.80	35.77	70.2	70.0	70.1	4.89	4.88	4.88	3.28	3.26	3.24	9	9.00
	14:30		Middle	3.5	23.20	23.20		8.22	8.22		35.75	35.74		70.3	69.8		4.89	4.86		3.21	3.21		9	

Remarks:

Single underline denotes exceedance over Action Level.

Double underline denotes exceedance over Limit Level.

Due to the Amber Rainstorm signal was hoisted on 31 March 2014, water quality monitoring at ebb tide were cancelled



**Water Monitoring Result at WSD9 - Tai Wan  
Mid-Ebb Tide**

Date	Time	Weather Condition	Sampling Depth		Water Temperature			pH			Salinity			DO Saturation			DO			Turbidity			Suspended Solids	
					°C			-			ppt			%			mg/L			mg/L				
			m	Value	Average	Value	Average	Value	Average	Value	Average	Value	Average	Value	Average	Value	Average	Value	Average	Value	Average	Value	Average	
28/3/2014	9:15	Cloudy	Middle	3.0	19.90	19.90	19.90	8.21	8.21	8.21	32.62	32.62	32.65	91.3	90.7	90.4	6.85	6.80	6.78	2.30	2.49	2.40	6	6.50
	9:17		Middle	3.0	19.90	19.90		8.21	8.21		32.67	32.67		90.3	89.4		6.76	6.71		2.44	2.37		7	
31/3/2014	-	Amber Rainstorm	Middle	-	-	-	-	-	-	-	-	-	-	-	-	-	-	-	-	-	-	-	-	
	-		Middle	-	-	-	-	-	-	-	-	-	-	-	-	-	-	-	-	-	-	-	-	
2/4/2014	11:30	Cloudy	Middle	3.0	19.00	19.00	19.00	8.12	8.12	8.13	31.85	31.85	31.87	83.9	81.5	82.5	6.45	6.26	6.34	4.79	4.79	4.79	3	3.00
	11:32		Middle	3.0	19.00	19.00		8.13	8.13		31.88	31.88		82.1	82.5		6.30	6.34		4.78	4.79		3	
4/4/2014	17:04	Fine	Middle	2.5	20.30	20.30	20.30	8.17	8.17	8.18	31.46	31.46	31.47	84.4	84.7	84.7	6.34	6.36	6.36	1.52	1.51	1.52	3	2.50
	17:06		Middle	2.5	20.30	20.30		8.18	8.18		31.47	31.47		84.9	84.9		6.37	6.37		1.51	1.52		2	
7/4/2014	18:59	Cloudy	Middle	3.0	20.10	20.10	20.10	8.04	8.04	8.04	31.65	31.65	31.65	60.8	60.9	61.3	4.57	4.57	4.60	2.59	2.60	2.60	3	4.00
	19:01		Middle	3.0	20.10	20.10		8.04	8.04		31.65	31.65		61.7	61.7		4.63	4.63		2.60	2.60		5	
9/4/2014	19:15	Fine	Middle	2.5	22.60	22.60	22.60	8.12	8.12	8.12	35.19	35.19	35.23	76.5	77.7	76.8	5.39	5.47	5.41	1.05	1.10	1.09	3	3.50
	19:16		Middle	2.5	22.60	22.60		8.12	8.12		35.27	35.27		75.7	77.1		5.33	5.43		1.07	1.15		4	
11/4/2014	19:30	Cloudy	Middle	2.5	20.80	20.80	20.85	8.19	8.19	8.20	35.69	35.69	35.63	73.5	73.6	72.3	5.20	5.14	5.07	1.16	1.14	1.11	2	2.00
	19:31		Middle	2.5	20.90	20.90		8.20	8.20		35.57	35.57		71.8	70.2		5.03	4.92		1.06	1.09		2	
14/4/2014	9:20	Cloudy	Middle	3.0	21.70	21.70	21.80	8.30	8.30	8.31	33.11	33.11	33.12	87.5	88.1	87.0	6.33	6.37	6.29	4.01	4.16	4.20	4	3.50
	3:22		Middle	3.0	21.90	21.90		8.31	8.31		33.13	33.13		86.3	85.9		6.24	6.21		4.31	4.31		3	
16/4/2014	15:10	Fine	Middle	2.5	22.00	22.00	22.00	8.28	8.28	8.30	31.70	31.70	31.71	85.7	84.6	84.9	6.24	6.16	6.18	4.03	4.04	4.05	3	3.00
	15:12		Middle	2.5	22.00	22.00		8.31	8.31		31.71	31.71		84.7	84.6		6.17	6.15		4.06	4.07		3	
18/4/2014	13:52	Sunny	Middle	2.0	26.10	26.10	26.15	8.27	8.27	8.27	31.92	31.92	31.92	77.2	77.9	76.9	5.22	5.26	5.20	2.58	2.27	2.27	3	3.50
	13:53		Middle	2.0	26.20	26.20		8.27	8.27		31.92	31.92		76.5	76.0		5.17	5.13		2.07	2.17		4	
22/4/2014	18:30	Fine	Middle	3.0	23.30	23.30	23.35	8.06	8.06	8.07	35.61	35.61	35.61	81.3	82.3	81.8	5.64	5.71	5.66	2.01	2.03	2.03	5	4.50
	18:32		Middle	3.0	23.40	23.40		8.07	8.07		35.60	35.60		82.0	81.5		5.64	5.66		2.04	2.04		4	
24/4/2014	19:25	Cloudy	Middle	2.0	24.10	24.10	24.15	8.25	8.25	8.25	35.25	35.25	35.36	86.8	88.5	86.9	5.95	6.06	5.95	1.85	1.81	1.80	3	3.50
	19:26		Middle	2.0	24.20	24.20		8.25	8.25		35.46	35.46		86.3	85.8		5.91	5.88		1.78	1.76		4	
26/4/2014	8:15	Cloudy	Middle	3.0	22.70	22.70	22.75	8.21	8.21	8.22	35.92	35.92	35.95	87.5	88.1	87.6	6.14	6.19	6.14	2.74	2.85	2.85	5	4.50
	8:17		Middle	3.0	22.80	22.80		8.23	8.23		35.98	35.98		88.1	86.7		6.17	6.06		2.89	2.90		4	

Remarks:

Single underline denotes exceedance over Action Level.

Double underline denotes exceedance over Limit Level.

Due to the Amber Rainstorm signal was hoisted on 31 March 2014, water quality monitoring at ebb tide were cancelled



**Water Monitoring Result at WSD17 - Quarry Bay  
Mid-Ebb Tide**

Date	Time	Weather Condition	Sampling Depth		Water Temperature			pH			Salinity			DO Saturation			DO			Turbidity			Suspended Solids	
					°C			-			ppt			%			mg/L			mg/L				
			Value	Average	Value	Average	Value	Average	Value	Average	Value	Average	Value	Average	Value	Average	Value	Average	Value	Average	Value	Average	Value	Average
28/3/2014	10:40	Cloudy	Middle	3	19.50	19.50	19.55	8.21	8.21	8.21	32.61	32.61	32.61	90.7	90.1	90.1	6.82	6.83	6.81	5.24	5.11	5.14	5	5.00
	10:42		Middle	3	19.60	19.60		8.21	8.21		32.61	32.61		90.2	89.3		6.82	6.75		5.11	5.11		5	
31/3/2014	-	Amber Rainstorm	Middle	-	-	-	-	-	-	-	-	-	-	-	-	-	-	-	-	-	-	-	-	-
	-		Middle	-	-	-	-	-	-	-	-	-	-	-	-	-	-	-	-	-	-	-	-	-
2/4/2014	15:35	Cloudy	Middle	2	18.90	18.90	18.90	8.18	8.18	8.18	31.48	31.48	31.48	80.7	80.7	80.5	6.17	6.17	6.15	4.97	4.98	4.94	6	5.50
	15:37		Middle	2	18.90	18.90		8.18	8.18		31.47	31.47		79.9	80.6		6.12	6.15		4.91	4.90		5	
4/4/2014	15:00	Fine	Middle	2	20.30	20.30	20.40	8.08	8.08	8.10	31.85	31.85	31.85	88.9	88.2	88.3	6.65	6.59	6.60	2.79	2.76	2.76	2	2.50
	15:02		Middle	2	20.50	20.50		8.12	8.12		31.84	31.84		88.0	87.9		6.58	6.56		2.74	2.75		3	
7/4/2014	16:30	Cloudy	Middle	3	19.60	19.60	19.65	8.24	8.24	8.27	32.66	32.66	32.66	90.2	90.0	90.0	6.81	6.79	6.79	5.41	5.54	5.51	3	4.00
	16:32		Middle	3	19.70	19.70		8.29	8.29		32.66	32.66		90.1	89.7		6.80	6.77		5.56	5.54		5	
9/4/2014	20:22	Fine	Middle	4	22.50	22.50	22.50	8.21	8.20	8.20	34.76	34.76	34.76	72.0	71.8	71.1	5.09	5.07	5.02	2.22	2.27	2.18	3	3.50
	20:23		Middle	4	22.50	22.50		8.19	8.19		34.76	34.76		70.2	70.2		4.96	4.96		2.09	2.15		4	
11/4/2014	20:32	Cloudy	Middle	4	21.30	21.30	21.30	8.24	8.24	8.24	34.72	34.72	34.87	71.1	72.1	72.1	4.93	4.99	5.01	2.45	2.43	2.55	4	4.00
	20:33		Middle	4	21.30	21.30		8.24	8.24		35.01	35.01		72.7	72.6		5.04	5.08		2.56	2.77		4	
14/4/2014	10:55	Cloudy	Middle	3	21.50	21.50	21.50	8.33	8.33	8.33	32.11	32.11	32.11	83.5	83.3	83.0	6.11	6.10	6.08	5.22	5.24	5.24	3	3.50
	10:57		Middle	3	21.50	21.50		8.33	8.33		32.11	32.11		82.7	82.5		6.06	6.04		5.26	5.25		4	
16/4/2014	10:40	Fine	Middle	3	22.10	22.10	22.10	8.33	8.33	8.33	33.21	33.21	33.22	87.5	88.2	87.8	6.30	6.34	6.31	4.98	4.90	4.87	6	5.50
	10:42		Middle	3	22.10	22.10		8.33	8.33		33.22	33.22		89.0	86.4		6.40	6.21		4.80	4.79		5	
18/4/2014	16:55	Sunny	Middle	3	24.60	24.60	24.60	8.05	8.05	8.05	30.88	30.88	30.88	69.0	70.7	70.3	4.81	4.93	4.91	2.96	2.77	2.77	3	3.50
	16:56		Middle	3	24.60	24.60		8.05	8.05		30.87	30.87		70.9	70.7		4.95	4.93		2.75	2.58		4	
22/4/2014	17:00	Fine	Middle	3	23.20	23.20	23.30	8.09	8.09	8.11	35.75	35.75	35.75	90.4	90.5	89.3	6.28	6.28	5.95	1.90	1.88	1.89	6	5.50
	17:02		Middle	3	23.40	23.40		8.12	8.12		35.75	35.75		86.0	90.1		5.97	5.25		1.89	1.90		5	
24/4/2014	20:25	Cloudy	Middle	3	23.90	23.90	23.90	8.20	8.20	8.20	34.63	35.63	35.13	81.6	82.1	81.0	5.61	5.64	5.56	3.00	3.29	3.04	6	5.00
	20:26		Middle	3	23.90	23.90		8.20	8.20		34.63	35.63		80.1	80.1		5.50	5.50		2.98	2.89		4	
26/4/2014	9:30	Cloudy	Middle	3	22.70	22.70	22.75	8.28	8.28	8.28	35.97	35.97	29.06	86.2	86.4	73.2	6.04	6.05	5.97	5.38	5.50	5.49	5	5.50
	9:32		Middle	3	22.80	22.80		8.28	8.28		36.03	36.03		36.0	84.1		5.89	5.89		5.55	5.53		6	

Remarks:

Single underline denotes exceedance over Action Level.

Double underline denotes exceedance over Limit Level.

Due to the Amber Rainstorm signal was hoisted on 31 March 2014, water quality monitoring at ebb tide were cancelled



**Water Monitoring Result at C7 - Windsor House  
Mid-Ebb Tide**

Date	Time	Weather Condition	Sampling Depth		Water Temperature			pH			Salinity		DO Saturation		DO		Turbidity		Suspended Solids					
			m		°C		-		ppt		%		mg/L		NTU		mg/L							
					Value	Average	Value	Average	Value	Average	Value	Average	Value	Average	Value	Average	Value	Average						
28/3/2014	12:15	Cloudy	Middle	2	20.20	20.20	20.25	7.94	7.94	7.94	31.87	31.87	31.87	52.6	53.2	53.0	3.96	3.99	3.98	1.09	1.09	1.09	3	3.00
	12:17		Middle	2	20.30	20.30		7.93	7.93		31.86	31.86		53.0	53.2		3.97	3.99		1.08	1.08		3	
31/3/2014	-	Amber Rainstorm	Middle	-	-	-	N/A	-	-	N/A	-	-	N/A	-	-	N/A	-	-	N/A	-	-	N/A	-	N/A
	-		Middle	-	-	-		-	-		-	-		-	-		-	-		-	-		-	
2/4/2014	15:02	Cloudy	Middle	2	19.60	19.60	19.60	8.05	8.05	8.05	29.19	29.19	29.19	61.0	61.4	61.3	4.71	4.74	4.74	2.67	2.67	2.73	<2	<2
	15:04		Middle	2	19.60	19.60		8.05	8.05		29.19	29.19		61.1	61.5		4.74	4.76		2.73	2.84		<2	
4/4/2014	14:40	Fine	Middle	2	21.00	21.00	21.05	8.07	8.07	8.07	30.15	30.15	30.15	60.0	60.8	61.0	4.49	4.54	4.56	1.33	1.31	1.32	6	6.50
	14:42		Middle	2	21.10	21.10		8.07	8.07		30.15	30.15		61.2	61.9		4.57	4.62		1.31	1.31		7	
7/4/2014	16:12	Cloudy	Middle	2	19.70	19.70	19.75	8.21	8.21	8.21	31.70	31.70	31.70	60.3	60.9	60.9	4.57	4.61	4.62	1.43	1.44	1.42	2	2.50
	16:14		Middle	2	19.80	19.80		8.20	8.20		31.70	31.70		61.4	61.1		4.65	4.63		1.42	1.40		3	
9/4/2014	19:48	Fine	Middle	2	22.50	22.50	22.50	7.88	7.88	7.89	34.23	34.23	34.23	49.4	50.5	49.8	3.51	3.59	3.55	1.09	1.18	1.13	3	3.00
	19:49		Middle	2	22.50	22.50		7.89	7.89		34.23	34.23		48.3	50.8		3.48	3.60		1.20	1.06		3	
11/4/2014	20:02	Cloudy	Middle	2	20.60	20.80	20.75	7.87	7.87	7.88	34.22	34.22	34.19	51.8	51.5	51.0	3.66	3.64	3.62	1.14	1.03	1.09	4	3.50
	20:03		Middle	2	20.80	20.80		7.88	7.88		34.15	34.15		50.6	50.0		3.59	3.57		1.08	1.10		3	
14/4/2014	12:25	Cloudy	Middle	2	21.00	21.00	21.00	8.32	8.32	8.32	31.77	31.77	31.77	65.4	65.7	65.8	4.73	4.74	4.76	2.34	2.37	2.36	3	3.00
	12:27		Middle	2	21.00	21.00		8.32	8.32		31.77	31.77		66.0	66.1		4.78	4.78		2.36	2.36		3	
16/4/2014	14:12	Fine	Middle	2	22.10	22.10	22.15	8.25	8.25	8.25	31.11	31.11	31.11	65.7	66.7	66.2	4.79	4.86	4.82	2.65	2.72	2.69	3	3.00
	14:14		Middle	2	22.20	22.20		8.24	8.24		31.11	31.11		66.2	66.0		4.82	4.81		2.73	2.67		3	
18/4/2014	16:27	Sunny	Middle	1	25.00	25.00	25.00	7.83	7.85	7.85	30.65	30.65	30.66	62.3	62.8	62.5	4.32	4.36	4.33	1.19	1.05	1.12	3	3.50
	16:28		Middle	1	25.00	25.00		7.86	7.86		30.67	30.67		62.3	62.4		4.32	4.33		1.16	1.08		4	
22/4/2014	16:27	Fine	Middle	2	23.50	23.50	23.50	8.07	8.07	8.07	34.76	34.76	34.76	65.0	65.4	65.0	4.52	4.55	4.52	1.16	1.16	1.16	6	6.50
	16:29		Middle	2	23.50	23.50		8.06	8.06		34.76	34.76		64.6	64.9		4.49	4.52		1.17	1.15		7	
24/4/2014	19:55	Cloudy	Middle	1	23.90	23.90	23.90	7.95	7.95	7.96	33.84	33.84	33.85	60.5	62.2	61.1	4.18	4.32	4.23	1.03	1.01	1.03	3	3.00
	19:56		Middle	1	23.90	23.90		7.96	7.96		33.86	33.86		60.8	60.7		4.22	4.21		1.00	1.06		3	
26/4/2014	10:49	Cloudy	Middle	2	23.30	23.30	23.30	8.15	8.15	8.15	35.15	35.15	35.15	64.1	65.2	64.0	4.46	4.51	4.45	0.96	0.98	0.98	7	8.00
	10:51		Middle	2	23.30	23.30		8.14	8.14		35.15	35.15		63.5	63.2		4.42	4.40		0.99	0.99		9	

Remarks:

Single underline denotes exceedance over Action Level.

Double underline denotes exceedance over Limit Level.

Due to the Amber Rainstorm signal was hoisted on 31 March 2014, water quality monitoring at ebb tide were cancelled



**Water Monitoring Result at C1 - HKCEC  
Mid-Ebb Tide**

Date	Time	Weather Condition	Sampling Depth		Water Temperature			pH			Salinity			DO Saturation			DO			Turbidity			Suspended Solids	
			m		°C		-			ppt		%		mg/L		NTU			mg/L					
					Value	Average	Value	Average	Value	Average	Value	Average	Value	Average	Value	Average	Value	Average	Value	Average				
28/3/2014	9:44	Cloudy	Middle	2.5	19.30	19.30	19.30	8.25	8.25	8.25	33.34	33.35	33.35	76.1	76.8	76.4	5.74	5.77	5.76	1.27	1.28	1.28	5	5.00
	9:46		Middle	2.5	19.30	19.30		8.25	8.25		33.34	33.35		76.3	76.2		5.76	5.75		1.27	1.28			
31/3/2014	-	Amber Rainstorm	Middle	-	-	-	-	-	-	-	-	-	-	-	-	-	-	-	-	-	-	-	-	-
	-		Middle	-	-	-	-	-	-	-	-	-	-	-	-	-	-	-	-	-	-	-	-	-
2/4/2014	14:16	Cloudy	Middle	2.5	19.30	19.30	19.30	8.12	8.12	8.12	31.78	31.78	31.79	67.4	66.3	66.0	5.15	5.06	5.04	3.37	3.36	3.37	4	3.50
	14:18		Middle	2.5	19.30	19.30		8.12	8.12		31.79	31.79		65.2	65.1		4.98	4.97		3.36	3.39			
4/4/2014	15:52	Fine	Middle	2.5	19.60	19.60	19.60	8.19	8.19	8.19	31.58	31.58	31.59	69.2	68.9	69.0	5.26	5.24	5.25	2.72	2.70	2.70	4	4.50
	15:54		Middle	2.5	19.60	19.60		8.18	8.18		31.60	31.60		69.2	68.8		5.27	5.23		2.69	2.68			
7/4/2014	15:15	Cloudy	Middle	2.0	19.70	19.70	19.70	8.27	8.27	8.28	32.49	32.49	32.49	87.9	87.9	87.8	6.63	6.63	6.62	2.11	2.13	2.13	7	6.00
	15:17		Middle	2.0	19.70	19.70		8.29	8.29		32.49	32.49		87.8	87.6		6.62	6.60		2.14	2.14			
9/4/2014	21:26	Fine	Middle	2.5	20.60	20.60	20.60	8.25	8.25	8.25	32.88	32.88	32.88	79.3	79.1	79.0	5.87	5.86	5.85	1.05	1.02	1.00	4	3.50
	21:28		Middle	2.5	20.60	20.60		8.25	8.25		32.88	32.88		78.8	78.6		5.84	5.83		0.99	0.95			
11/4/2014	22:09	Cloudy	Middle	2.5	20.70	20.70	20.70	8.24	8.24	8.24	33.10	33.10	33.09	76.6	76.5	76.4	5.65	5.65	5.64	1.42	1.39	1.36	3	3.50
	22:11		Middle	2.5	20.70	20.70		8.24	8.24		33.07	33.07		76.3	76.1		5.64	5.63		1.31	1.33			
14/4/2014	10:50	Cloudy	Middle	2.5	21.50	21.50	21.50	8.15	8.15	8.16	32.74	32.74	32.75	82.8	83.0	82.4	6.04	6.05	6.01	1.72	1.73	1.73	3	3.50
	10:52		Middle	2.5	21.50	21.50		8.17	8.17		32.75	32.75		82.1	81.7		5.99	5.96		1.74	1.73			
16/4/2014	10:50	Fine	Middle	2.5	21.40	21.40	21.40	8.22	8.22	8.22	33.62	33.62	33.62	84.0	85.7	84.7	6.11	6.23	6.17	1.70	1.69	1.70	4	3.50
	10:52		Middle	2.5	21.40	21.40		8.22	8.22		33.62	33.62		84.5	84.4		6.18	6.14		1.69	1.70			
18/4/2014	14:39	Sunny	Middle	2.5	23.40	23.40	23.50	8.30	8.30	8.30	32.32	32.32	32.32	88.4	88.2	87.9	6.24	6.23	6.21	2.27	2.26	2.25	4	4.50
	14:41		Middle	2.5	23.60	23.60		8.30	8.30		32.32	32.32		87.7	87.3		6.20	6.18		2.24	2.21			
22/4/2014	15:30	Fine	Middle	2.5	24.00	24.00	24.05	8.11	8.11	8.11	35.55	35.55	35.54	85.0	84.8	84.2	5.83	5.82	5.78	1.88	1.87	1.87	4	3.50
	15:32		Middle	2.5	24.10	24.10		8.11	8.11		35.53	35.53		84.2	82.6		5.78	5.67		1.87	1.87			
24/4/2014	20:55	Cloudy	Middle	2.5	22.40	22.40	22.40	8.34	8.34	8.34	33.53	33.53	33.52	72.3	72.1	71.9	5.16	5.15	5.14	0.99	0.99	0.96	5	5.50
	20:56		Middle	2.5	22.40	22.40		8.33	8.33		33.50	33.50		71.6	71.4		5.12	5.11		0.96	0.90			
26/4/2014	10:12	Cloudy	Middle	2.5	22.60	22.60	22.55	8.23	8.23	8.24	33.50	33.50	33.52	63.2	63.4	63.0	4.50	4.51	4.49	2.02	1.99	1.99	5	5.50
	10:14		Middle	2.5	22.50	22.50		8.24	8.24		33.53	33.53		63.0	62.3		4.49	4.44		1.97	1.96			

Remarks:

Single underline denotes exceedance over Action Level.

Double underline denotes exceedance over Limit Level.

Due to the Amber Rainstorm signal was hoisted on 31 March 2014, water quality monitoring at ebb tide were cancelled



**Water Monitoring Result at P1 - HKCEC Phase I  
Mid-Ebb Tide**

Date	Time	Weather Condition	Sampling Depth		Water Temperature			pH			Salinity			DO Saturation			DO			Turbidity			Suspended Solids	
			m		°C		-			ppt		%		mg/L		NTU		mg/L						
					Value	Average	Value	Average	Value	Average	Value	Average	Value	Average	Value	Average	Value	Average	Value	Average				
28/3/2014	10:16	Cloudy	Middle	2.5	19.90	19.90	19.90	8.11	8.11	8.11	33.24	33.25	33.25	78.1	78.3	78.5	5.85	5.89	5.90	2.55	2.54	2.55	4	5.00
	10:18		Middle	2.5	19.90	19.90		8.11	8.11		33.24	33.25		78.8	78.7		5.93	5.92		2.55	2.54		6	
31/3/2014	-	Amber Rainstorm	Middle	-	-	-	-	-	-	-	-	-	-	-	-	-	-	-	-	-	-	-	-	
	-		Middle	-	-	-	-	-	-	-	-	-	-	-	-	-	-	-	-	-	-	-	-	
2/4/2014	14:35	Cloudy	Middle	2.5	19.20	19.20	19.20	8.16	8.16	8.16	31.87	31.87	31.88	72.5	76.9	73.8	5.53	5.80	5.62	4.67	4.59	4.56	4	4.50
	14:37		Middle	2.5	19.20	19.20		8.16	8.16		31.89	31.89		70.5	75.4		5.39	5.74		4.49	4.49		5	
4/4/2014	16:25	Fine	Middle	2.5	19.80	19.80	19.80	8.19	8.19	8.19	31.62	31.62	31.62	71.3	71.5	70.9	5.40	5.42	5.37	2.26	2.26	2.26	4	3.50
	16:27		Middle	2.5	19.80	19.80		8.19	8.19		31.62	31.62		70.9	70.0		5.36	5.30		2.26	2.26		3	
7/4/2014	15:20	Cloudy	Middle	2.5	19.80	19.80	19.80	8.29	8.29	8.30	32.48	32.48	32.48	88.6	88.9	88.9	6.68	6.70	6.70	2.41	2.40	2.41	4	4.50
	15:22		Middle	2.5	19.80	19.80		8.30	8.30		32.47	32.47		88.9	89.0		6.70	6.71		2.40	2.42		5	
9/4/2014	20:35	Fine	Middle	2.5	21.20	21.20	21.20	8.23	8.23	8.23	32.41	32.41	32.41	72.7	72.5	72.3	5.34	5.33	5.32	3.30	3.26	3.26	2	2.50
	20:37		Middle	2.5	21.20	21.20		8.23	8.23		32.40	32.40		72.2	71.8		5.31	5.29		3.24	3.24		3	
11/4/2014	21:17	Cloudy	Middle	2.5	20.90	20.90	20.95	8.19	8.19	8.21	30.89	30.89	30.93	73.4	73.1	73.0	5.50	5.48	5.47	3.87	3.83	3.82	3	3.00
	21:19		Middle	2.5	21.00	21.00		8.22	8.22		30.96	30.96		72.8	72.5		5.46	5.44		3.80	3.78		3	
14/4/2014	11:27	Cloudy	Middle	3.0	21.30	21.30	21.35	8.25	8.25	8.26	32.54	32.54	32.55	78.4	78.1	78.4	5.74	5.72	5.74	1.84	1.78	1.78	3	3.50
	11:29		Middle	3.0	21.40	21.40		8.27	8.27		32.56	32.56		78.7	78.4		5.76	5.74		1.75	1.75		4	
16/4/2014	11:22	Fine	Middle	3.0	21.20	21.20	21.20	8.34	8.34	8.34	33.62	33.62	33.62	86.2	88.3	87.3	6.29	6.44	6.37	1.56	1.56	1.56	4	4.00
	11:24		Middle	3.0	21.20	21.20		8.34	8.34		33.62	33.62		87.6	87.0		6.39	6.35		1.55	1.55		4	
18/4/2014	13:51	Sunny	Middle	2.5	23.20	23.20	23.25	8.23	8.23	8.27	32.54	32.54	32.55	83.4	83.1	83.0	5.84	5.82	5.82	2.80	2.77	2.75	3	3.00
	13:52		Middle	2.5	23.30	23.30		8.30	8.30		32.56	32.56		82.9	82.5		5.81	5.79		2.73	2.69		3	
22/4/2014	15:06	Fine	Middle	2.5	23.90	23.90	23.90	8.12	8.12	8.12	35.49	35.49	35.49	87.3	86.8	86.5	6.01	5.97	5.95	2.07	2.05	2.13	5	5.00
	15:08		Middle	2.5	23.90	23.90		8.12	8.12		35.49	35.49		86.2	85.7		5.93	5.90		2.14	2.24		5	
24/4/2014	20:04	Cloudy	Middle	2.5	22.20	22.20	22.15	8.33	8.33	8.34	33.51	33.51	33.54	77.7	77.4	77.3	5.57	5.55	5.54	3.47	3.44	3.42	7	7.50
	20:06		Middle	2.5	22.10	22.10		8.34	8.34		33.56	33.56		77.2	77.0		5.53	5.52		3.40	3.38		8	
26/4/2014	10:43	Cloudy	Middle	3.0	22.70	22.70	22.70	8.30	8.30	8.30	33.45	33.45	33.47	67.0	66.6	66.2	4.76	4.73	4.70	2.76	2.77	2.76	5	5.50
	10:45		Middle	3.0	22.70	22.70		8.30	8.30		33.49	33.49		66.9	64.3		4.75	4.57		2.76	2.75		6	

Remarks:

Single underline denotes exceedance over Action Level.

Double underline denotes exceedance over Limit Level.

Due to the Amber Rainstorm signal was hoisted on 31 March 2014, water quality monitoring at ebb tide were cancelled



**Water Monitoring Result at P3 - APA  
Mid-Ebb Tide**

Date	Time	Weather Condition	Sampling Depth		Water Temperature			pH			Salinity			DO Saturation			DO			Turbidity			Suspended Solids	
			m		°C		-			ppt		%		mg/L		NTU		mg/L						
					Value	Average	Value	Average	Value	Average	Value	Average	Value	Average	Value	Average	Value	Average	Value	Average				
28/3/2014	10:08	Cloudy	Middle	2.5	19.30	19.30	19.30	8.14	8.14	8.14	33.26	33.26	33.26	76.3	76.5	76.4	5.76	5.78	5.77	2.67	2.68	2.66	4	4.00
	10:10		Middle	2.5	19.30	19.30		8.14	8.14		33.26	33.26		75.7	77.0		5.71	5.82		2.64	2.63		4	
31/3/2014	-	Amber Rainstorm	Middle	-	-	-	-	-	-	-	-	-	-	-	-	-	-	-	-	-	-	-	-	-
	-		Middle	-	-	-	-	-	-	-	-	-	-	-	-	-	-	-	-	-	-	-	-	-
2/4/2014	14:32	Cloudy	Middle	2.5	19.40	19.40	19.40	8.16	8.16	8.16	31.85	31.85	31.85	73.9	72.9	72.6	5.64	5.54	5.54	4.58	4.58	4.56	4	4.00
	14:34		Middle	2.5	19.40	19.40		8.16	8.16		31.86	31.85		73.0	70.7		5.57	5.39		4.56	4.51		4	
4/4/2014	16:15	Fine	Middle	2.5	19.80	19.80	19.80	8.18	8.18	8.19	31.61	31.61	31.63	74.3	74.7	73.7	5.63	5.66	5.58	2.11	2.14	2.14	3	3.00
	16:17		Middle	2.5	19.80	19.80		8.19	8.19		31.65	31.65		73.4	72.3		5.56	5.48		2.15	2.14		3	
7/4/2014	15:27	Cloudy	Middle	2.5	19.50	19.50	19.50	8.31	8.31	8.31	32.49	32.49	32.49	86.2	86.2	86.2	6.53	6.53	6.53	2.98	2.94	2.94	4	4.50
	15:29		Middle	2.5	19.50	19.50		8.31	8.31		32.49	32.49		86.2	86.3		6.53	6.54		2.92	2.92		5	
9/4/2014	20:53	Fine	Middle	2.5	20.50	20.50	20.55	8.25	8.25	8.25	32.86	32.86	32.86	79.1	78.9	78.8	5.86	5.84	5.83	2.27	2.25	2.23	2	2.50
	20:55		Middle	2.5	20.60	20.60		8.25	8.25		32.86	32.86		78.6	78.4		5.82	5.81		2.21	2.19		3	
11/4/2014	21:31	Cloudy	Middle	2.5	20.50	20.50	20.55	8.24	8.24	8.25	33.17	33.17	33.16	78.3	78.0	78.9	5.83	5.80	5.80	1.55	1.57	1.53	4	4.50
	21:33		Middle	2.5	20.60	20.60		8.25	8.25		33.14	33.14		79.9	79.4		5.80	5.77		1.54	1.46		5	
14/4/2014	11:17	Cloudy	Middle	2.5	21.50	21.50	21.55	8.25	8.25	8.26	32.58	32.58	32.59	78.2	78.9	78.7	5.71	5.76	5.75	1.80	1.81	1.86	3	3.00
	11:19		Middle	2.5	21.60	21.60		8.27	8.27		32.60	32.60		79.9	77.6		5.84	5.67		1.91	1.93		3	
16/4/2014	11:14	Fine	Middle	2.5	21.20	21.20	21.20	8.31	8.31	8.31	33.62	33.62	33.62	88.1	88.6	87.5	6.42	6.43	6.37	1.76	1.75	1.76	3	2.50
	11:16		Middle	2.5	21.20	21.20		8.31	8.31		33.62	33.62		85.4	87.8		6.23	6.41		1.76	1.75		2	
18/4/2014	14:08	Sunny	Middle	2.5	22.90	22.90	23.00	8.31	8.31	8.31	32.51	32.51	32.51	84.1	83.8	83.8	5.97	5.95	5.95	2.54	2.51	2.50	3	3.00
	14:10		Middle	2.5	23.10	23.10		8.31	8.31		32.50	32.50		83.7	83.5		5.95	5.94		2.48	2.46		3	
22/4/2014	15:11	Fine	Middle	2.5	24.00	24.00	24.00	8.13	8.13	8.13	35.47	35.47	35.47	84.3	84.3	84.5	5.79	5.80	5.81	2.90	2.91	2.91	4	3.50
	15:13		Middle	2.5	24.00	24.00		8.12	8.12		35.46	35.46		85.3	84.1		5.86	5.78		2.92	2.92		3	
24/4/2014	20:17	Cloudy	Middle	2.5	22.40	22.40	22.40	8.36	8.36	8.36	33.51	33.51	33.52	75.6	75.4	75.2	5.40	5.39	5.38	2.13	2.11	2.09	4	4.00
	20:19		Middle	2.5	22.40	22.40		8.36	8.36		33.52	33.52		75.1	74.8		5.37	5.35		2.09	2.02		4	
26/4/2014	10:34	Cloudy	Middle	2.5	22.70	22.70	22.70	8.29	8.29	8.30	33.49	33.49	33.50	66.1	66.4	66.6	4.70	4.72	4.73	2.80	2.80	2.80	7	6.00
	10:36		Middle	2.5	22.70	22.70		8.30	8.30		33.50	33.50		67.0	66.8		4.76	4.75		2.80	2.80		5	

Remarks:

Single underline denotes exceedance over Action Level.

Double underline denotes exceedance over Limit Level.

Due to the Amber Rainstorm signal was hoisted on 31 March 2014, water quality monitoring at ebb tide were cancelled





**Water Monitoring Result at P4 - SOC  
Mid-Ebb Tide**

Date	Time	Weather Condition	Sampling Depth		Water Temperature			pH			Salinity			DO Saturation			DO			Turbidity			Suspended Solids	
			m		°C		-			ppt		%		mg/L		NTU		mg/L						
					Value	Average	Value	Average	Value	Average	Value	Average	Value	Average	Value	Average	Value	Average	Value	Average				
28/3/2014	9:56	Cloudy	Middle	2.5	18.90	18.90	18.90	8.17	8.17	6.17	33.37	33.37	33.37	73.1	75.9	75.5	5.56	5.81	5.75	2.26	2.22	2.22	3	4.00
	9:58		Middle	2.5	18.90	18.90		0.17	8.17		33.37	33.37		76.9	76.2		5.85	5.79		2.20	2.21		5	
31/3/2014	-	Amber Rainstorm	Middle	-	-	-	-	-	-	-	-	-	-	-	-	-	-	-	-	-	-	-	-	
	-		Middle	-	-	-	-	-	-	-	-	-	-	-	-	-	-	-	-	-	-	-	-	
2/4/2014	14:28	Cloudy	Middle	2.5	19.10	19.10	19.20	8.14	8.14	8.15	31.78	31.78	31.78	67.0	66.2	66.1	5.11	5.05	5.05	3.24	3.11	3.14	4	3.50
	14:30		Middle	2.5	19.30	19.30		8.15	8.15		31.78	31.78		66.0	65.2		5.04	4.98		3.10	3.09		3	
4/4/2014	16:05	Fine	Middle	2.5	19.70	19.70	19.70	8.18	8.18	8.19	31.59	31.59	31.62	69.5	72.7	71.0	5.27	5.52	5.39	2.26	2.26	2.26	6	5.50
	16:07		Middle	2.5	19.70	19.70		8.19	8.19		31.64	31.64		71.4	70.3		5.42	5.34		2.26	2.25		5	
7/4/2014	15:35	Cloudy	Middle	2.5	19.50	19.50	19.50	8.32	8.32	8.32	32.44	32.44	32.44	86.1	86.3	86.3	6.53	6.54	6.54	2.42	2.43	2.43	4	3.50
	15:37		Middle	2.5	19.50	19.50		8.32	8.32		32.44	32.44		86.3	86.3		6.55	6.54		2.42	2.43		3	
9/4/2014	21:07	Fine	Middle	2.5	21.30	21.30	21.30	8.24	8.24	8.24	32.84	32.84	32.85	81.2	80.8	80.8	5.94	5.92	5.92	2.09	2.04	2.03	5	4.00
	21:09		Middle	2.5	21.30	21.30		8.24	8.24		32.85	32.85		80.7	80.5		5.92	5.91		2.01	1.97		3	
11/4/2014	21:46	Cloudy	Middle	2.5	20.60	20.60	20.60	8.24	8.24	8.24	33.03	33.03	33.04	77.3	77.1	76.8	5.72	5.71	5.69	1.74	1.70	1.70	5	5.00
	21:48		Middle	2.5	20.60	20.60		8.24	8.24		33.04	33.04		76.6	76.3		5.68	5.66		1.69	1.65		5	
14/4/2014	11:07	Cloudy	Middle	2.5	21.40	21.40	21.40	8.25	8.25	8.26	32.66	32.66	32.66	76.4	76.7	74.9	5.58	5.60	5.48	1.38	1.39	1.39	4	3.50
	11:09		Middle	2.5	21.40	21.40		8.26	8.26		32.66	32.66		73.8	72.8		5.40	5.32		1.40	1.40		3	
16/4/2014	11:06	Fine	Middle	2.5	21.20	21.20	21.20	8.32	8.32	8.32	33.60	33.60	33.60	81.2	82.9	82.2	5.91	6.05	5.99	1.60	1.61	1.59	3	3.00
	11:08		Middle	2.5	21.20	21.20		8.32	8.32		33.60	33.60		81.2	83.5		5.92	6.09		1.56	1.57		3	
18/4/2014	14:17	Sunny	Middle	2.5	23.40	23.40	23.55	8.31	8.31	8.31	32.40	32.40	32.38	86.6	86.5	86.2	6.09	6.09	6.07	2.68	2.63	2.60	4	4.00
	14:19		Middle	2.5	23.70	23.70		8.31	8.31		32.36	32.36		86.1	85.7		6.06	6.04		2.57	2.53		4	
22/4/2014	15:15	Fine	Middle	2.5	23.80	23.80	23.85	8.13	8.13	8.14	35.47	35.47	35.47	82.9	82.2	82.4	5.70	5.66	5.67	2.31	2.26	2.28	3	4.00
	15:17		Middle	2.5	23.90	23.90		8.14	8.14		35.47	35.47		82.1	82.3		5.66	5.67		2.26	2.27		5	
24/4/2014	20:34	Cloudy	Middle	2.5	22.40	22.40	22.40	8.35	8.35	8.36	33.57	33.57	33.55	76.2	75.9	75.9	5.45	5.43	5.43	2.37	2.34	2.33	4	4.00
	20:36		Middle	2.5	22.40	22.40		8.36	8.36		33.53	33.53		75.8	75.6		5.43	5.42		2.31	2.29		4	
26/4/2014	10:26	Cloudy	Middle	2.5	22.70	22.70	22.70	8.27	8.27	8.28	33.48	33.51	33.51	65.5	65.0	64.4	4.65	4.62	4.57	1.90	1.87	1.89	6	5.50
	10:28		Middle	2.5	22.70	22.70		8.28	8.28		33.52	33.52		64.1	62.8		4.56	4.46		1.88	1.89		5	

Remarks:

Single underline denotes exceedance over Action Level.

Double underline denotes exceedance over Limit Level.

Due to the Amber Rainstorm signal was hoisted on 31 March 2014, water quality monitoring at ebb tide were cancelled



**Water Monitoring Result at P5 - WCT / RT / IT  
Mid-Ebb Tide**

Date	Time	Weather Condition	Sampling Depth		Water Temperature			pH			Salinity			DO Saturation			DO			Turbidity			Suspended Solids	
			m		°C		-			ppt		%		mg/L		NTU		mg/L						
					Value	Average	Value	Average	Value	Average	Value	Average	Value	Average	Value	Average	Value	Average	Value	Average				
28/3/2014	9:51	Cloudy	Middle	2.5	19.10	19.10	19.10	8.18	8.18	8.18	33.38	33.38	33.38	76.5	77.8	76.8	5.80	5.90	5.82	2.56	2.57	2.57	5	4.50
	9:53		Middle	2.5	19.10	19.10		8.18	8.18		33.38	33.38		76.3	76.6		5.78	5.80		2.58	2.55		4	
31/3/2014	-	Amber Rainstorm	Middle	-	-	-	-	-	-	-	-	-	-	-	-	-	-	-	-	-	-	-	-	
	-		Middle	-	-	-	-	-	-	-	-	-	-	-	-	-	-	-	-	-	-	-	-	
2/4/2014	14:24	Cloudy	Middle	2.5	19.40	19.40	19.40	8.14	8.14	8.14	31.77	31.77	31.77	69.1	68.6	68.0	5.27	5.23	5.19	3.77	3.73	3.72	4	4.00
	14:26		Middle	2.5	19.40	19.40		8.14	8.14		31.77	31.77		67.3	67.0		5.13	5.11		3.70	3.68		4	
4/4/2014	16:01	Fine	Middle	2.5	19.70	19.70	19.60	8.19	8.19	8.19	31.60	31.60	31.61	71.1	70.4	70.6	5.40	5.34	5.35	2.62	2.65	2.66	4	3.50
	16:03		Middle	2.5	19.50	19.50		8.19	8.19		31.62	31.62		71.0	69.8		5.39	5.28		2.67	2.71		3	
7/4/2014	15:43	Cloudy	Middle	2.5	19.50	19.50	19.50	8.33	8.33	8.33	32.45	32.45	32.45	86.9	86.8	86.7	6.58	6.58	6.57	2.61	2.60	2.60	3	3.00
	15:45		Middle	2.5	19.50	19.50		8.33	8.33		32.45	32.45		86.6	86.3		6.56	6.54		2.60	2.59		3	
9/4/2014	21:17	Fine	Middle	2.5	20.80	20.80	20.75	8.25	8.25	8.25	32.88	32.88	32.89	77.4	77.2	74.4	5.70	5.69	5.68	1.96	1.91	1.90	3	3.00
	21:19		Middle	2.5	20.70	20.70		8.25	8.25		32.89	32.89		71.8	71.3		5.67	5.64		1.87	1.84		3	
11/4/2014	21:56	Cloudy	Middle	2.5	20.30	20.30	20.35	8.25	8.25	8.25	33.08	33.08	33.07	76.8	76.5	76.4	5.66	5.64	5.63	1.41	1.39	1.35	2	3.00
	21:58		Middle	2.5	20.40	20.40		8.25	8.25		33.05	33.05		76.2	76.0		5.62	5.61		1.33	1.28		4	
14/4/2014	10:59	Cloudy	Middle	2.5	21.40	21.40	21.40	8.23	8.23	8.24	32.67	32.67	32.67	77.3	78.6	78.1	5.65	5.75	5.71	1.77	1.79	1.82	3	3.00
	11:01		Middle	2.5	21.40	21.40		8.24	8.24		32.67	32.67		78.3	78.1		5.73	5.71		1.84	1.89		3	
16/4/2014	10:59	Fine	Middle	2.5	21.30	21.30	21.30	8.29	8.29	8.29	33.63	33.62	33.63	85.3	86.8	86.0	6.21	6.32	6.26	1.61	1.62	1.62	3	3.00
	11:01		Middle	2.5	21.30	21.30		8.29	8.29		33.62	33.63		85.1	86.6		6.20	6.31		1.60	1.63		3	
18/4/2014	14:25	Sunny	Middle	2.5	23.20	23.20	23.40	8.31	8.31	8.31	32.36	32.36	32.36	84.9	84.6	84.4	6.00	5.58	5.67	2.60	2.56	2.54	4	4.50
	14:27		Middle	2.5	23.60	23.60		8.30	8.30		32.36	32.36		84.2	83.9		5.56	5.53		2.51	2.47		5	
22/4/2014	15:25	Fine	Middle	2.5	23.80	23.80	23.80	8.14	8.14	8.14	35.48	35.48	35.48	82.0	81.9	81.9	5.65	5.64	5.64	2.24	2.24	2.24	3	3.00
	15:27		Middle	2.5	23.80	23.80		8.14	8.14		35.47	35.47		81.9	81.8		5.65	5.63		2.24	2.23		3	
24/4/2014	20:47	Cloudy	Middle	2.5	22.50	22.50	22.50	8.30	8.30	8.30	33.55	33.55	33.55	78.5	78.3	78.1	5.60	5.59	5.58	2.18	2.17	2.15	8	8.00
	20:49		Middle	2.5	22.50	22.50		8.30	8.30		33.55	33.55		77.9	77.7		5.57	5.56		2.14	2.09		8	
26/4/2014	10:21	Cloudy	Middle	2.5	22.70	22.70	22.70	8.26	8.26	8.27	33.51	33.51	33.52	65.5	65.1	64.4	4.65	4.63	4.58	2.45	2.43	2.42	9	9.00
	10:23		Middle	2.5	22.70	22.70		8.27	8.27		33.52	33.52		64.0	63.0		4.55	4.47		2.40	2.39		9	

Remarks:

Single underline denotes exceedance over Action Level.

Double underline denotes exceedance over Limit Level.

Due to the Amber Rainstorm signal was hoisted on 31 March 2014, water quality monitoring at ebb tide were cancelled



**Water Monitoring Result at RW21-P789 - Sun Hung Kai Centre  
Mid-Ebb Tide**

Date	Time	Weather Condition	Sampling Depth		Water Temperature			pH			Salinity			DO Saturation			DO			Turbidity			Suspended Solids	
			m		°C		-			ppt		%		mg/L		NTU		mg/L						
					Value	Average	Value	Average	Value	Average	Value	Average	Value	Average	Value	Average	Value	Average	Value	Average				
28/3/2014	11:45	Cloudy	Middle	3.0	19.90	19.90	19.90	8.06	8.06	8.06	32.28	32.28	32.28	79.2	78.2	78.8	5.95	5.88	5.92	3.67	3.57	3.70	3	3.00
	11:47		Middle	3.0	19.90	19.90		8.06	8.06		32.28	32.28		78.8	79.1		5.92	5.94		3.75	3.79			
31/3/2014	-	Amber Rainstorm	Middle	-	-	-	-	-	-	-	-	-	-	-	-	-	-	-	-	-	-	-	-	
	-		Middle	-	-	-	-	-	-	-	-	-	-	-	-	-	-	-	-	-	-	-	-	
2/4/2014	14:25	Cloudy	Middle	3.5	19.50	19.50	19.50	8.17	8.17	8.17	30.76	30.76	30.76	81.6	81.6	81.5	6.24	6.24	6.24	6.23	6.21	6.22	6	6.00
	14:27		Middle	3.5	19.50	19.50		8.17	8.17		30.76	30.76		81.5	81.3		6.24	6.22		6.21	6.21		6	
4/4/2014	14:05	Fine	Middle	3.5	21.00	21.00	21.05	8.18	8.18	8.18	31.20	31.20	31.20	84.6	84.6	84.2	6.29	6.29	6.26	4.05	4.07	4.07	3	3.50
	14:07		Middle	3.5	21.10	21.10		8.18	8.18		31.20	31.20		84.0	83.7		6.23	6.21		4.09	4.07		4	
7/4/2014	15:35	Cloudy	Middle	3.5	19.60	19.60	19.60	8.33	8.33	8.34	32.48	32.48	32.48	84.8	85.1	85.3	6.41	6.43	6.45	2.66	2.67	2.68	5	5.00
	15:37		Middle	3.5	19.60	19.60		8.34	8.34		32.48	32.48		85.5	85.9		6.46	6.49		2.69	2.71		5	
9/4/2014	21:20	Fine	Middle	3.0	22.50	22.50	22.50	7.95	7.95	7.96	34.97	34.97	34.97	66.5	62.0	61.9	5.86	4.38	4.67	1.07	1.03	1.12	5	4.00
	21:21		Middle	3.0	22.50	22.50		7.96	7.96		34.97	34.97		59.1	60.1		4.18	4.25		1.12	1.25		3	
11/4/2014	21:18	Cloudy	Middle	3.5	21.00	21.00	21.00	8.25	8.25	8.25	35.58	35.58	35.36	69.6	70.0	68.8	4.86	4.89	4.81	2.38	2.31	2.27	3	4.50
	21:19		Middle	3.5	21.00	21.00		8.24	8.24		35.13	35.13		68.1	67.4		4.76	4.71		2.25	2.12		6	
14/4/2014	11:50	Cloudy	Middle	3.5	21.50	21.50	21.50	8.28	8.28	8.28	31.83	31.83	31.83	76.9	78.0	78.1	5.64	5.72	5.72	3.12	3.12	3.13	4	3.50
	11:52		Middle	3.5	21.50	21.50		8.28	8.28		31.83	31.83		78.5	78.9		5.74	5.78		3.14	3.13		3	
16/4/2014	13:35	Fine	Middle	3.5	22.10	22.10	22.10	8.29	8.29	8.30	32.74	32.74	32.74	85.4	85.3	85.1	6.15	6.14	6.12	3.79	3.67	3.65	3	3.50
	13:37		Middle	3.5	22.10	22.10		8.30	8.30		32.74	32.74		84.6	84.9		6.09	6.11		3.56	3.56		4	
18/4/2014	15:30	Sunny	Middle	3.0	25.80	25.80	25.80	8.26	8.26	8.26	31.85	31.85	31.86	75.8	75.7	75.4	5.15	5.14	5.13	1.72	1.20	1.35	5	5.50
	15:31		Middle	3.0	25.80	25.80		8.26	8.26		31.87	31.87		75.4	74.7		5.13	5.08		1.22	1.26		6	
22/4/2014	15:50	Fine	Middle	4.0	23.70	23.70	23.75	8.13	8.13	8.14	35.44	35.44	35.44	84.6	83.4	83.0	5.84	5.76	5.73	2.79	2.62	2.65	2	2.50
	15:52		Middle	4.0	23.80	23.80		8.14	8.14		35.44	35.44		82.8	81.1		5.72	5.60		2.60	2.60		3	
24/4/2014	21:00	Cloudy	Middle	3.0	23.90	23.90	23.90	8.16	8.16	8.17	35.10	35.10	35.10	78.4	76.0	76.3	5.40	5.25	5.26	2.29	2.23	2.19	6	6.00
	21:01		Middle	3.0	23.90	23.90		8.17	8.17		35.10	35.10		76.0	74.9		5.24	5.16		2.12	2.10		6	
26/4/2014	10:25	Cloudy	Middle	3.5	22.80	22.80	22.80	8.20	8.20	8.21	35.84	35.84	35.86	82.2	81.5	81.1	5.75	5.71	5.67	2.31	2.31	2.30	3	4.00
	10:27		Middle	3.5	22.80	22.80		8.21	8.21		35.88	35.88		80.6	80.0		5.63	5.60		2.30	2.29		5	

Remarks:

Single underline denotes exceedance over Action Level.

Double underline denotes exceedance over Limit Level.

Due to the Amber Rainstorm signal was hoisted on 31 March 2014, water quality monitoring at ebb tide were cancelled



**Water Monitoring Result at WSD19 - Sheung Wan  
Mid-Ebb Tide**

Date	Time	Weather Condition	Sampling Depth		Water Temperature			pH			Salinity			DO Saturation			DO			Turbidity			Suspended Solids	
			m		°C		-			ppt		%		mg/L		NTU		mg/L						
					Value	Average	Value	Average	Value	Average	Value	Average	Value	Average	Value	Average	Value	Average	Value	Average				
28/3/2014	11:25	Cloudy	Middle	3.0	20.30	20.30	20.45	8.02	8.02	8.02	32.26	32.26	32.25	77.4	77.5	77.1	5.77	5.77	5.75	13.73	13.74	<u>13.71</u>	7	7.00
	11:27		Middle	3.0	20.60	20.60		8.02	8.02		32.24	32.24		77.3	76.0		5.76	5.70		13.73	13.62		7	
31/3/2014	-	Amber Rainstorm	Middle	-	-	-	-	-	-	-	-	-	-	-	-	-	-	-	-	-	-	-	-	
	-		Middle	-	-	-	-	-	-	-	-	-	-	-	-	-	-	-	-	-	-	-	-	
2/4/2014	13:55	Cloudy	Middle	3.5	20.00	20.00	20.00	8.18	8.18	8.18	30.88	30.88	30.89	82.3	82.9	82.3	6.24	6.28	6.24	12.08	12.07	<u>12.07</u>	7	6.50
	13:57		Middle	3.5	20.00	20.00		8.18	8.18		30.89	30.89		82.3	81.5		6.24	6.18		12.07	12.07		6	
4/4/2014	13:40	Fine	Middle	3.5	21.50	21.50	21.50	8.22	8.22	8.22	31.18	31.18	31.18	84.7	84.7	84.2	6.24	6.23	6.19	7.12	7.20	7.18	3	3.50
	13:42		Middle	3.5	21.50	21.50		8.21	8.21		31.18	31.18		83.8	83.4		6.17	6.13		7.20	7.21		4	
7/4/2014	14:35	Cloudy	Middle	3.5	20.10	20.10	20.15	8.26	8.26	8.26	32.44	32.44	32.45	83.1	84.0	83.9	6.22	6.28	6.28	4.62	4.76	4.76	4	4.50
	14:37		Middle	3.5	20.20	20.20		8.26	8.26		32.45	32.45		84.4	84.1		6.31	6.29		4.83	4.81		5	
9/4/2014	21:48	Fine	Middle	2.0	23.20	23.20	23.20	7.95	7.95	7.95	34.68	34.68	34.49	71.8	75.7	73.3	5.02	5.29	5.14	2.56	2.59	2.45	3	3.00
	21:49		Middle	2.0	23.20	23.20		7.95	7.95		34.30	34.30		74.5	71.2		5.21	5.02		2.36	2.30		3	
11/4/2014	22:49	Cloudy	Middle	2.0	21.00	21.00	21.00	8.23	8.23	8.23	33.43	33.43	33.48	70.5	71.7	71.4	5.44	5.29	5.33	3.84	3.74	3.79	5	4.50
	22:50		Middle	2.0	21.00	21.00		8.23	8.23		33.53	33.53		71.7	71.7		5.29	5.29		3.81	3.77		4	
14/4/2014	11:25	Cloudy	Middle	3.0	21.70	21.70	21.75	8.31	8.31	8.34	31.32	31.32	31.31	84.4	83.1	82.9	6.18	6.09	6.07	3.21	3.21	3.22	3	3.50
	11:27		Middle	3.0	21.80	21.80		8.36	8.36		31.29	31.29		82.1	82.1		6.01	6.01		3.21	3.23		4	
16/4/2014	12:00	Fine	Middle	3.5	22.00	22.00	22.00	8.31	8.31	8.31	32.35	32.35	32.35	77.7	79.0	78.6	5.63	5.72	5.69	4.10	4.09	4.10	6	5.00
	12:02		Middle	3.5	22.00	22.00		8.31	8.31		32.35	32.35		79.1	78.5		5.73	5.69		4.10	4.11		4	
18/4/2014	16:06	Sunny	Middle	2.0	25.60	25.60	25.65	8.31	8.31	8.31	31.00	31.00	31.00	79.5	80.3	79.5	5.44	5.49	5.45	3.91	3.86	3.87	6	6.50
	16:07		Middle	2.0	25.70	25.70		8.31	8.31		31.00	30.99		78.6	79.4		5.44	5.43		3.88	3.84		7	
22/4/2014	14:45	Fine	Middle	3.5	24.50	24.50	24.50	8.09	8.09	8.09	35.15	35.15	35.16	79.2	80.2	79.7	5.38	5.46	5.42	2.30	2.31	2.35	5	5.50
	14:47		Middle	3.5	24.50	24.50		8.09	8.09		35.17	35.17		80.7	78.7		5.49	5.36		2.39	2.40		6	
24/4/2014	21:46	Cloudy	Middle	2.0	23.90	23.90	23.93	8.26	8.26	8.25	34.33	34.33	34.35	77.2	78.3	78.1	5.34	5.41	5.40	2.43	2.15	2.22	5	5.00
	21:47		Middle	2.0	24.00	23.90		8.24	8.24		34.36	34.36		79.2	77.5		5.48	5.36		2.12	2.18		5	
26/4/2014	10:02	Cloudy	Middle	3.0	23.00	23.00	23.00	8.23	8.23	8.24	35.51	35.51	35.55	79.1	77.5	78.1	5.53	5.41	5.45	3.91	3.87	3.87	6	7.00
	10:04		Middle	3.0	23.00	23.00		8.24	8.24		35.59	35.59		78.7	76.9		5.50	5.37		3.84	3.84		8	

Remarks:

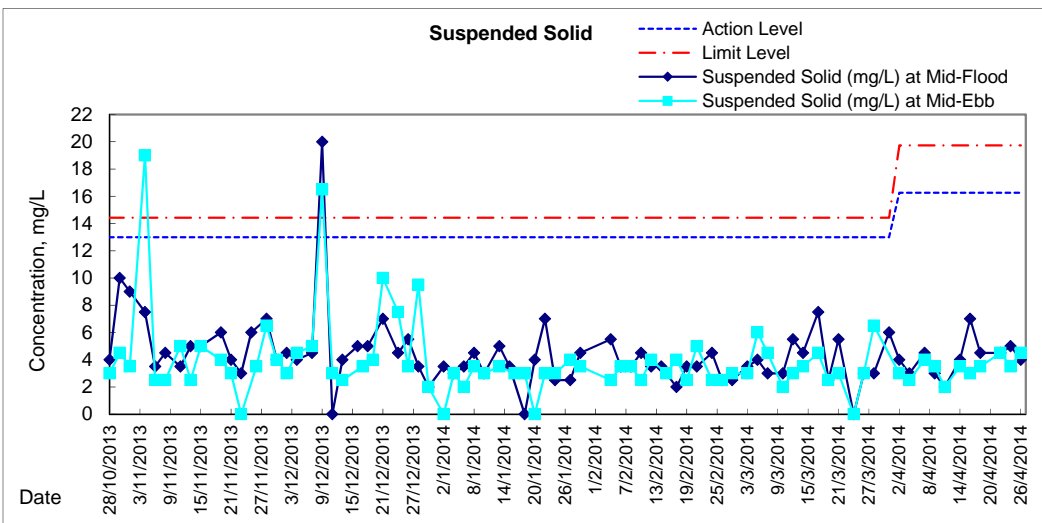
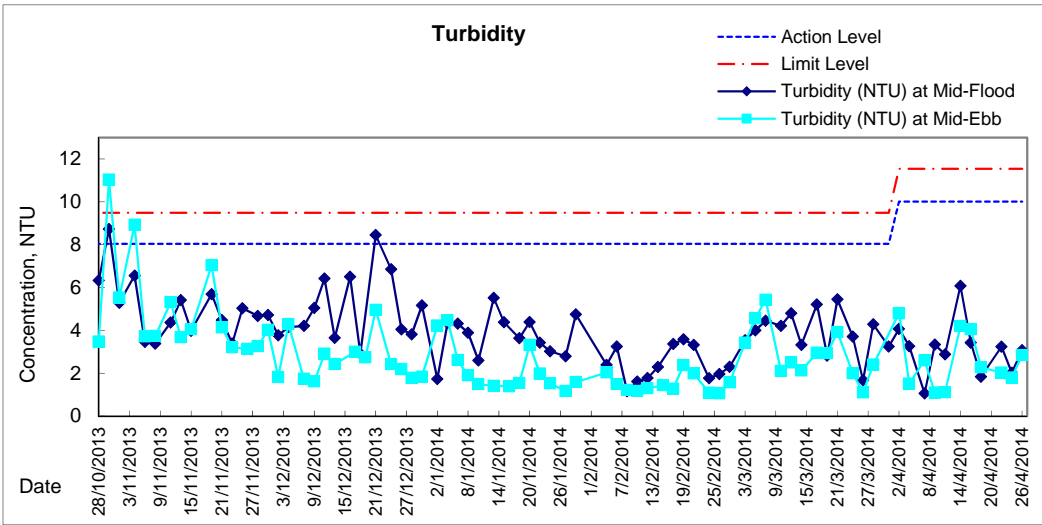
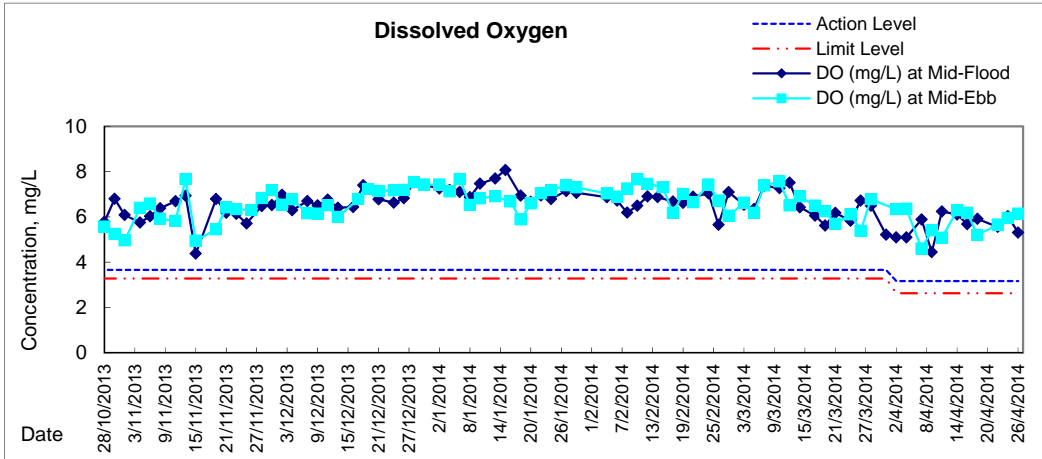
Single underline denotes exceedance over Action Level.

Double underline denotes exceedance over Limit Level.

Due to the Amber Rainstorm signal was hoisted on 31 March 2014, water quality monitoring at ebb tide were cancelled

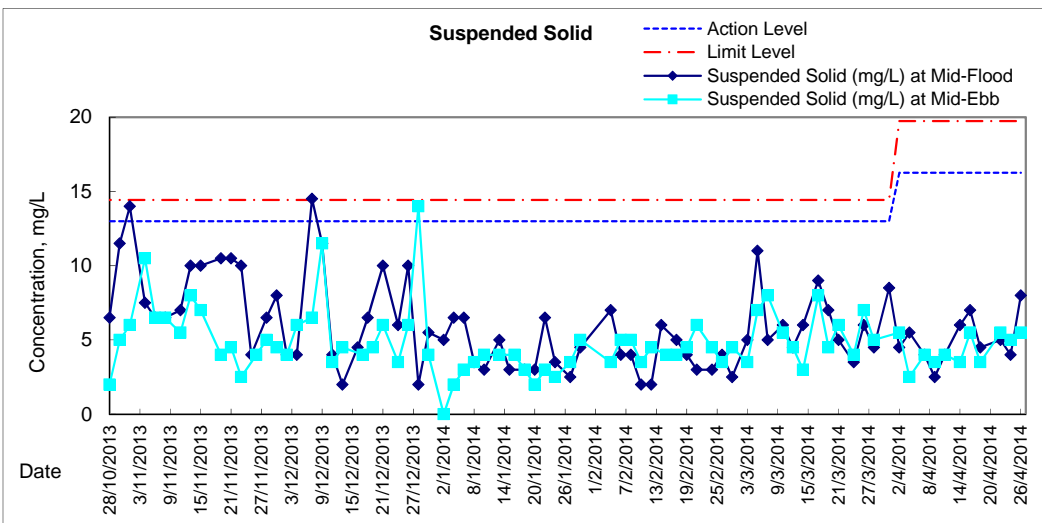
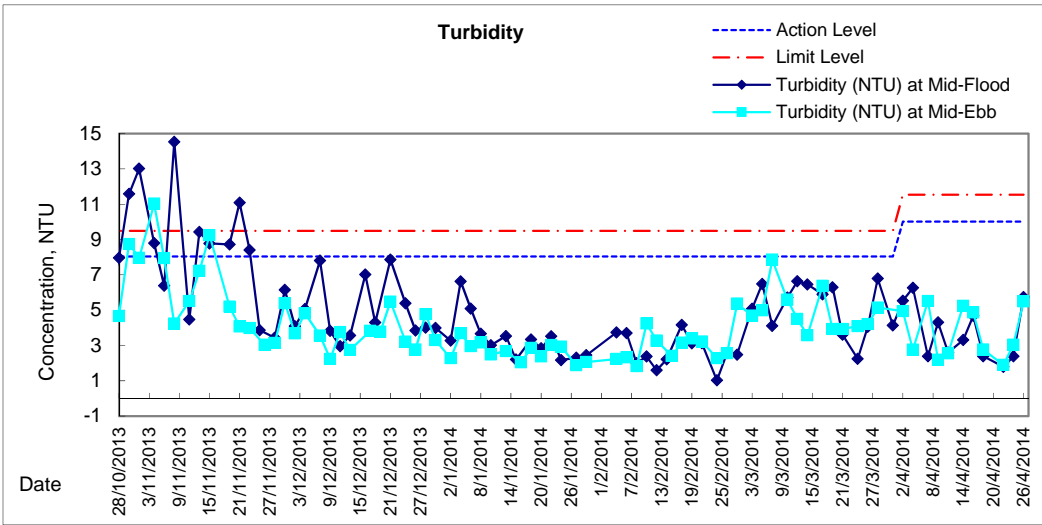
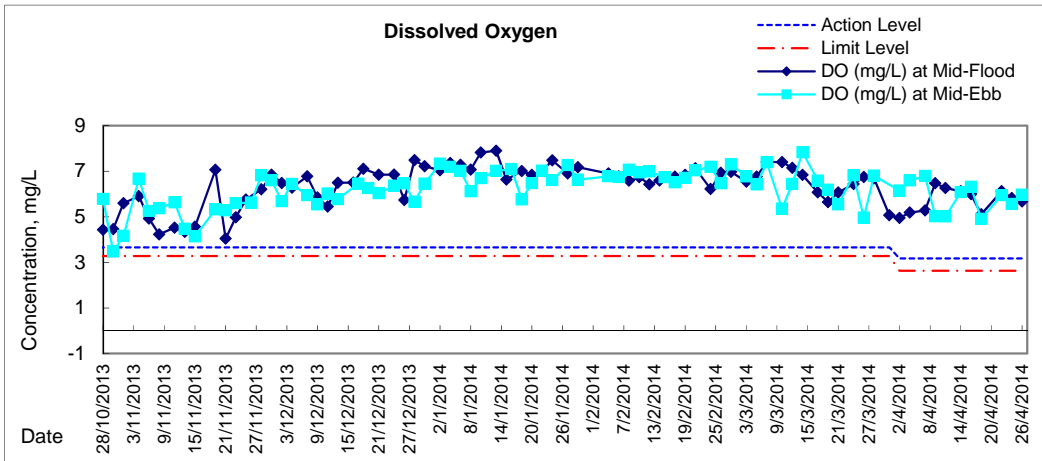


# Graphic Presentation of Water Quality Result of WSD9 - Tai Wan



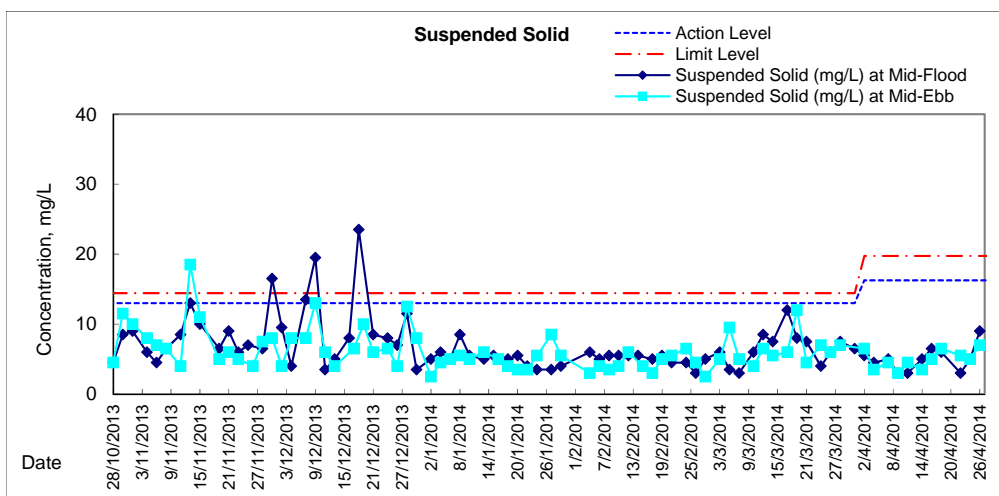
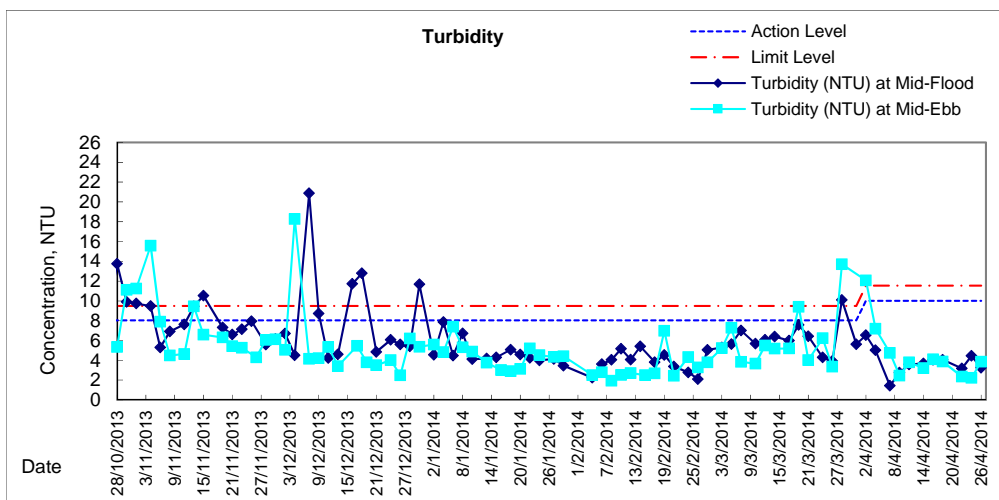
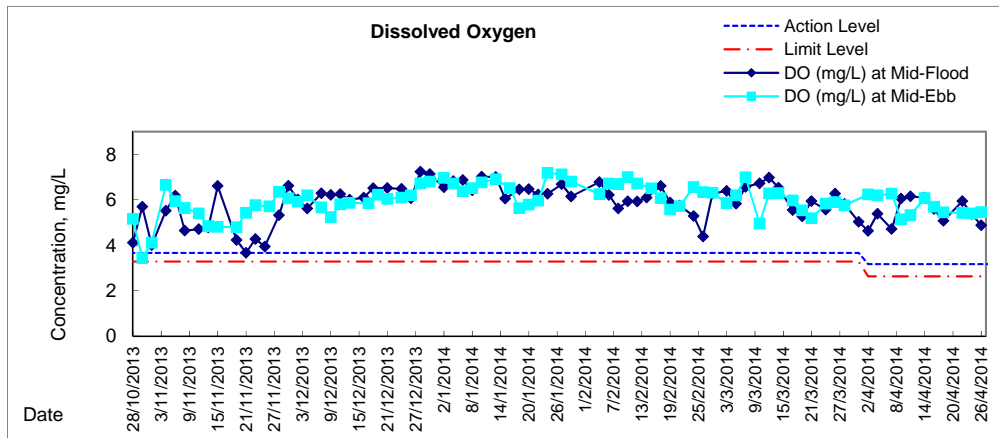


# Graphic Presentation of Water Quality Result of WSD17 - Quarry Bay



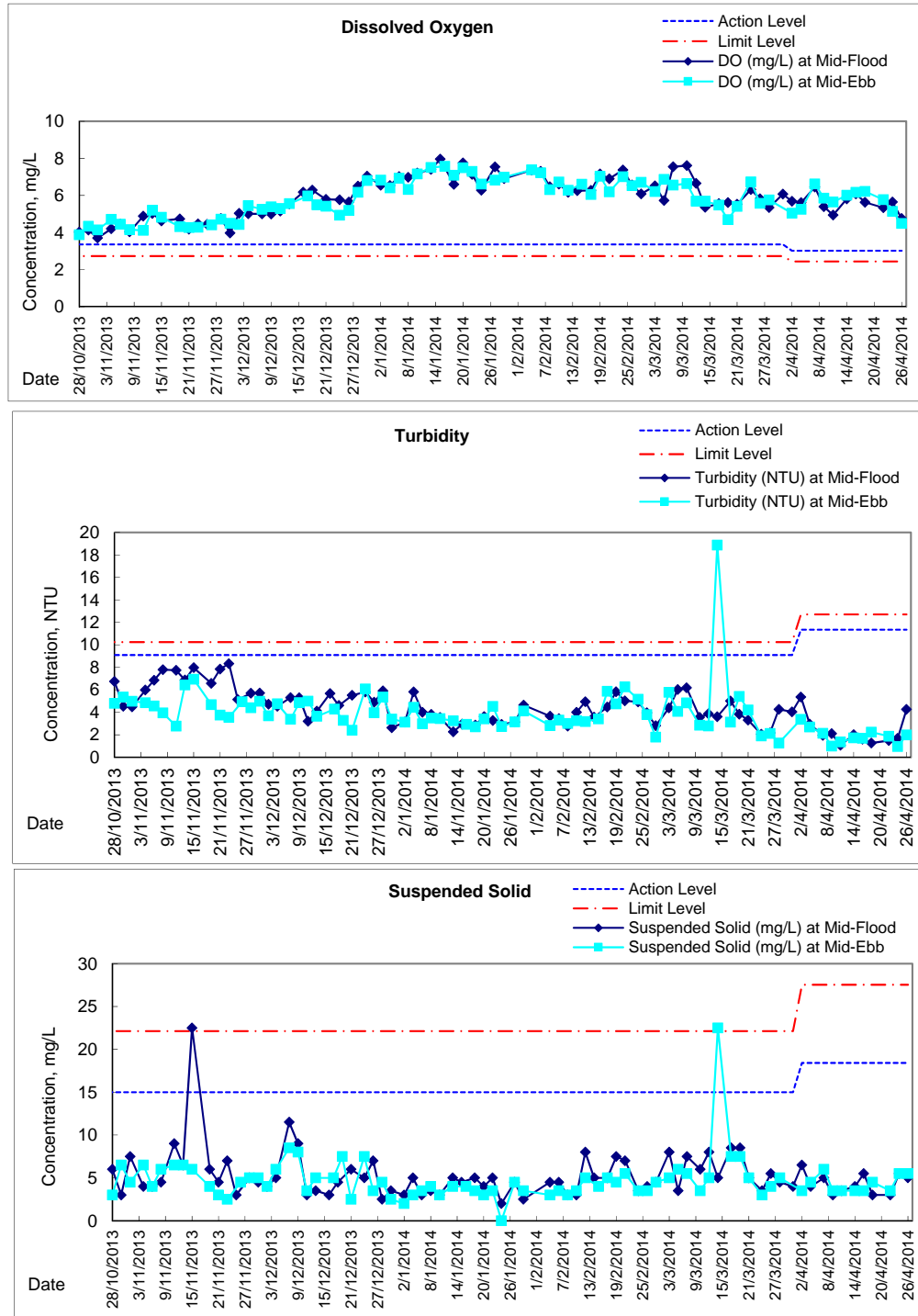


# Graphic Presentation of Water Quality Result of WSD19 - Sheung Wan





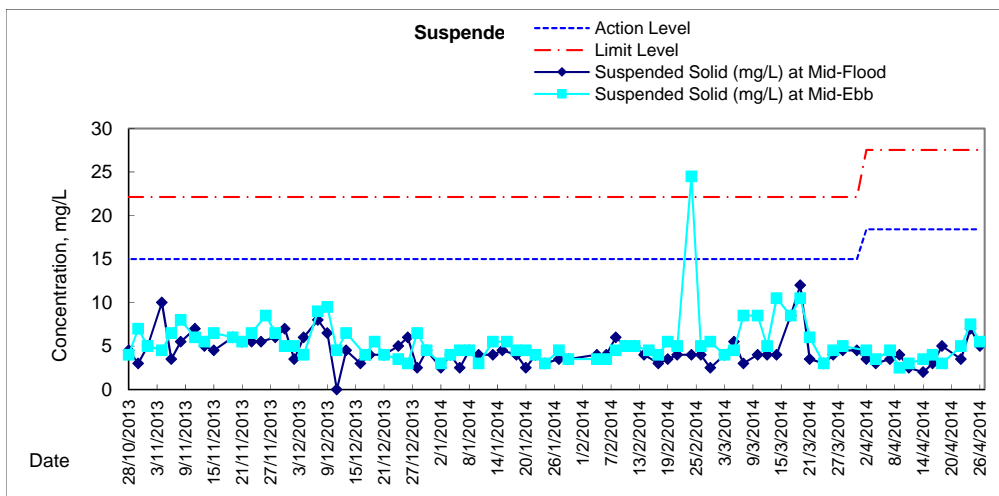
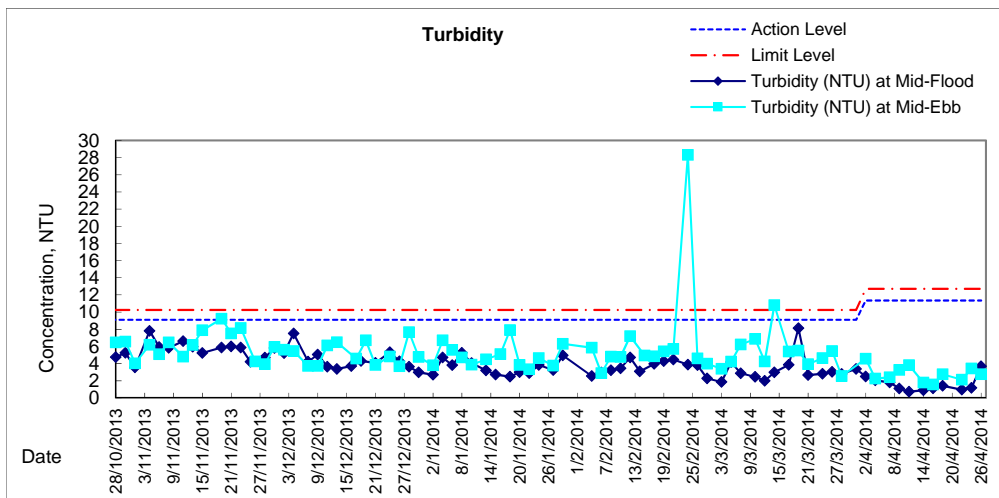
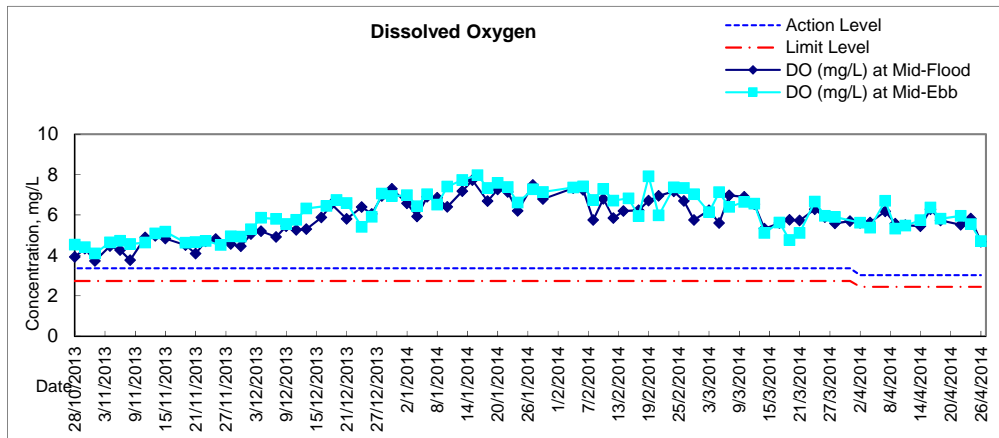
### Graphic Presentation of Water Quality Result of C1 - HKCEC





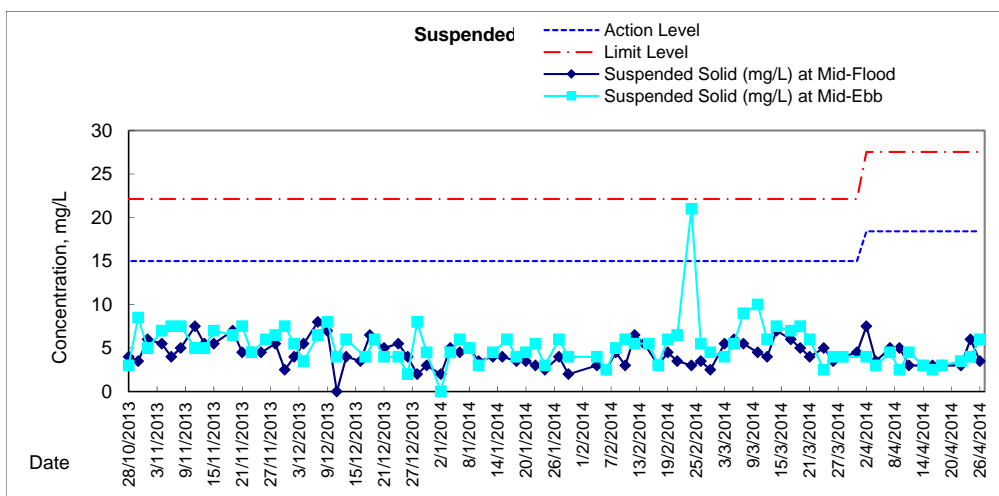
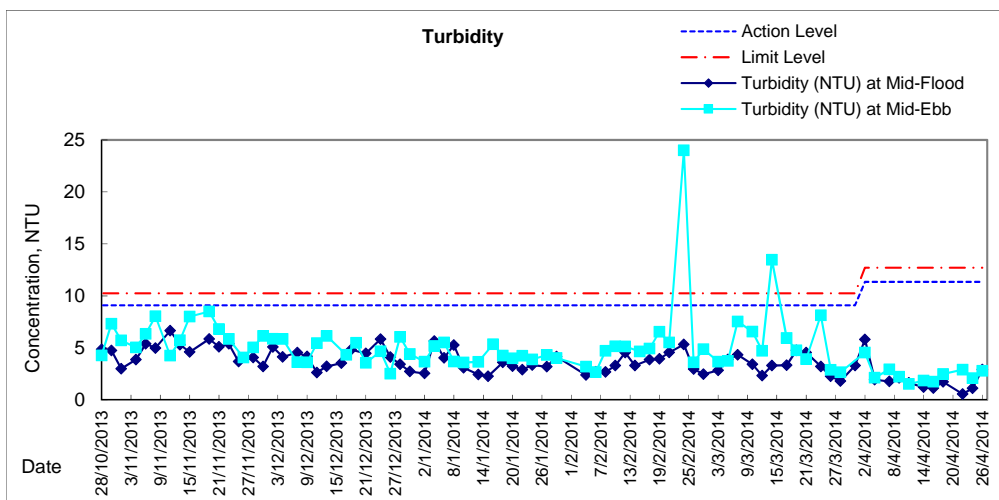
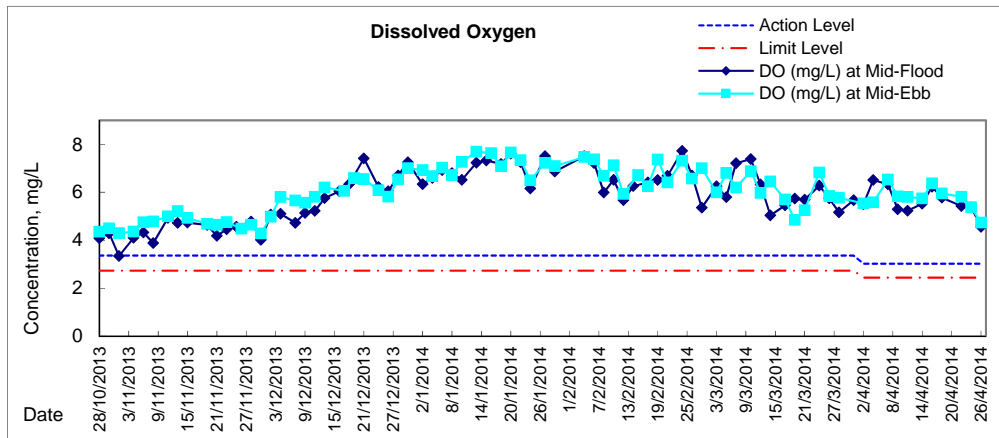


# Graphic Presentation of Water Quality Result of P1 - HKCEC Phase I



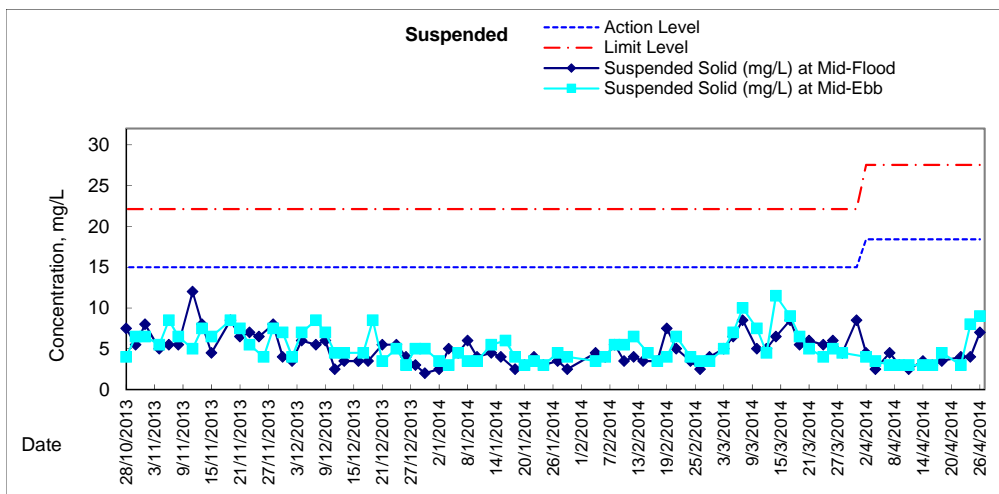
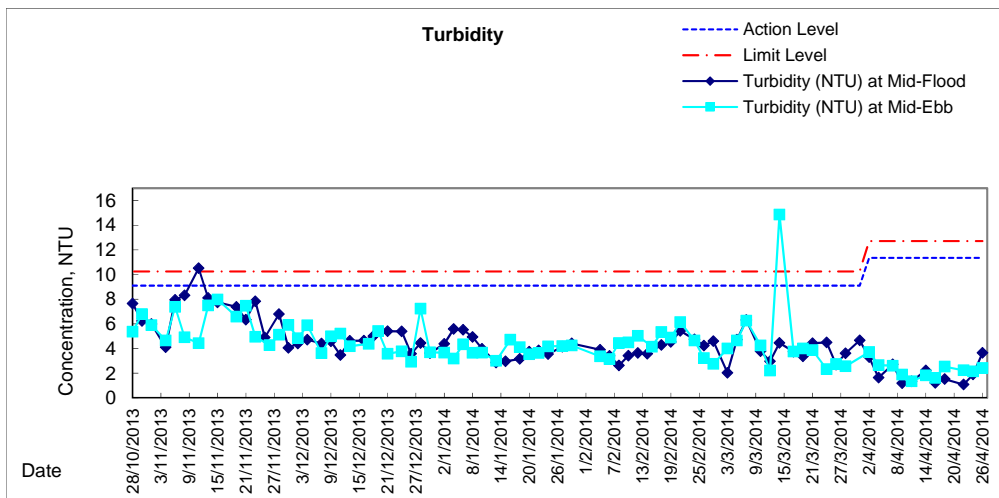
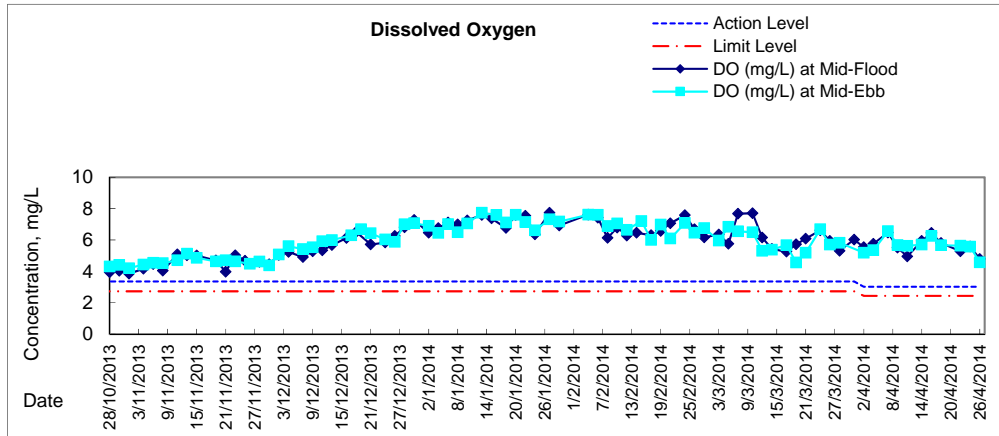


Graphic Presentation of Water Quality Result of P3 - APA



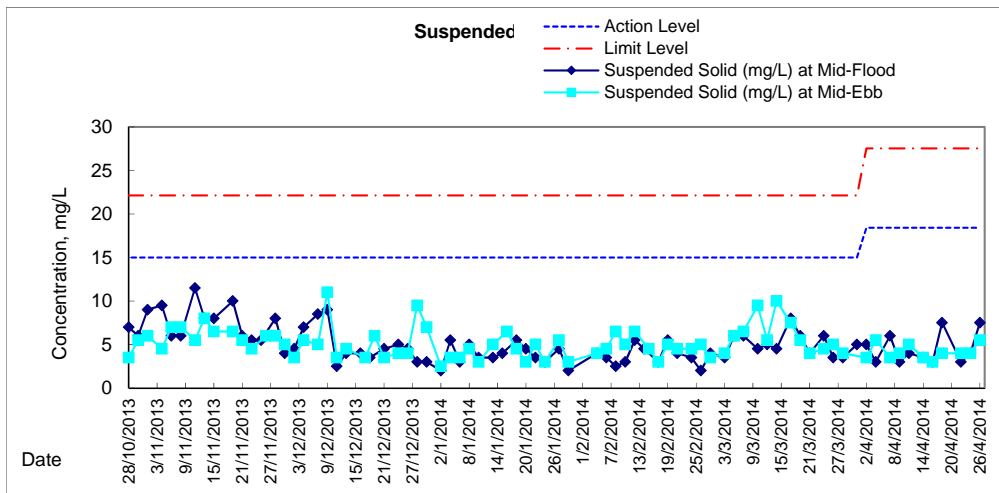
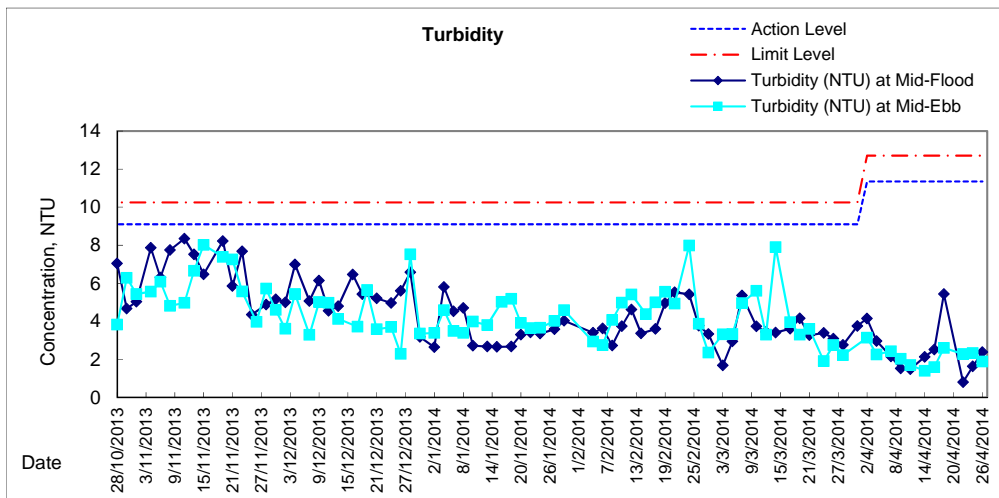
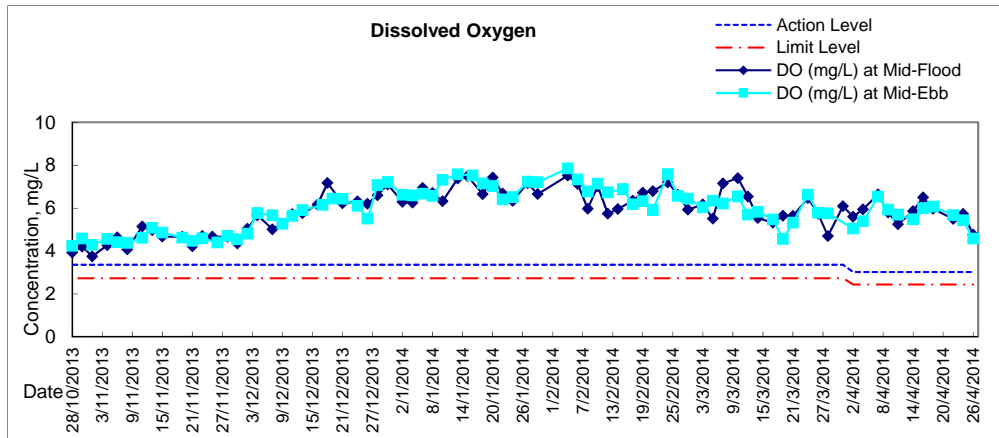


### Graphic Presentation of Water Quality Result of P5 - WCT / RT / IT



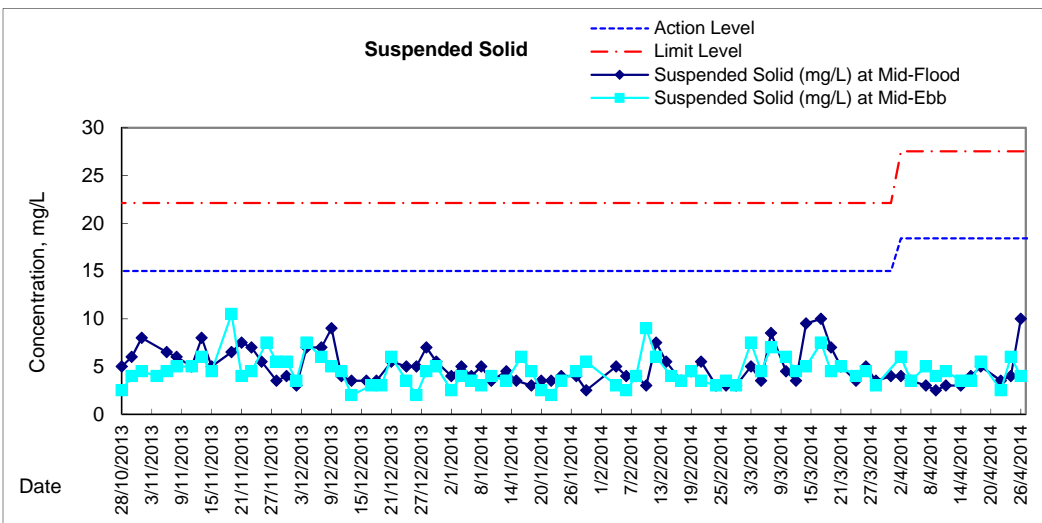
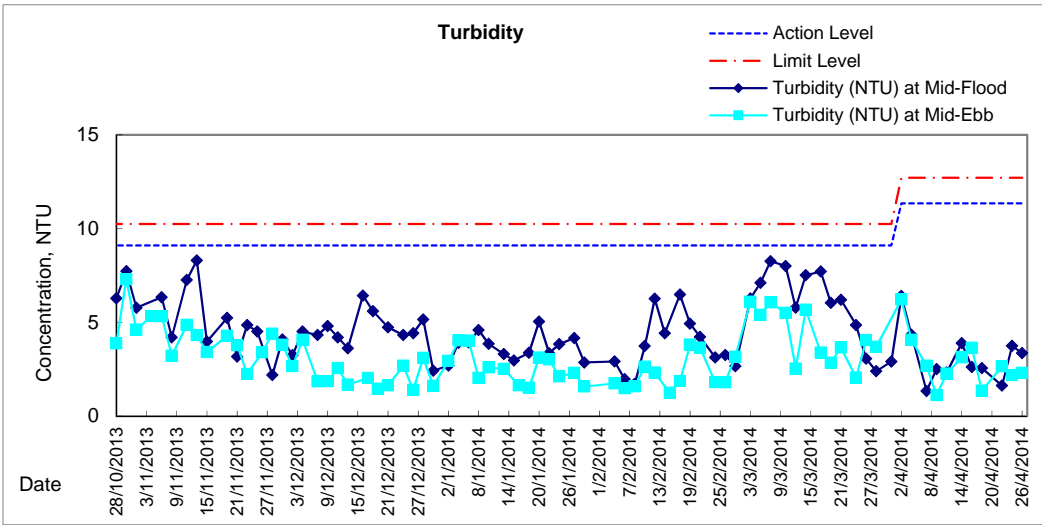
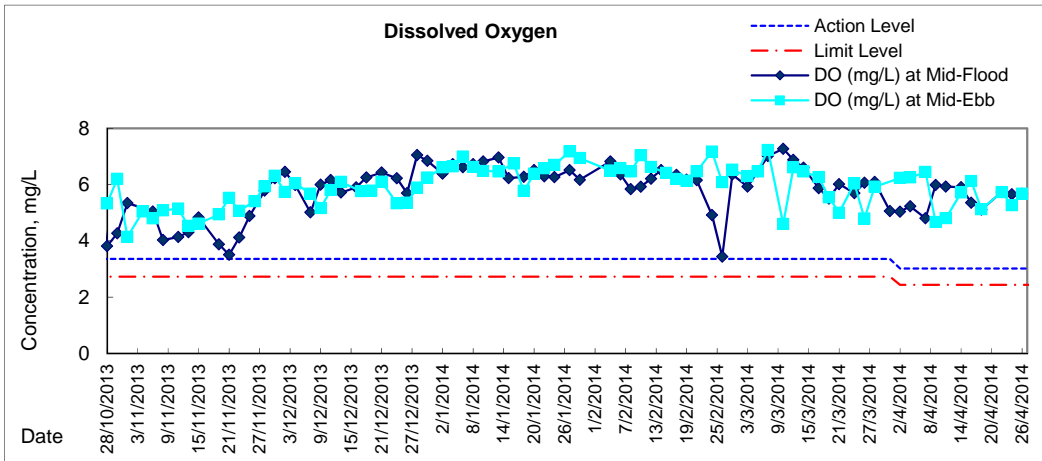


### Graphic Presentation of Water Quality Result of P4 - SOC



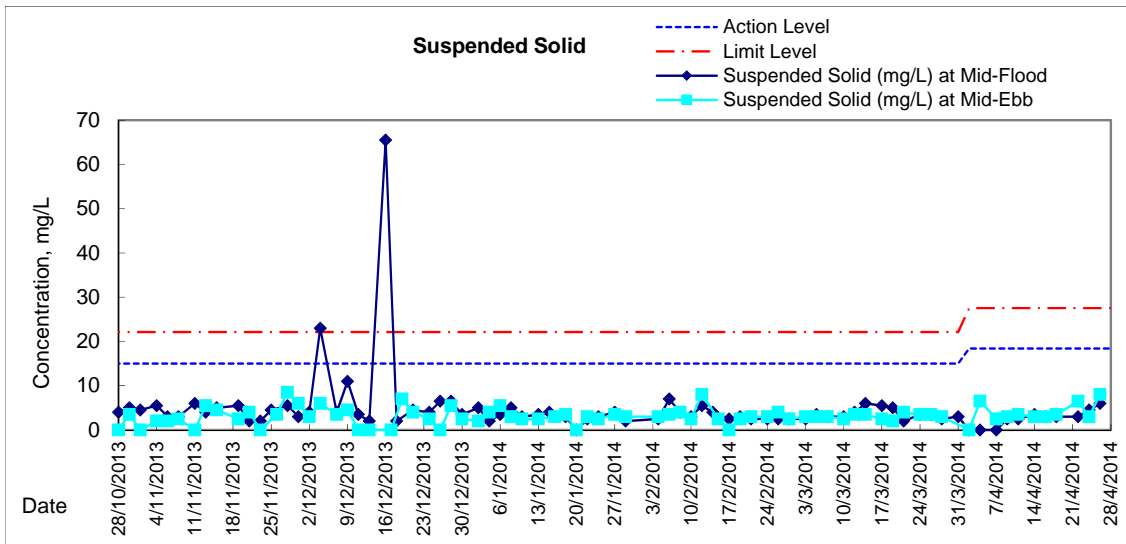
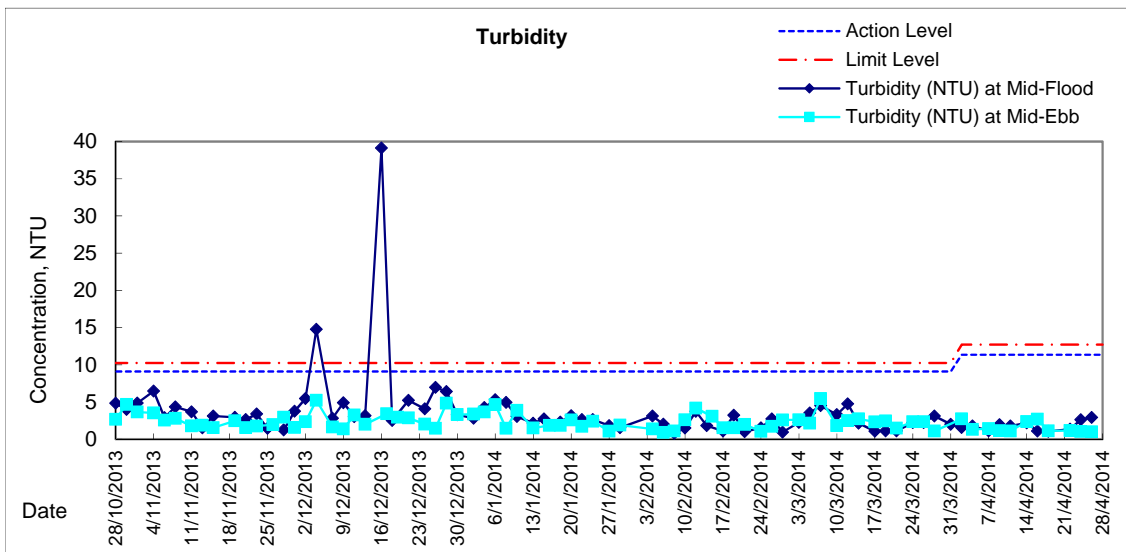
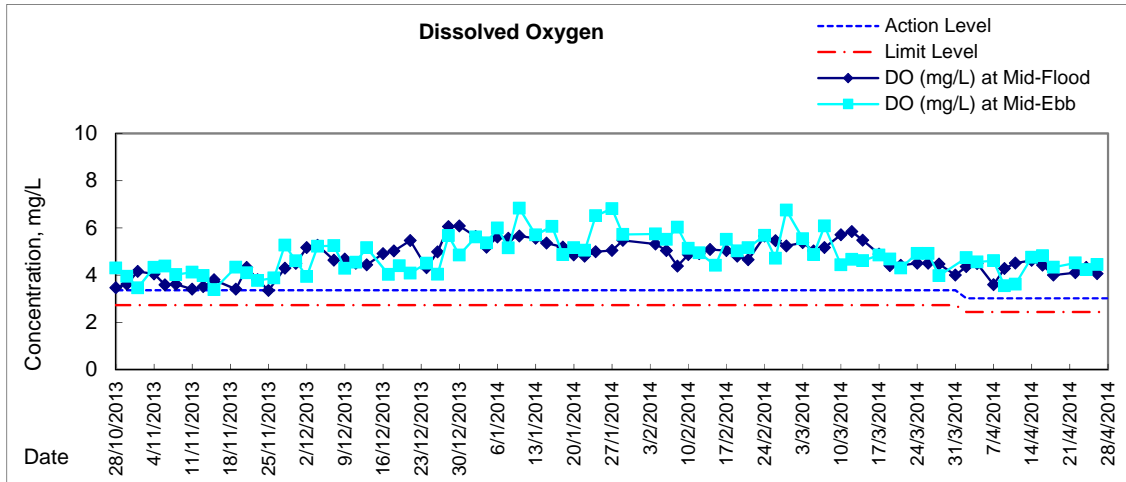


# Graphic Presentation of Water Quality Result of RW21-P789 - GEC/CRC/SHK





# Graphic Presentation of Water Quality Result of C7 - Windsor House





**Water Monitoring Result at C6 - Excelsior Hotel  
Mid-Flood Tide**

Date	Time	Weather Condition	Sampling Depth		Water Temperature			pH			Salinity			DO Saturation			DO		
					°C			-			ppt		%		mg/L				
			m	Value	Average	Value	Average	Value	Average	Value	Average	Value	Average	Value	Average				
28/3/2014	-	Cloudy	Surface	-	-	-	-	-	-	-	-	-	-	-	-	-	-	-	-
	15:05		Middle	1.5	20.40	20.40	20.4	8.04	8.04	8.0	31.63	31.63	31.6	65.0	64.1	64.6	4.85	4.79	4.82
	-		Bottom	-	-	-	-	-	-	-	-	-	-	-	-	-	-	-	-
31/3/2014	-	Cloudy	Surface	-	-	-	-	-	-	-	-	-	-	-	-	-	-	-	-
	19:48		Middle	1.5	21.10	21.10	21.1	8.07	8.07	8.1	30.12	30.15	30.1	59.1	59.0	59.1	4.40	4.38	4.39
	-		Bottom	-	-	-	-	-	-	-	-	-	-	-	-	-	-	-	-
2/4/2014	-	Cloudy	Surface	-	-	-	-	-	-	-	-	-	-	-	-	-	-	-	-
	20:15		Middle	1.5	20.70	20.70	20.7	8.09	8.09	8.1	34.45	34.46	34.5	59.4	59.8	59.6	4.45	4.51	4.48
	-		Bottom	-	-	-	-	-	-	-	-	-	-	-	-	-	-	-	-
4/4/2014	-	Cloudy	Surface	-	-	-	-	-	-	-	-	-	-	-	-	-	-	-	-
	20:10		Middle	1.0	20.40	20.40	20.4	7.59	7.59	7.6	33.42	33.66	33.5	61.0	62.3	61.7	4.83	4.77	4.80
	-		Bottom	-	-	-	-	-	-	-	-	-	-	-	-	-	-	-	-
7/4/2014	-	Cloudy	Surface	-	-	-	-	-	-	-	-	-	-	-	-	-	-	-	-
	6:40		Middle	1.5	21.30	21.30	21.3	7.95	7.94	7.9	32.04	32.04	32.0	55.4	55.3	55.4	4.06	4.04	4.05
	-		Bottom	-	-	-	-	-	-	-	-	-	-	-	-	-	-	-	-
9/4/2014	-	Fine	Surface	-	-	-	-	-	-	-	-	-	-	-	-	-	-	-	-
	10:40		Middle	1.5	20.70	20.70	20.7	8.20	8.20	8.2	31.32	31.32	31.3	58.6	59.1	58.9	4.37	4.40	4.39
	-		Bottom	-	-	-	-	-	-	-	-	-	-	-	-	-	-	-	-
11/4/2014	-	Fine	Surface	-	-	-	-	-	-	-	-	-	-	-	-	-	-	-	-
	14:30		Middle	1.5	22.30	22.30	22.3	8.18	8.18	8.2	31.40	31.40	31.4	82.1	80.8	81.5	6.00	5.89	5.95
	-		Bottom	-	-	-	-	-	-	-	-	-	-	-	-	-	-	-	-
14/4/2014	-	Cloudy	Surface	-	-	-	-	-	-	-	-	-	-	-	-	-	-	-	-
	16:40		Middle	1.5	21.60	21.60	21.6	8.26	8.26	8.3	31.22	31.22	31.2	70.5	70.4	70.5	5.17	5.16	5.17
	-		Bottom	-	-	-	-	-	-	-	-	-	-	-	-	-	-	-	-
16/4/2014	-	Cloudy	Surface	-	-	-	-	-	-	-	-	-	-	-	-	-	-	-	-
	19:21		Middle	1.5	22.80	22.80	22.8	8.40	8.40	8.4	31.90	31.90	31.9	73.3	72.6	73.0	5.24	5.19	5.22
	-		Bottom	-	-	-	-	-	-	-	-	-	-	-	-	-	-	-	-
18/4/2014	-	Fine	Surface	-	-	-	-	-	-	-	-	-	-	-	-	-	-	-	-
	19:40		Middle	1.0	24.10	24.10	24.1	7.95	7.95	8.0	30.89	30.89	30.9	67.0	67.3	67.2	4.72	4.74	4.73
	-		Bottom	-	-	-	-	-	-	-	-	-	-	-	-	-	-	-	-
22/4/2014	-	Fine	Surface	-	-	-	-	-	-	-	-	-	-	-	-	-	-	-	-
	12:15		Middle	1.5	23.10	23.10	23.1	8.11	8.11	8.1	34.41	34.41	34.4	69.7	69.8	69.8	4.99	4.99	4.99
	-		Bottom	-	-	-	-	-	-	-	-	-	-	-	-	-	-	-	-
24/4/2014	-	Cloudy	Surface	-	-	-	-	-	-	-	-	-	-	-	-	-	-	-	-
	14:40		Middle	1.5	22.50	22.50	22.5	8.18	8.18	8.2	35.13	35.13	35.1	83.1	79.0	81.1	5.87	5.58	5.73
	-		Bottom	-	-	-	-	-	-	-	-	-	-	-	-	-	-	-	-
26/4/2014	-	Cloudy	Surface	-	-	-	-	-	-	-	-	-	-	-	-	-	-	-	-
	16:04		Middle	1.5	22.90	22.90	22.9	8.11	8.11	8.1	35.06	35.06	35.1	62.8	61.5	62.2	4.41	4.32	4.37
	-		Bottom	-	-	-	-	-	-	-	-	-	-	-	-	-	-	-	-

Remarks:

Single underline denotes exceedance over Action Level.

Double underline denotes exceedance over Limit Level.

Due to the Amber Rainstorm signal was hoisted on 31 March 2014, water quality monitoring at ebb tide were cancelled



**Water Monitoring Result at C7 - Windsor House  
Mid-Flood Tide**

Date	Time	Weather Condition	Sampling Depth		Water Temperature			pH			Salinity			DO Saturation			DO			
					°C			-			ppt		%		mg/L					
			m	Value	Average	Value	Average	Value	Average	Value	Average	Value	Average	Value	Average					
28/3/2014	-	Cloudy	Surface	-	-	-	-	-	-	-	-	-	-	-	-	-	-	-	-	
	15:10		Middle	1.5	20.60	20.60	20.6	8.04	8.04	8.0	31.69	31.69	31.7	58.6	58.6	58.6	4.37	4.37	4.37	
	-		Bottom	-	-	-	-	-	-	-	-	-	-	-	-	-	-	-	-	-
31/3/2014	-	Cloudy	Surface	-	-	-	-	-	-	-	-	-	-	-	-	-	-	-	-	-
	19:25		Middle	1.5	20.20	20.20	20.2	7.99	7.99	8.0	29.84	29.84	29.8	53.6	53.7	53.7	4.08	4.08	4.08	
	-		Bottom	-	-	-	-	-	-	-	-	-	-	-	-	-	-	-	-	-
2/4/2014	-	Cloudy	Surface	-	-	-	-	-	-	-	-	-	-	-	-	-	-	-	-	-
	20:05		Middle	1.5	20.80	20.80	20.8	8.02	8.02	8.0	34.39	34.39	34.4	53.9	54.6	54.3	4.53	4.64	4.59	
	-		Bottom	-	-	-	-	-	-	-	-	-	-	-	-	-	-	-	-	-
4/4/2014	-	Cloudy	Surface	-	-	-	-	-	-	-	-	-	-	-	-	-	-	-	-	-
	20:00		Middle	1.0	20.30	20.30	20.3	7.68	7.68	7.7	31.35	31.35	31.4	51.9	53.1	52.5	4.28	4.33	4.31	
	-		Bottom	-	-	-	-	-	-	-	-	-	-	-	-	-	-	-	-	-
7/4/2014	-	Cloudy	Surface	-	-	-	-	-	-	-	-	-	-	-	-	-	-	-	-	-
	6:31		Middle	1.5	20.90	20.90	20.9	7.97	7.97	8.0	33.49	33.49	33.5	48.2	47.9	48.1	3.53	3.51	3.52	
	-		Bottom	-	-	-	-	-	-	-	-	-	-	-	-	-	-	-	-	-
9/4/2014	-	Fine	Surface	-	-	-	-	-	-	-	-	-	-	-	-	-	-	-	-	-
	10:30		Middle	1.5	20.70	20.70	20.7	8.20	8.20	8.2	31.68	31.68	31.7	73.4	72.3	72.9	5.45	5.37	5.41	
	-		Bottom	-	-	-	-	-	-	-	-	-	-	-	-	-	-	-	-	-
11/4/2014	-	Fine	Surface	-	-	-	-	-	-	-	-	-	-	-	-	-	-	-	-	-
	14:35		Middle	1.5	21.60	21.60	21.6	8.19	8.19	8.2	31.54	31.54	31.5	59.9	60.3	60.1	4.36	4.39	4.38	
	-		Bottom	-	-	-	-	-	-	-	-	-	-	-	-	-	-	-	-	-
14/4/2014	-	Cloudy	Surface	-	-	-	-	-	-	-	-	-	-	-	-	-	-	-	-	-
	16:45		Middle	1.5	21.80	21.80	21.8	8.25	8.25	8.3	30.81	30.81	30.8	58.9	60.2	59.6	4.32	4.42	4.37	
	-		Bottom	-	-	-	-	-	-	-	-	-	-	-	-	-	-	-	-	-
16/4/2014	-	Cloudy	Surface	-	-	-	-	-	-	-	-	-	-	-	-	-	-	-	-	-
	19:12		Middle	1.5	23.10	23.10	23.1	8.24	8.24	8.2	31.89	31.89	31.9	60.0	60.2	60.1	4.28	4.29	4.29	
	-		Bottom	-	-	-	-	-	-	-	-	-	-	-	-	-	-	-	-	-
18/4/2014	-	Fine	Surface	-	-	-	-	-	-	-	-	-	-	-	-	-	-	-	-	-
	19:32		Middle	1.0	24.20	24.20	24.2	7.91	7.91	7.9	30.38	30.38	30.4	56.3	57.5	56.9	3.96	4.05	4.01	
	-		Bottom	-	-	-	-	-	-	-	-	-	-	-	-	-	-	-	-	-
22/4/2014	-	Fine	Surface	-	-	-	-	-	-	-	-	-	-	-	-	-	-	-	-	-
	12:25		Middle	1.5	23.20	23.20	23.2	8.06	8.06	8.1	34.65	34.65	34.7	55.9	55.9	55.9	3.91	3.91	3.91	
	-		Bottom	-	-	-	-	-	-	-	-	-	-	-	-	-	-	-	-	-
24/4/2014	-	Cloudy	Surface	-	-	-	-	-	-	-	-	-	-	-	-	-	-	-	-	-
	14:50		Middle	1.5	22.70	22.70	22.7	8.17	8.17	8.2	34.95	34.95	35.0	60.6	61.7	61.2	4.28	4.35	4.32	
	-		Bottom	-	-	-	-	-	-	-	-	-	-	-	-	-	-	-	-	-
26/4/2014	-	Cloudy	Surface	-	-	-	-	-	-	-	-	-	-	-	-	-	-	-	-	-
	16:14		Middle	1.5	23.00	23.00	23.0	8.10	8.10	8.1	35.12	35.12	35.1	54.5	55.4	55.0	3.82	3.88	3.85	
	-		Bottom	-	-	-	-	-	-	-	-	-	-	-	-	-	-	-	-	-

Remarks:

Single underline denotes exceedance over Action Level.

Double underline denotes exceedance over Limit Level.

Due to the Amber Rainstorm signal was hoisted on 31 March 2014, water quality monitoring at ebb tide were cancelled





**Water Monitoring Result at Ex-WPCWA SW - South-western corners of ex-Public Cargo Works Area  
Mid-Flood Tide**

Date	Time	Weather Condition	Sampling Depth		Water Temperature			pH			Salinity			DO Saturation			DO		
					°C			-			ppt			%			mg/L		
			m	Value	Average	Value	Average	Value	Average	Value	Average	Value	Average	Value	Average	Value	Average		
28/3/2014	-	Cloudy	Surface	-	-	-	-	-	-	-	-	-	-	-	-	-	-	-	-
	14:57		Middle	1.5	20.00	20.00	20.0	8.05	8.05	8.1	30.16	30.16	30.2	74.8	75.0	74.9	5.70	5.71	5.71
	-		Bottom	-	-	-	-	-	-	-	-	-	-	-	-	-	-	-	-
31/3/2014	-	Cloudy	Surface	-	-	-	-	-	-	-	-	-	-	-	-	-	-	-	-
	21:05		Middle	1.5	21.00	21.00	21.0	8.17	8.17	8.2	23.07	23.07	23.1	55.3	55.4	55.4	4.53	4.54	4.54
	-		Bottom	-	-	-	-	-	-	-	-	-	-	-	-	-	-	-	-
2/4/2014	-	Cloudy	Surface	-	-	-	-	-	-	-	-	-	-	-	-	-	-	-	-
	21:30		Middle	1.5	20.90	20.90	20.9	8.14	8.14	8.1	24.02	24.01	24.0	46.7	46.6	46.7	3.65	3.62	3.64
	-		Bottom	-	-	-	-	-	-	-	-	-	-	-	-	-	-	-	-
4/4/2014	-	Cloudy	Surface	-	-	-	-	-	-	-	-	-	-	-	-	-	-	-	-
	21:25		Middle	1.0	20.60	20.60	20.6	8.08	8.08	8.1	21.28	21.28	21.3	28.6	29.1	28.9	2.41	2.41	<u>2.41</u>
	-		Bottom	-	-	-	-	-	-	-	-	-	-	-	-	-	-	-	-
7/4/2014	-	Cloudy	Surface	-	-	-	-	-	-	-	-	-	-	-	-	-	-	-	-
	6:16		Middle	1.5	21.00	21.00	21.0	8.03	8.03	8.0	25.38	25.42	25.4	33.1	33.7	33.4	2.66	2.61	<u>2.64</u>
	-		Bottom	-	-	-	-	-	-	-	-	-	-	-	-	-	-	-	-
9/4/2014	-	Fine	Surface	-	-	-	-	-	-	-	-	-	-	-	-	-	-	-	-
	10:27		Middle	1.5	20.70	20.70	20.7	8.23	8.23	8.2	31.22	31.22	31.2	76.4	75.7	76.1	5.70	5.65	5.68
	-		Bottom	-	-	-	-	-	-	-	-	-	-	-	-	-	-	-	-
11/4/2014	-	Fine	Surface	-	-	-	-	-	-	-	-	-	-	-	-	-	-	-	-
	14:22		Middle	1.5	21.30	21.30	21.3	8.20	8.20	8.2	31.70	31.70	31.7	79.0	78.1	78.6	5.80	5.73	5.77
	-		Bottom	-	-	-	-	-	-	-	-	-	-	-	-	-	-	-	-
14/4/2014	-	Cloudy	Surface	-	-	-	-	-	-	-	-	-	-	-	-	-	-	-	-
	16:17		Middle	1.5	21.50	21.50	21.5	8.22	8.22	8.2	30.83	30.83	30.8	73.0	72.6	72.8	5.38	5.35	5.37
	-		Bottom	-	-	-	-	-	-	-	-	-	-	-	-	-	-	-	-
16/4/2014	-	Cloudy	Surface	-	-	-	-	-	-	-	-	-	-	-	-	-	-	-	-
	20:40		Middle	1.5	22.70	22.70	22.7	8.20	8.20	8.2	21.89	21.89	21.9	43.7	43.8	43.8	3.66	3.66	3.66
	-		Bottom	-	-	-	-	-	-	-	-	-	-	-	-	-	-	-	-
18/4/2014	-	Fine	Surface	-	-	-	-	-	-	-	-	-	-	-	-	-	-	-	-
	19:15		Middle	1.0	24.30	24.30	24.3	8.50	8.50	8.5	15.48	15.49	15.5	16.5	16.6	16.6	1.26	1.27	<u>1.27</u>
	-		Bottom	-	-	-	-	-	-	-	-	-	-	-	-	-	-	-	-
22/4/2014	12:07	Fine	Surface	1.0	23.00	23.00	23.0	8.10	8.10	8.1	33.90	33.90	33.9	75.8	75.3	75.6	5.34	5.31	5.33
	-		Middle	2.0	-	-	-	-	-	-	-	-	-	-	-	-	-	-	-
	12:09		Bottom	3.0	23.10	23.10	23.1	8.09	8.09	8.1	33.89	33.89	33.9	75.3	75.4	75.4	5.31	5.31	5.31
24/4/2014	-	Cloudy	Surface	-	-	-	-	-	-	-	-	-	-	-	-	-	-	-	-
	14:37		Middle	1.5	22.50	22.50	22.5	8.19	8.19	8.2	35.15	35.15	35.2	75.3	74.4	74.9	5.32	5.26	5.29
	-		Bottom	-	-	-	-	-	-	-	-	-	-	-	-	-	-	-	-
26/4/2014	-	Cloudy	Surface	-	-	-	-	-	-	-	-	-	-	-	-	-	-	-	-
	15:40		Middle	1.5	22.80	22.80	22.8	8.20	8.20	8.2	30.37	30.37	30.4	52.0	50.3	51.2	3.75	3.63	3.69
	-		Bottom	-	-	-	-	-	-	-	-	-	-	-	-	-	-	-	-

Remarks:

Single underline denotes exceedance over Action Level.

Double underline denotes exceedance over Limit Level.

Due to the Amber Rainstorm signal was hoisted on 31 March 2014, water quality monitoring at ebb tide were cancelled



**Water Monitoring Result at Ex-WPCWA SE - South-eastern corners of ex-Public Cargo Works Area  
Mid-Flood Tide**

Date	Time	Weater Condition	Sampling Depth		Water Temperature			pH			Salinity			DO Saturation			DO		
					°C			-			ppt		%		mg/L				
			m	Value	Average	Value	Average	Value	Average	Value	Average	Value	Average	Value	Average				
28/3/2014	-	Cloudy	Surface	-	-	-	-	-	-	-	-	-	-	-	-	-	-	-	-
	14:55		Middle	1.5	19.90	19.90	19.9	8.06	8.06	8.1	31.35	31.35	31.4	75.5	75.1	75.3	5.69	5.66	5.68
	-		Bottom	-	-	-	-	-	-	-	-	-	-	-	-	-	-	-	-
31/3/2014	-	Cloudy	Surface	-	-	-	-	-	-	-	-	-	-	-	-	-	-	-	-
	21:12		Middle	1.5	21.10	21.10	21.1	8.11	8.11	8.1	23.12	23.12	23.1	56.7	56.3	56.5	4.74	4.71	4.73
	-		Bottom	-	-	-	-	-	-	-	-	-	-	-	-	-	-	-	-
2/4/2014	-	Cloudy	Surface	-	-	-	-	-	-	-	-	-	-	-	-	-	-	-	-
	21:37		Middle	1.5	21.00	21.00	21.0	7.98	7.98	8.0	23.64	23.64	23.6	46.9	47.3	47.1	3.67	3.79	3.73
	-		Bottom	-	-	-	-	-	-	-	-	-	-	-	-	-	-	-	-
4/4/2014	-	Cloudy	Surface	-	-	-	-	-	-	-	-	-	-	-	-	-	-	-	-
	21:32		Middle	1.0	20.70	20.70	20.7	7.86	7.86	7.9	21.06	21.06	21.1	27.3	27.8	27.6	2.33	2.37	<u>2.35</u>
	-		Bottom	-	-	-	-	-	-	-	-	-	-	-	-	-	-	-	-
7/4/2014	-	Cloudy	Surface	-	-	-	-	-	-	-	-	-	-	-	-	-	-	-	-
	6:22		Middle	1.5	21.00	21.00	21.0	7.88	7.88	7.9	25.61	25.61	25.6	25.7	26.2	26.0	1.98	2.03	<u>2.01</u>
	-		Bottom	-	-	-	-	-	-	-	-	-	-	-	-	-	-	-	-
9/4/2014	-	Fine	Surface	-	-	-	-	-	-	-	-	-	-	-	-	-	-	-	-
	10:25		Middle	1.5	20.90	20.90	20.9	8.27	8.27	8.3	30.77	30.77	30.8	69.7	69.1	69.4	5.18	5.14	5.16
	-		Bottom	-	-	-	-	-	-	-	-	-	-	-	-	-	-	-	-
11/4/2014	-	Fine	Surface	-	-	-	-	-	-	-	-	-	-	-	-	-	-	-	-
	14:20		Middle	1.5	21.60	21.60	21.6	8.23	8.23	8.2	31.27	31.27	31.3	74.0	73.3	73.7	5.40	5.34	5.37
	-		Bottom	-	-	-	-	-	-	-	-	-	-	-	-	-	-	-	-
14/4/2014	-	Cloudy	Surface	-	-	-	-	-	-	-	-	-	-	-	-	-	-	-	-
	16:15		Middle	1.5	21.70	21.70	21.7	8.24	8.24	8.2	30.09	30.09	30.1	76.5	75.1	75.8	5.64	5.53	5.59
	-		Bottom	-	-	-	-	-	-	-	-	-	-	-	-	-	-	-	-
16/4/2014	-	Cloudy	Surface	-	-	-	-	-	-	-	-	-	-	-	-	-	-	-	-
	20:47		Middle	1.5	22.20	22.20	22.2	8.09	8.09	8.1	22.99	22.99	23.0	48.5	49.0	48.8	3.68	3.71	3.70
	-		Bottom	-	-	-	-	-	-	-	-	-	-	-	-	-	-	-	-
18/4/2014	-	Fine	Surface	-	-	-	-	-	-	-	-	-	-	-	-	-	-	-	-
	19:22		Middle	1.0	24.40	24.40	24.4	8.08	8.08	8.1	14.89	14.89	14.9	14.6	14.6	14.6	1.12	1.12	<u>1.12</u>
	-		Bottom	-	-	-	-	-	-	-	-	-	-	-	-	-	-	-	-
22/4/2014	12:00	Fine	Surface	1.0	23.00	23.00	23.0	8.11	8.11	8.1	34.77	34.77	34.8	82.6	82.5	82.6	5.79	5.78	5.79
	-		Middle	2.0	-	-	-	-	-	-	-	-	-	-	-	-	-	-	-
	12:02		Bottom	3.0	22.60	22.60	22.6	8.09	8.09	8.1	34.78	34.78	34.8	80.9	80.7	80.8	5.67	5.65	5.66
24/4/2014	-	Cloudy	Surface	-	-	-	-	-	-	-	-	-	-	-	-	-	-	-	-
	14:35		Middle	1.5	22.40	22.40	22.4	8.21	8.21	8.2	35.11	35.11	35.1	74.8	74.2	74.5	5.28	5.25	5.27
	-		Bottom	-	-	-	-	-	-	-	-	-	-	-	-	-	-	-	-
26/4/2014	-	Cloudy	Surface	-	-	-	-	-	-	-	-	-	-	-	-	-	-	-	-
	15:35		Middle	1.5	22.70	22.70	22.7	8.21	8.21	8.2	33.89	33.89	33.9	57.1	57.1	57.1	4.05	4.05	4.05
	-		Bottom	-	-	-	-	-	-	-	-	-	-	-	-	-	-	-	-

Remarks:

Single underline denotes exceedance over Action Level.

Double underline denotes exceedance over Limit Level.

Due to the Amber Rainstorm signal was hoisted on 31 March 2014, water quality monitoring at ebb tide were cancelled



**Water Monitoring Result at C6 - Excelsior Hotel  
Mid-Ebb Tide**

Date	Time	Weather Condition	Sampling Depth	Water Temperature			pH			Salinity			DO Saturation			DO			
				m	°C		-		ppt		%		mg/L						
					Value	Average	Value	Average	Value	Average	Value	Average	Value	Average					
28/3/2014	-	Cloudy	Surface	-	-	-	-	-	-	-	-	-	-	-	-	-	-	-	
	12:07		Middle	2	20.00	20.00	20.0	8.00	7.95	8.0	31.74	31.74	31.7	63.8	64.7	64.3	4.88	4.87	4.88
	-		Bottom	-	-	-	-	-	-	-	-	-	-	-	-	-	-	-	-
31/3/2014	-	Amber Rainstorm	Surface	-	-	-	-	-	-	-	-	-	-	-	-	-	-	-	
	-		Middle	-	-	-	-	-	-	-	-	-	-	-	-	-	-	-	
	-		Bottom	-	-	-	-	-	-	-	-	-	-	-	-	-	-	-	
2/4/2014	-	Cloudy	Surface	-	-	-	-	-	-	-	-	-	-	-	-	-	-	-	
	14:50		Middle	2	19.60	19.60	19.6	8.14	8.14	8.1	28.45	28.45	28.5	70.4	70.5	70.5	5.46	5.46	5.46
	-		Bottom	-	-	-	-	-	-	-	-	-	-	-	-	-	-	-	
4/4/2014	-	Fine	Surface	-	-	-	-	-	-	-	-	-	-	-	-	-	-	-	
	14:30		Middle	2	20.70	20.70	20.7	8.10	8.10	8.1	30.10	30.10	30.1	70.1	70.1	70.1	5.25	5.25	5.25
	-		Bottom	-	-	-	-	-	-	-	-	-	-	-	-	-	-	-	
7/4/2014	-	Cloudy	Surface	-	-	-	-	-	-	-	-	-	-	-	-	-	-	-	
	16:00		Middle	2	19.70	19.70	19.7	8.28	8.28	8.3	31.48	31.48	31.5	78.1	75.7	76.9	5.90	5.74	5.82
	-		Bottom	-	-	-	-	-	-	-	-	-	-	-	-	-	-	-	
9/4/2014	-	Fine	Surface	-	-	-	-	-	-	-	-	-	-	-	-	-	-	-	
	19:58		Middle	2	22.80	22.80	22.8	7.77	7.77	7.8	33.84	33.84	33.8	58.2	57.9	58.1	4.12	4.10	4.11
	-		Bottom	-	-	-	-	-	-	-	-	-	-	-	-	-	-	-	
11/4/2014	-	Cloudy	Surface	-	-	-	-	-	-	-	-	-	-	-	-	-	-	-	
	20:15		Middle	2	21.10	21.10	21.1	8.18	8.18	8.2	34.29	34.29	34.3	64.2	63.6	63.9	5.22	5.17	5.20
	-		Bottom	-	-	-	-	-	-	-	-	-	-	-	-	-	-	-	
14/4/2014	-	Cloudy	Surface	-	-	-	-	-	-	-	-	-	-	-	-	-	-	-	
	12:15		Middle	2	21.60	21.60	21.6	8.16	8.16	8.2	30.84	30.84	30.8	62.4	62.1	62.3	4.59	4.57	4.58
	-		Bottom	-	-	-	-	-	-	-	-	-	-	-	-	-	-	-	
16/4/2014	-	Fine	Surface	-	-	-	-	-	-	-	-	-	-	-	-	-	-	-	
	14:00		Middle	2	21.80	21.80	21.8	8.23	8.23	8.2	31.12	31.12	31.1	75.3	75.7	75.5	5.50	5.53	5.52
	-		Bottom	-	-	-	-	-	-	-	-	-	-	-	-	-	-	-	
18/4/2014	-	Sunny	Surface	-	-	-	-	-	-	-	-	-	-	-	-	-	-	-	
	16:34		Middle	1	25.00	25.00	25.0	8.15	8.15	8.2	30.86	30.88	30.9	66.5	66.7	66.6	4.61	4.63	4.62
	-		Bottom	-	-	-	-	-	-	-	-	-	-	-	-	-	-	-	
22/4/2014	-	Fine	Surface	-	-	-	-	-	-	-	-	-	-	-	-	-	-	-	
	16:15		Middle	2	23.30	23.30	23.3	8.09	8.09	8.1	34.73	34.73	34.7	78.6	76.0	77.3	5.50	5.32	5.41
	-		Bottom	-	-	-	-	-	-	-	-	-	-	-	-	-	-	-	
24/4/2014	-	Cloudy	Surface	-	-	-	-	-	-	-	-	-	-	-	-	-	-	-	
	20:02		Middle	1	24.00	24.00	24.0	7.78	7.78	7.8	33.49	33.50	33.5	70.7	70.2	70.5	4.91	4.87	4.89
	-		Bottom	-	-	-	-	-	-	-	-	-	-	-	-	-	-	-	
26/4/2014	-	Cloudy	Surface	-	-	-	-	-	-	-	-	-	-	-	-	-	-	-	
	10:45		Middle	2	22.90	22.90	22.9	8.17	8.17	8.2	35.36	35.36	35.4	75.1	74.3	74.7	5.26	5.21	5.24
	-		Bottom	-	-	-	-	-	-	-	-	-	-	-	-	-	-	-	

Remarks:

Single underline denotes exceedance over Action Level.

Double underline denotes exceedance over Limit Level.

Due to the Amber Rainstorm signal was hoisted on 31 March 2014, water quality monitoring at ebb tide were cancelled



**Water Monitoring Result at Ex-WPCWA SW - South-western corners of ex-Public Cargo Works Area  
Mid-Ebb Tide**

Date	Time	Weather Condition	Sampling Depth	Water Temperature			pH			Salinity			DO Saturation			DO			
				m	°C		-		ppt		%		mg/L						
					Value	Average	Value	Average	Value	Average	Value	Average	Value	Average					
28/3/2014	-	Cloudy	Surface	-	-	-	-	-	-	-	-	-	-	-	-	-	-	-	
	12:02		Middle	1.5	19.90	19.90	19.9	8.01	8.01	8.0	30.42	30.42	30.4	78.7	78.6	78.7	5.96	5.95	5.96
	-		Bottom	-	-	-	-	-	-	-	-	-	-	-	-	-	-	-	-
31/3/2014	-	Amber Rainstorm	Surface	-	-	-	-	-	-	-	-	-	-	-	-	-	-	-	
	-		Middle	-	-	-	-	-	-	-	-	-	-	-	-	-	-	-	
	-		Bottom	-	-	-	-	-	-	-	-	-	-	-	-	-	-	-	
2/4/2014	-	Cloudy	Surface	-	-	-	-	-	-	-	-	-	-	-	-	-	-	-	
	14:47		Middle	1.5	19.20	19.20	19.2	8.12	8.12	8.1	29.62	29.62	29.6	77.7	78.0	77.9	6.01	6.03	6.02
	-		Bottom	-	-	-	-	-	-	-	-	-	-	-	-	-	-	-	
4/4/2014	-	Fine	Surface	-	-	-	-	-	-	-	-	-	-	-	-	-	-	-	
	14:27		Middle	1.5	20.40	20.40	20.4	8.15	8.15	8.2	28.42	28.42	28.4	80.5	80.3	80.4	6.14	6.12	6.13
	-		Bottom	-	-	-	-	-	-	-	-	-	-	-	-	-	-	-	
7/4/2014	-	Cloudy	Surface	-	-	-	-	-	-	-	-	-	-	-	-	-	-	-	
	15:52		Middle	1.5	19.60	19.60	19.6	8.31	8.31	8.3	31.18	31.18	31.2	80.0	80.0	80.0	6.10	6.11	6.11
	-		Bottom	-	-	-	-	-	-	-	-	-	-	-	-	-	-	-	
9/4/2014	-	Fine	Surface	-	-	-	-	-	-	-	-	-	-	-	-	-	-	-	
	21:32		Middle	1.0	22.80	22.80	22.8	8.24	8.24	8.2	22.06	22.06	22.1	23.3	23.8	23.6	1.77	1.80	<u>1.79</u>
	-		Bottom	-	-	-	-	-	-	-	-	-	-	-	-	-	-	-	
11/4/2014	-	Cloudy	Surface	-	-	-	-	-	-	-	-	-	-	-	-	-	-	-	
	21:30		Middle	1.5	20.90	20.90	20.9	8.19	8.19	8.2	23.05	23.05	23.1	13.7	14.1	13.9	1.03	1.06	<u>1.05</u>
	-		Bottom	-	-	-	-	-	-	-	-	-	-	-	-	-	-	-	
14/4/2014	-	Cloudy	Surface	-	-	-	-	-	-	-	-	-	-	-	-	-	-	-	
	12:02		Middle	1.5	21.70	21.70	21.7	8.24	8.24	8.2	28.58	28.58	28.6	62.1	62.0	62.1	4.62	4.61	4.62
	-		Bottom	-	-	-	-	-	-	-	-	-	-	-	-	-	-	-	
16/4/2014	-	Fine	Surface	-	-	-	-	-	-	-	-	-	-	-	-	-	-	-	
	13:52		Middle	1.5	21.80	21.80	21.8	8.27	8.27	8.3	31.19	31.19	31.2	76.2	76.5	76.4	5.57	5.50	5.54
	-		Bottom	-	-	-	-	-	-	-	-	-	-	-	-	-	-	-	
18/4/2014	-	Sunny	Surface	-	-	-	-	-	-	-	-	-	-	-	-	-	-	-	
	15:45		Middle	1.0	25.30	25.30	25.3	8.26	8.26	8.3	22.98	22.98	23.0	20.4	20.9	20.7	1.47	1.54	<u>1.51</u>
	-		Bottom	-	-	-	-	-	-	-	-	-	-	-	-	-	-	-	
22/4/2014	-	Fine	Surface	-	-	-	-	-	-	-	-	-	-	-	-	-	-	-	
	16:12		Middle	1.5	23.00	23.00	23.0	8.10	8.10	8.1	34.55	34.55	34.6	76.2	75.5	75.9	5.35	5.30	5.33
	-		Bottom	-	-	-	-	-	-	-	-	-	-	-	-	-	-	-	
24/4/2014	-	Cloudy	Surface	-	-	-	-	-	-	-	-	-	-	-	-	-	-	-	
	21:15		Middle	1.0	23.90	23.90	23.9	8.26	8.26	8.3	22.01	22.01	22.0	23.9	23.8	23.9	1.78	1.76	<u>1.77</u>
	-		Bottom	-	-	-	-	-	-	-	-	-	-	-	-	-	-	-	
26/4/2014	-	Cloudy	Surface	-	-	-	-	-	-	-	-	-	-	-	-	-	-	-	
	10:37		Middle	1.5	22.60	22.60	22.6	8.18	8.18	8.2	35.01	35.01	35.0	86.3	86.6	86.5	6.07	6.09	6.08
	-		Bottom	-	-	-	-	-	-	-	-	-	-	-	-	-	-	-	

Remarks:

Single underline denotes exceedance over Action Level.

Double underline denotes exceedance over Limit Level.

Due to the Amber Rainstorm signal was hoisted on 31 March 2014, water quality monitoring at ebb tide were cancelled



**Water Monitoring Result at C7 - Windsor House  
Mid-Ebb Tide**

Date	Time	Weather Condition	Sampling Depth		Water Temperature			pH			Salinity			DO Saturation			DO		
					°C			-			ppt			%			mg/L		
			m	Value	Average	Value	Average	Value	Average	Value	Average	Value	Average	Value	Average				
28/3/2014	-	Cloudy	Surface	-	-	-	-	-	-	-	-	-	-	-	-	-	-	-	-
	12:10		Middle	2	19.90	19.90	19.9	7.97	7.97	8.0	31.86	31.86	31.9	52.9	52.8	52.9	3.99	3.98	3.99
	-		Bottom	-	-	-	-	-	-	-	-	-	-	-	-	-	-	-	-
31/3/2014	-	Amber Rainstop	Surface	-	-	-	-	-	-	-	-	-	-	-	-	-	-	-	-
	-		Middle	-	-	-	-	-	-	-	-	-	-	-	-	-	-	-	-
	-		Bottom	-	-	-	-	-	-	-	-	-	-	-	-	-	-	-	-
2/4/2014	-	Cloudy	Surface	-	-	-	-	-	-	-	-	-	-	-	-	-	-	-	-
	14:58		Middle	2	19.50	19.50	19.5	8.07	8.07	8.1	29.19	29.19	29.2	59.7	61.2	60.5	4.60	4.71	4.66
	-		Bottom	-	-	-	-	-	-	-	-	-	-	-	-	-	-	-	-
4/4/2014	-	Fine	Surface	-	-	-	-	-	-	-	-	-	-	-	-	-	-	-	-
	14:35		Middle	2	20.70	20.70	20.7	8.09	8.09	8.1	30.15	30.15	30.2	58.1	58.5	58.3	4.36	4.39	4.38
	-		Bottom	-	-	-	-	-	-	-	-	-	-	-	-	-	-	-	-
7/4/2014	-	Cloudy	Surface	-	-	-	-	-	-	-	-	-	-	-	-	-	-	-	-
	16:10		Middle	2	19.70	19.70	19.7	8.24	8.24	8.2	31.70	31.70	31.7	59.4	60.4	59.9	4.50	4.58	4.54
	-		Bottom	-	-	-	-	-	-	-	-	-	-	-	-	-	-	-	-
9/4/2014	-	Fine	Surface	-	-	-	-	-	-	-	-	-	-	-	-	-	-	-	-
	19:48		Middle	2	22.80	22.60	22.7	7.92	7.92	7.9	34.23	34.23	34.2	50.7	50.9	50.8	3.60	3.61	3.61
	-		Bottom	-	-	-	-	-	-	-	-	-	-	-	-	-	-	-	-
11/4/2014	-	Cloudy	Surface	-	-	-	-	-	-	-	-	-	-	-	-	-	-	-	-
	20:02		Middle	2	20.90	20.90	20.9	7.92	7.92	7.9	33.74	33.74	33.7	50.5	51.8	51.2	3.57	3.69	3.63
	-		Bottom	-	-	-	-	-	-	-	-	-	-	-	-	-	-	-	-
14/4/2014	-	Cloudy	Surface	-	-	-	-	-	-	-	-	-	-	-	-	-	-	-	-
	12:25		Middle	2	21.70	21.70	21.7	8.14	8.14	8.1	31.35	31.35	31.4	57.5	57.2	57.4	4.21	4.17	4.19
	-		Bottom	-	-	-	-	-	-	-	-	-	-	-	-	-	-	-	-
16/4/2014	-	Fine	Surface	-	-	-	-	-	-	-	-	-	-	-	-	-	-	-	-
	14:10		Middle	2	21.90	21.90	21.9	8.27	8.27	8.3	31.11	31.11	31.1	68.1	67.7	67.9	4.98	4.94	4.96
	-		Bottom	-	-	-	-	-	-	-	-	-	-	-	-	-	-	-	-
18/4/2014	-	Sunny	Surface	-	-	-	-	-	-	-	-	-	-	-	-	-	-	-	-
	16:27		Middle	1	25.10	25.10	25.1	7.95	7.95	8.0	30.67	30.67	30.7	62.3	61.8	62.1	4.32	4.28	4.30
	-		Bottom	-	-	-	-	-	-	-	-	-	-	-	-	-	-	-	-
22/4/2014	-	Fine	Surface	-	-	-	-	-	-	-	-	-	-	-	-	-	-	-	-
	16:25		Middle	2	23.30	23.30	23.3	8.07	8.07	8.1	34.77	34.77	34.8	63.6	64.1	63.9	4.45	4.47	4.46
	-		Bottom	-	-	-	-	-	-	-	-	-	-	-	-	-	-	-	-
24/4/2014	-	Cloudy	Surface	-	-	-	-	-	-	-	-	-	-	-	-	-	-	-	-
	19:55		Middle	1	23.80	23.80	23.8	7.93	7.93	7.9	33.66	33.66	33.7	61.8	60.7	61.3	4.30	4.22	4.26
	-		Bottom	-	-	-	-	-	-	-	-	-	-	-	-	-	-	-	-
26/4/2014	-	Cloudy	Surface	-	-	-	-	-	-	-	-	-	-	-	-	-	-	-	-
	10:55		Middle	2	23.30	23.30	23.3	8.18	8.18	8.2	35.09	35.09	35.1	70.3	68.5	69.4	4.90	4.77	4.84
	-		Bottom	-	-	-	-	-	-	-	-	-	-	-	-	-	-	-	-

Remarks:

Single underline denotes exceedance over Action Level.

Double underline denotes exceedance over Limit Level.

Due to the Amber Rainstop signal was hoisted on 31 March 2014, water quality monitoring at ebb tide were cancelled



**Water Monitoring Result at Ex-WPCWA SE - South-eastern corners of ex-Public Cargo Works Area  
Mid-Ebb Tide**

Date	Time	Weather Condition	Sampling Depth		Water Temperature			pH			Salinity		DO Saturation		DO				
					°C			-		ppt		%		mg/L					
			m	Value	Average	Value	Average	Value	Average	Value	Average	Value	Average						
28/3/2014	-	Cloudy	Surface	-	-	-	-	-	-	-	-	-	-	-	-	-	-		
	12:00		Middle	1.5	20.50	20.50	20.5	8.10	8.10	8.1	23.08	23.08	23.1	77.2	76.6	76.9	6.03	5.96	6.00
	-		Bottom	-	-	-	-	-	-	-	-	-	-	-	-	-	-	-	-
31/3/2014	-	Amber Rainstorm	Surface	-	-	-	-	-	-	-	-	-	-	-	-	-	-	-	
	-		Middle	-	-	-	-	-	-	-	-	-	-	-	-	-	-	-	
	-		Bottom	-	-	-	-	-	-	-	-	-	-	-	-	-	-	-	
2/4/2014	-	Cloudy	Surface	-	-	-	-	-	-	-	-	-	-	-	-	-	-	-	
	14:45		Middle	1.5	19.40	19.40	19.4	8.26	8.26	8.3	23.17	23.17	23.2	75.9	76.3	76.1	6.10	6.12	6.11
	-		Bottom	-	-	-	-	-	-	-	-	-	-	-	-	-	-	-	-
4/4/2014	-	Fine	Surface	-	-	-	-	-	-	-	-	-	-	-	-	-	-	-	
	14:25		Middle	1.5	20.50	20.50	20.5	8.17	8.17	8.2	29.54	29.54	29.5	66.2	66.3	66.3	5.00	5.01	5.01
	-		Bottom	-	-	-	-	-	-	-	-	-	-	-	-	-	-	-	-
7/4/2014	-	Cloudy	Surface	-	-	-	-	-	-	-	-	-	-	-	-	-	-	-	
	15:50		Middle	1.5	19.60	19.60	19.6	8.31	8.31	8.3	31.94	31.94	31.9	79.6	79.9	79.8	6.03	6.06	6.05
	-		Bottom	-	-	-	-	-	-	-	-	-	-	-	-	-	-	-	-
9/4/2014	-	Fine	Surface	-	-	-	-	-	-	-	-	-	-	-	-	-	-	-	
	21:37		Middle	1.0	22.90	22.90	22.9	8.00	8.00	8.0	21.65	21.67	21.7	24.5	24.3	24.4	1.86	1.84	<u>1.85</u>
	-		Bottom	-	-	-	-	-	-	-	-	-	-	-	-	-	-	-	-
11/4/2014	-	Cloudy	Surface	-	-	-	-	-	-	-	-	-	-	-	-	-	-	-	
	21:36		Middle	1.5	20.90	20.90	20.9	8.08	8.07	8.1	25.78	25.70	25.7	14.2	13.7	14.0	1.08	1.03	<u>1.06</u>
	-		Bottom	-	-	-	-	-	-	-	-	-	-	-	-	-	-	-	-
14/4/2014	-	Cloudy	Surface	-	-	-	-	-	-	-	-	-	-	-	-	-	-	-	
	12:00		Middle	1.5	21.60	21.60	21.6	8.28	8.28	8.3	28.78	28.78	28.8	63.5	62.9	63.2	4.71	4.68	4.70
	-		Bottom	-	-	-	-	-	-	-	-	-	-	-	-	-	-	-	-
16/4/2014	-	Fine	Surface	-	-	-	-	-	-	-	-	-	-	-	-	-	-	-	
	13:50		Middle	1.5	22.20	22.20	22.2	8.30	8.30	8.3	31.03	31.03	31.0	71.7	72.0	71.9	5.23	5.25	5.24
	-		Bottom	-	-	-	-	-	-	-	-	-	-	-	-	-	-	-	-
18/4/2014	-	Sunny	Surface	-	-	-	-	-	-	-	-	-	-	-	-	-	-	-	
	15:51		Middle	1.0	25.40	25.40	25.4	7.98	7.98	8.0	22.70	22.70	22.7	20.0	20.0	20.0	1.44	1.44	<u>1.44</u>
	-		Bottom	-	-	-	-	-	-	-	-	-	-	-	-	-	-	-	-
22/4/2014	-	Fine	Surface	-	-	-	-	-	-	-	-	-	-	-	-	-	-	-	
	16:10		Middle	1.5	23.50	23.50	23.5	8.14	8.14	8.1	33.43	33.43	33.4	83.9	81.7	82.8	5.83	5.72	5.78
	-		Bottom	-	-	-	-	-	-	-	-	-	-	-	-	-	-	-	-
24/4/2014	-	Cloudy	Surface	-	-	-	-	-	-	-	-	-	-	-	-	-	-	-	
	21:22		Middle	1.0	25.70	25.70	25.7	8.02	8.02	8.0	22.11	22.11	22.1	27.5	27.8	27.7	2.04	2.06	<u>2.05</u>
	-		Bottom	-	-	-	-	-	-	-	-	-	-	-	-	-	-	-	-
26/4/2014	-	Cloudy	Surface	-	-	-	-	-	-	-	-	-	-	-	-	-	-	-	
	10:35		Middle	1.5	22.90	22.90	22.9	8.19	8.19	8.2	35.12	35.12	35.1	86.5	82.8	84.7	6.18	5.82	6.00
	-		Bottom	-	-	-	-	-	-	-	-	-	-	-	-	-	-	-	-

Remarks:

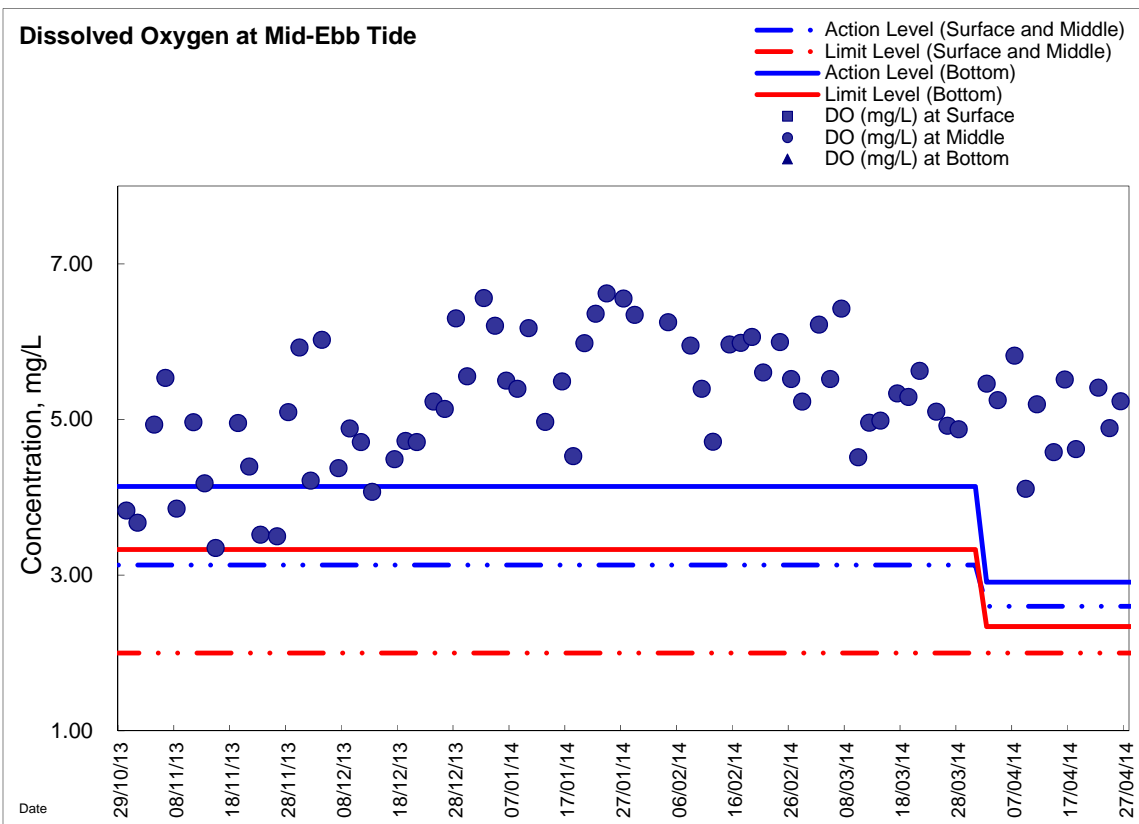
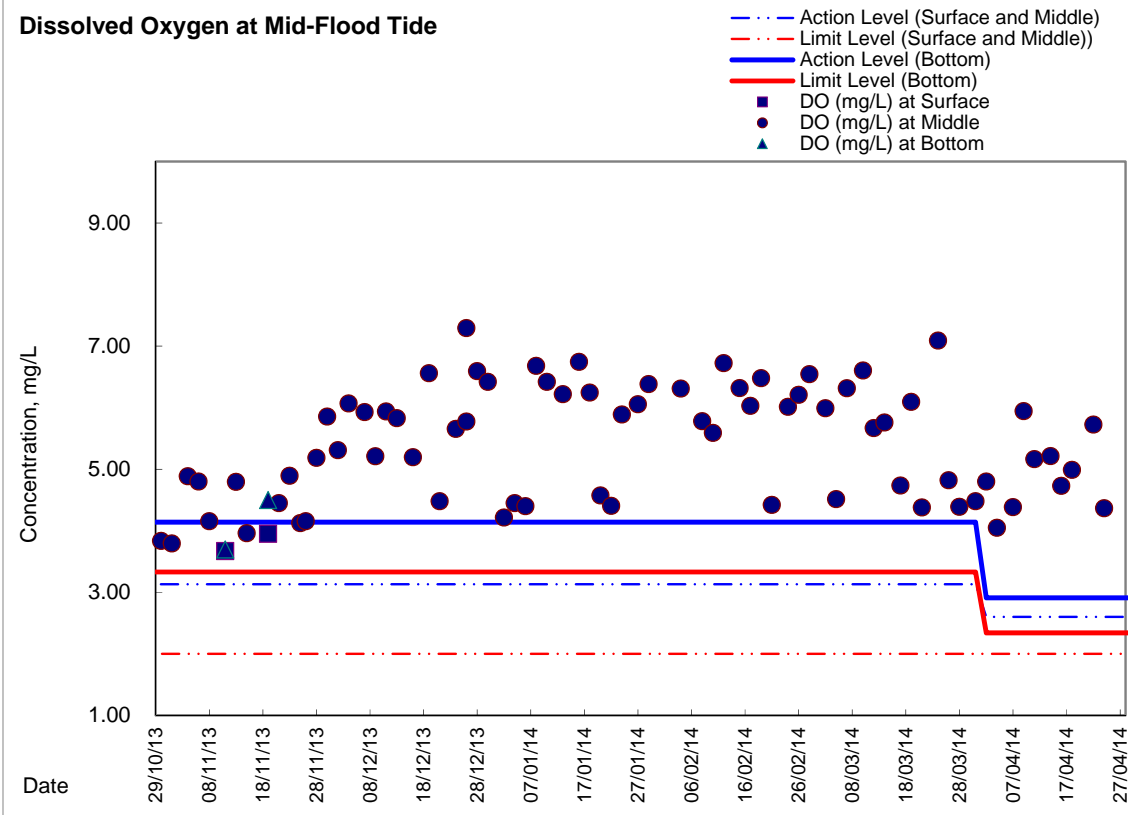
Single underline denotes exceedance over Action Level.

Double underline denotes exceedance over Limit Level.

Due to the Amber Rainstorm signal was hoisted on 31 March 2014, water quality monitoring at ebb tide were cancelled

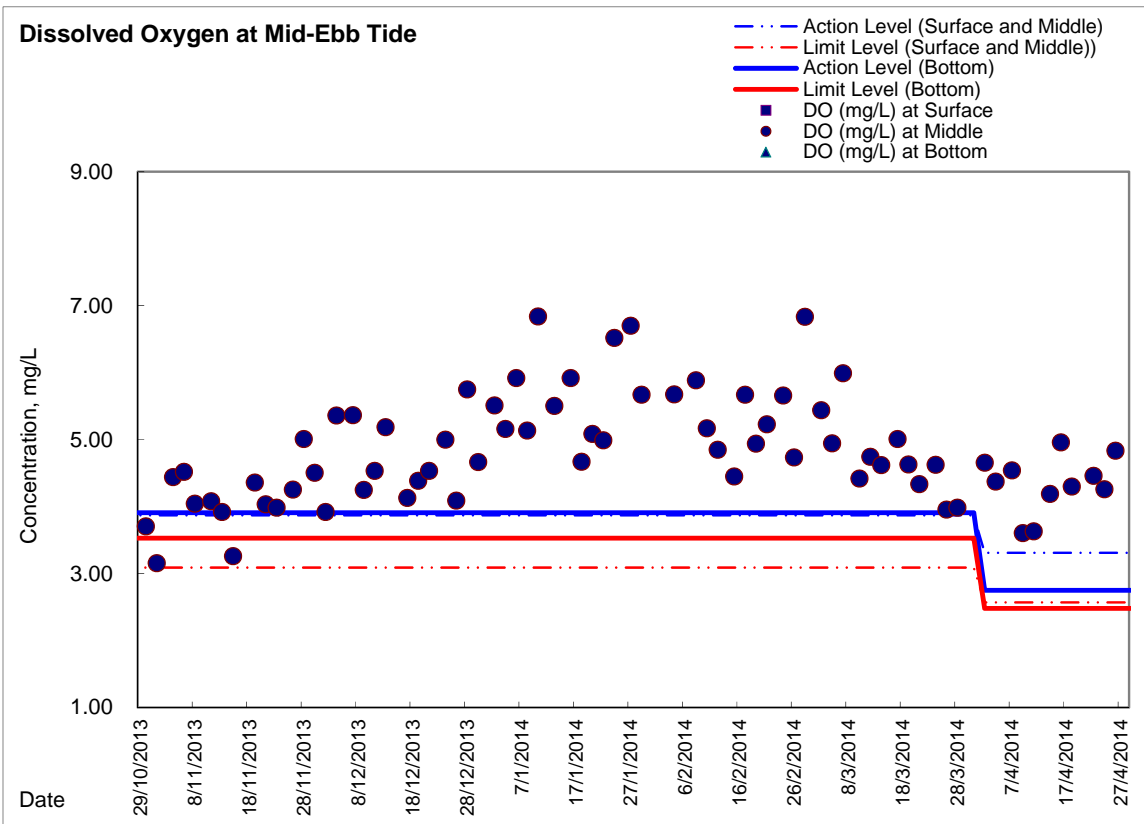
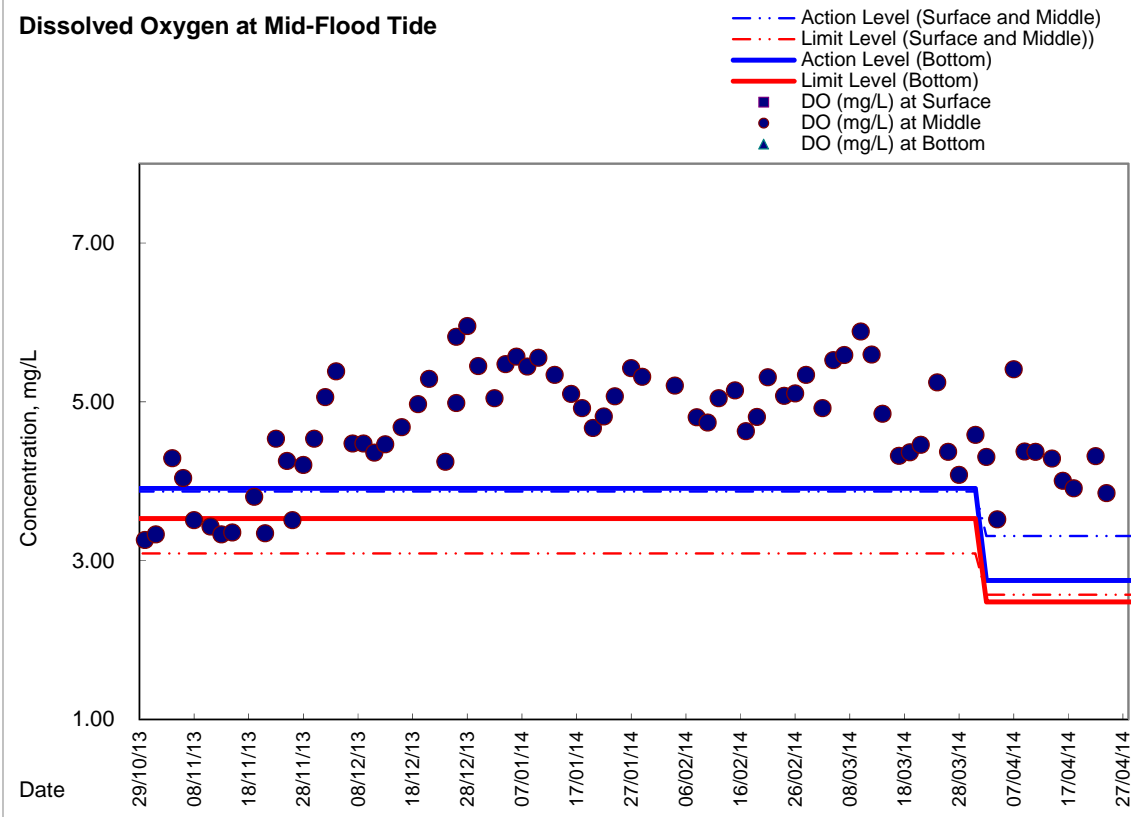


### Graphic Presentation of Enhanced Water Monitoring Results (DO) at C6 - Excelsior Hotel





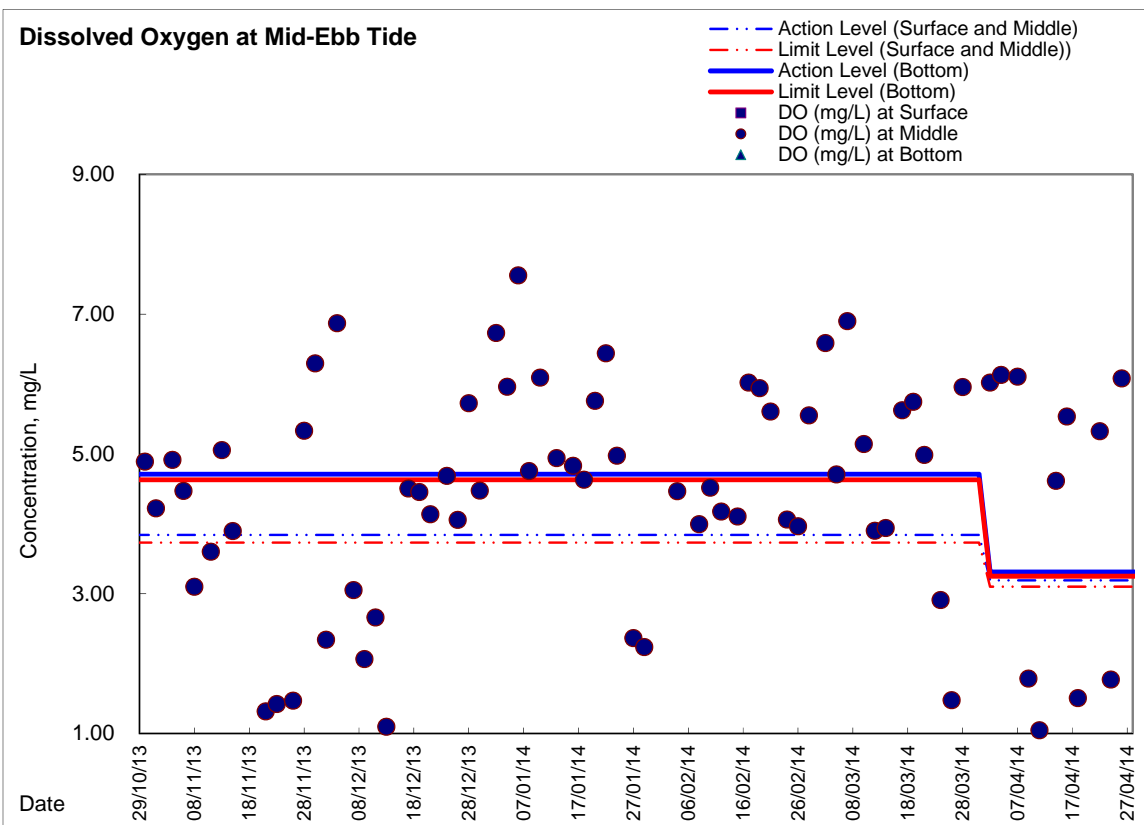
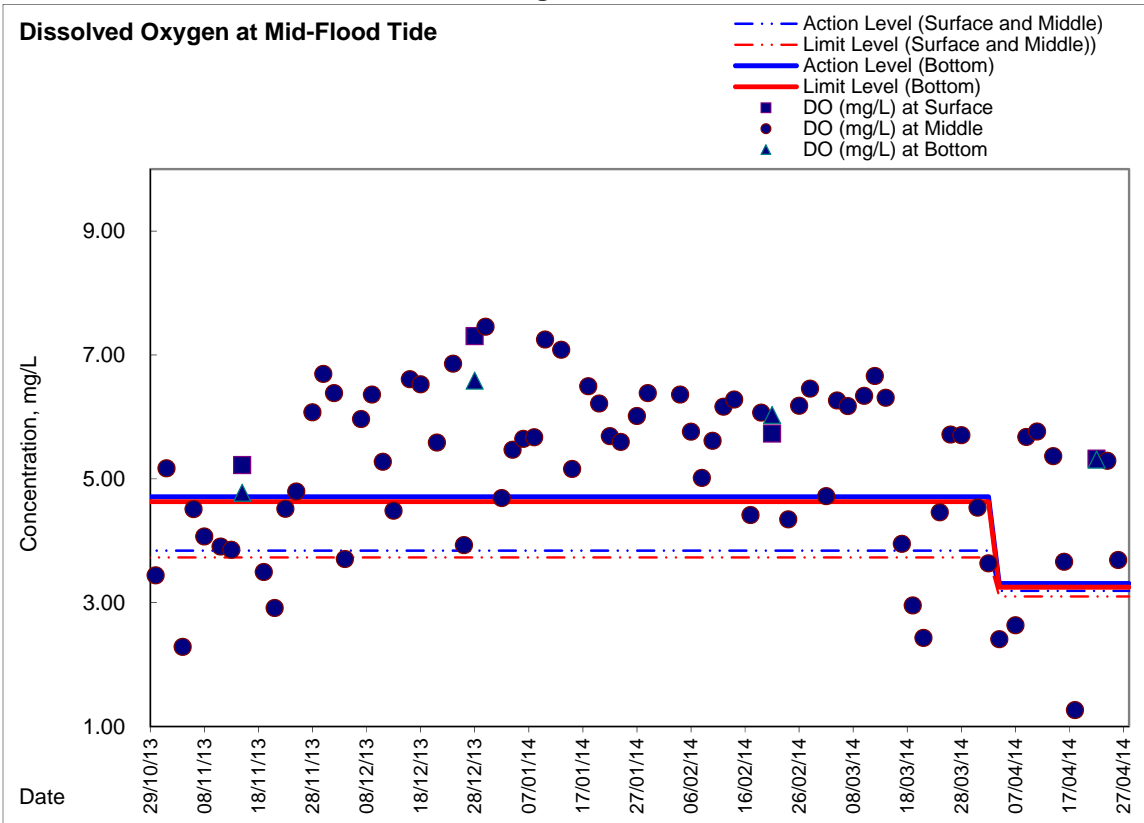
### Graphic Presentation of Enhanced Water Monitoring Results (DO) at C7 - Windsor House







### Graphic Presentation of Enhanced Water Monitoring Results (DO) at Ex-WPCWA SW - South-western corners of ex-Public Cargo Works Area





### Graphic Presentation of Enhanced Water Monitoring Results (DO) at Ex-WPCWA SE - South-eastern corners of ex-Public Cargo Works Area

